

SANTA ROSA SCHOOLS

2018 Annual Assessment

Key Events in 2018

- 590 additional students
- 1,734 new residential units



State of Housing Report

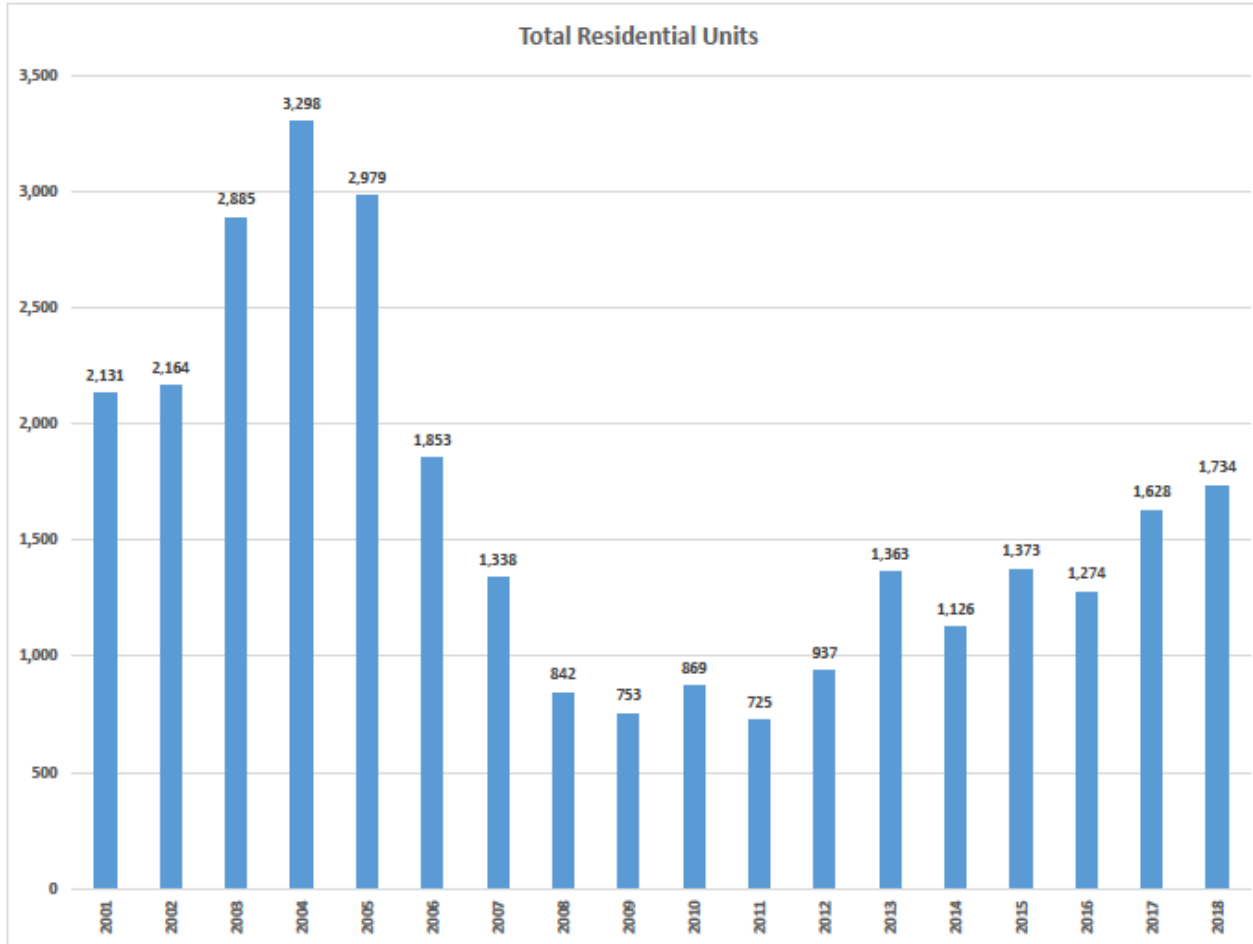
Home Builders Association of West Florida

May 2017

- BEBR Forecast for Santa Rosa County
 - 30,000 new residents (2017 – 2025)
 - 1.9% annual growth rate
 - Average of 1,500 new residential units per year
-

2018 BEBR Forecast

- 2018 Population Estimate: 174,887
 - 2025 Population Projection: 199,930
 - 1.9% Annual Growth Rate through 2025
 - 2030 Population Projection: 215,500
 - 1.8% Annual Growth Rate through 2030
-

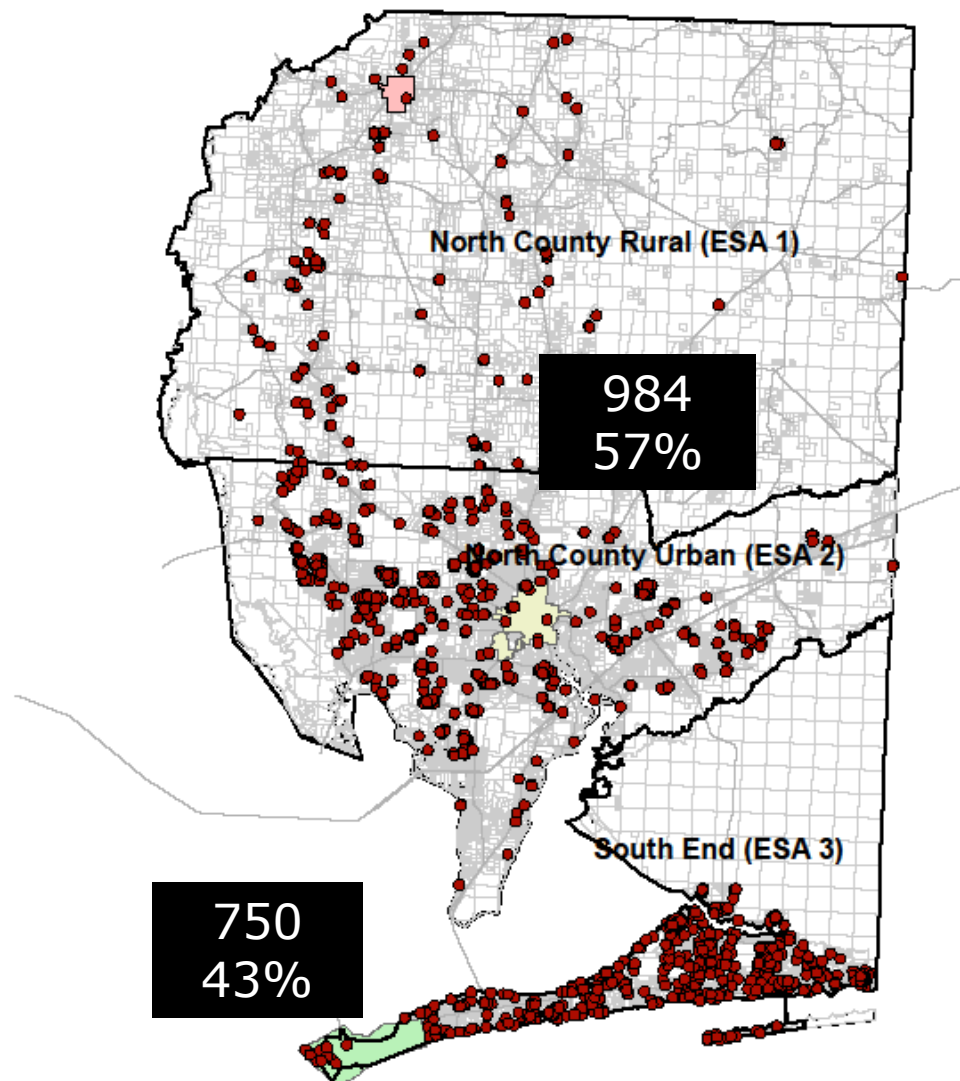


Annualized Growth Rate 2000 - 2007
4.6%

Annualized Growth Rate 2008 - 2012
1.2%

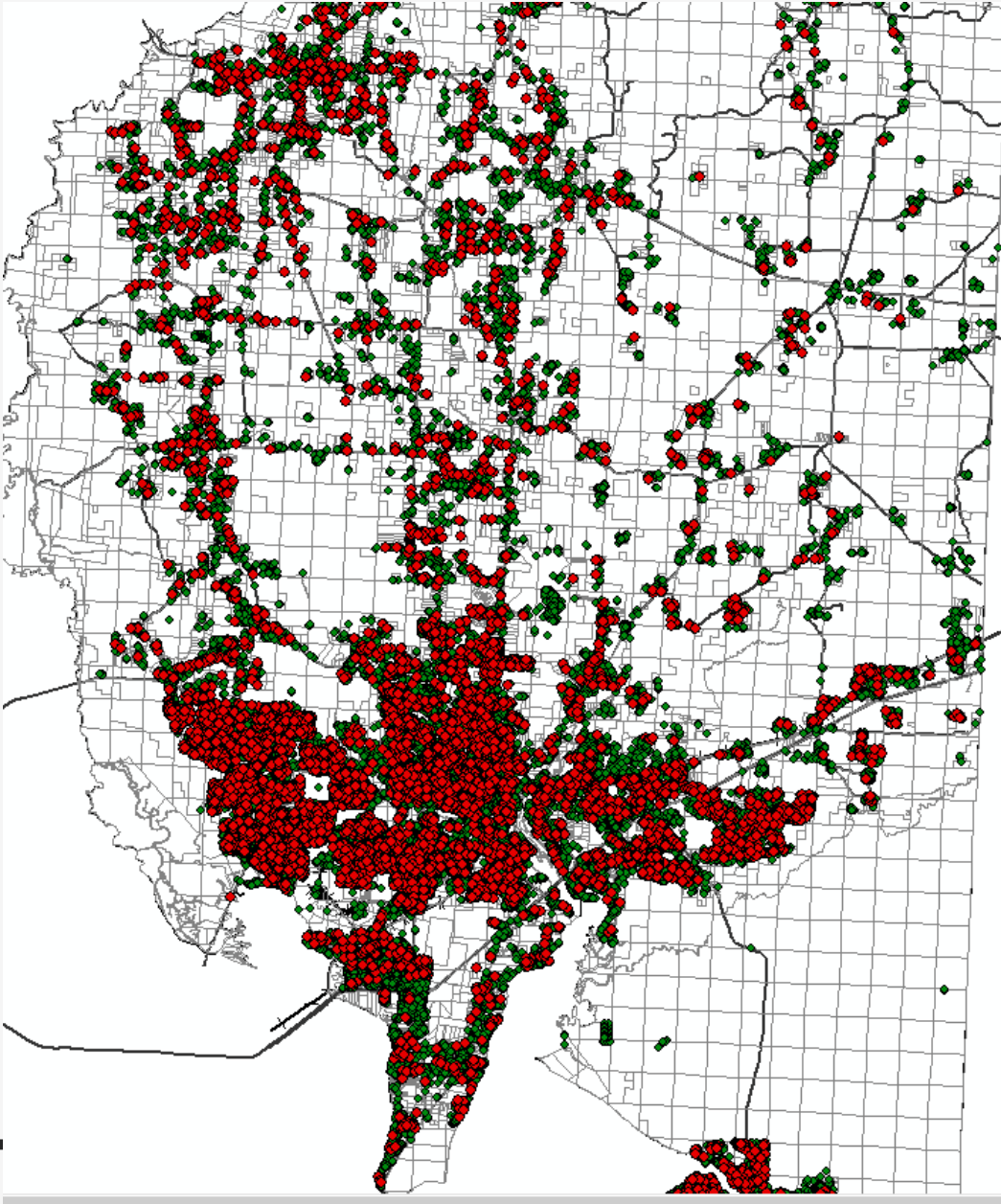
Annualized Growth Rate 2013-2017
2.1%

2018 Growth Rate
2.4%



2018 Residential Development

**1,734 Single Family /
Mobile Homes**



North County

100 Single Family

17 ELEM

9 MIDDLE

11 HIGH

100 Multi Family

13 ELEM

5 MIDDLE

5 HIGH



South End

100 Single Family

100 Multi Family

18 ELEM

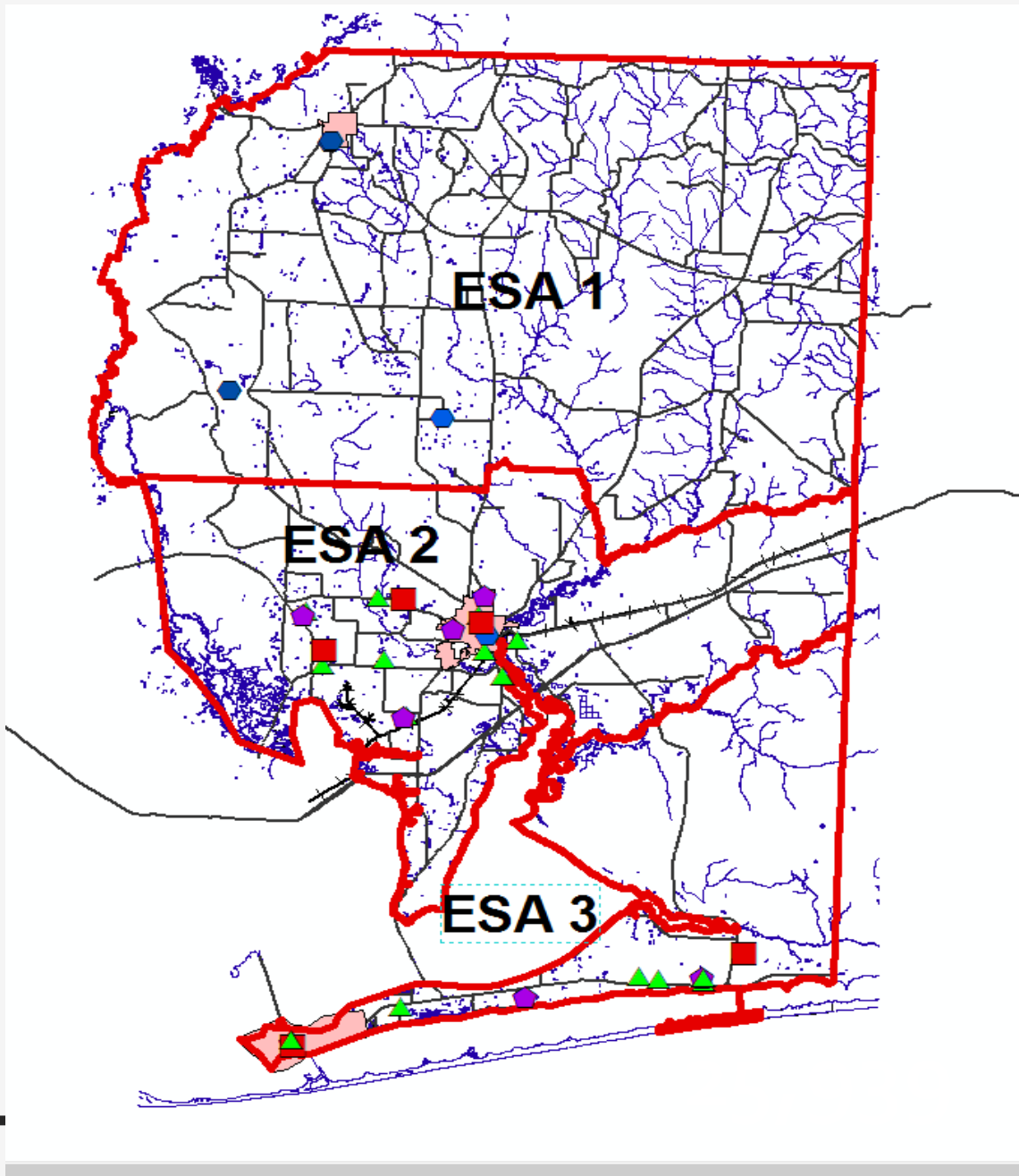
10 MIDDLE

13 HIGH

6 ELEM

3 MIDDLE

4 HIGH

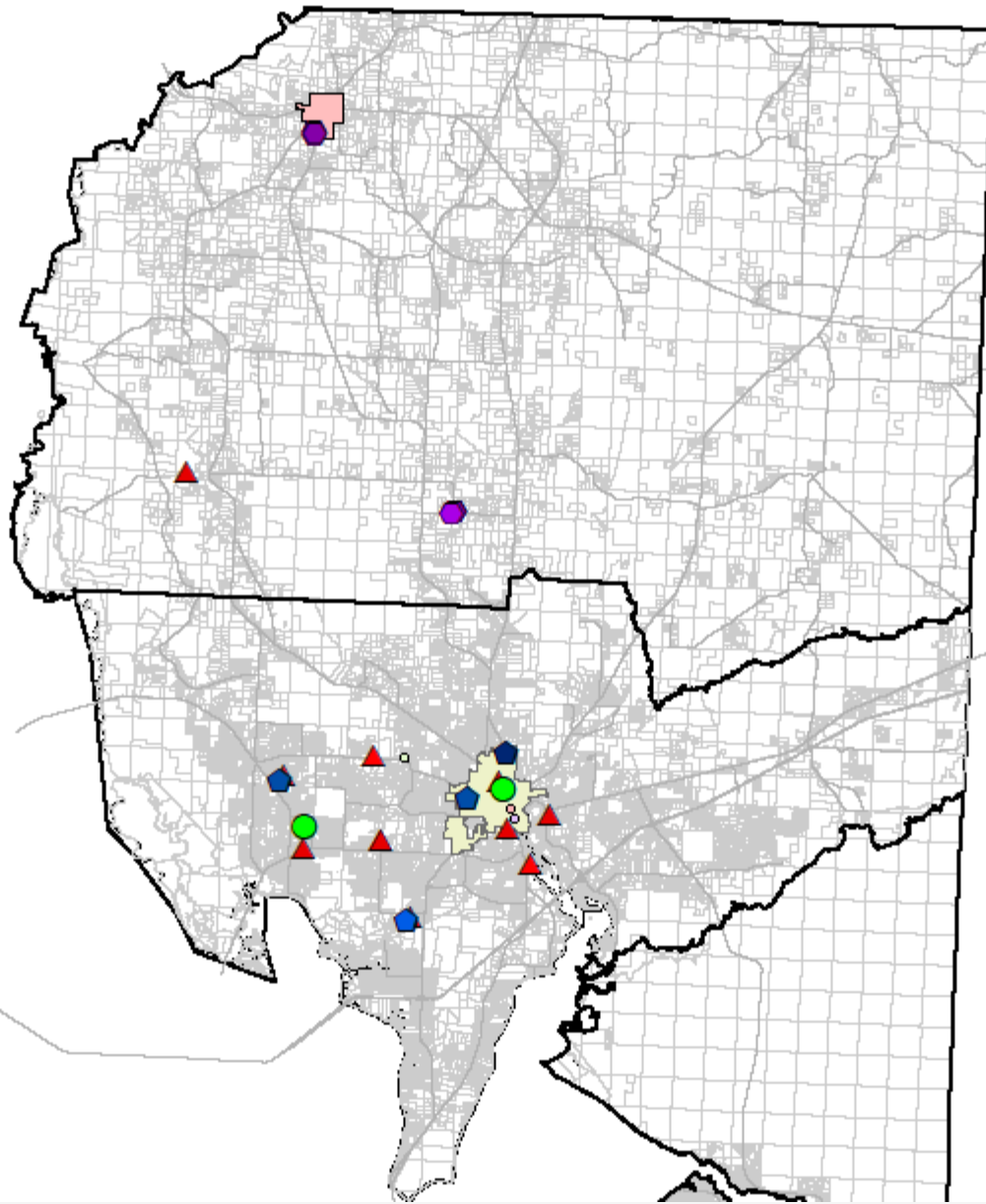


NORTH	CAPACITY	ENROLLMENT	% USE
ELEMENTARY	8,805	7,439	84%
MIDDLE	4,405	3,721	84%
HIGH	5,078	4,305	85%
TOTAL	18,288	15,465	85%

SOUTH	CAPACITY	ENROLLMENT	% USE
ELEMENTARY	5,789	5,491	95%
MIDDLE	3,218	3,075	96%
HIGH	4,114	4,096	100%
TOTAL	13,121	12,622	96%

TOTAL	CAPACITY	ENROLLMENT	% USE
ELEMENTARY	14,594	12,930	89%
MIDDLE	7,623	6,796	89%
HIGH	9,192	8,401	91%
TOTAL	31,409	28,127	90%

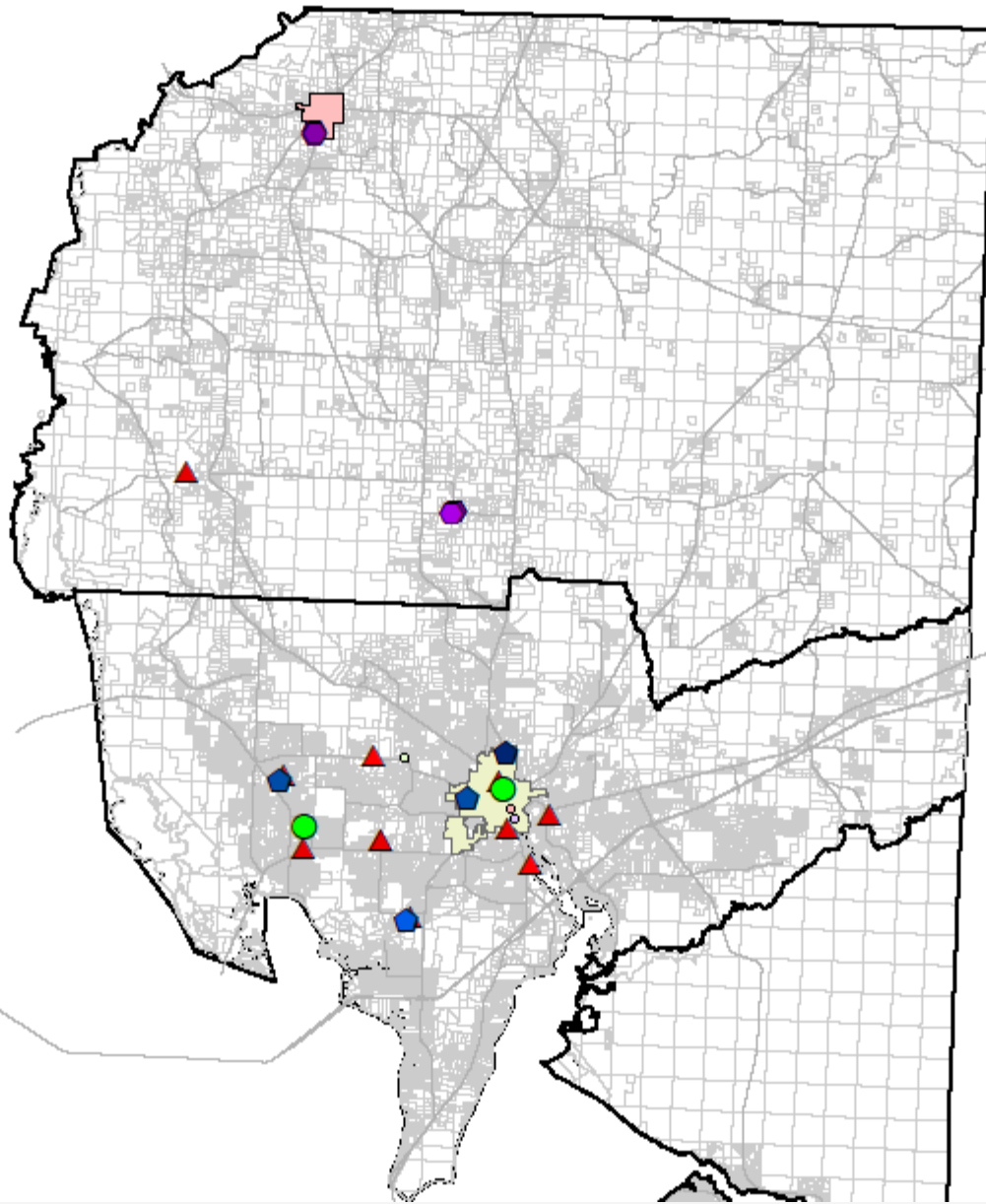
January 10, 2019 Student Count



NORTH COUNTY

Profile

- **9 Elementary Schools (includes TRJ)**
 - **4 Middle Schools**
 - **2 High Schools**
 - **4 Combination Schools**
-
- **8,805 Elementary Student Stations**
 - **4,405 Middle Student Stations**
 - **5,078 High Student Stations**

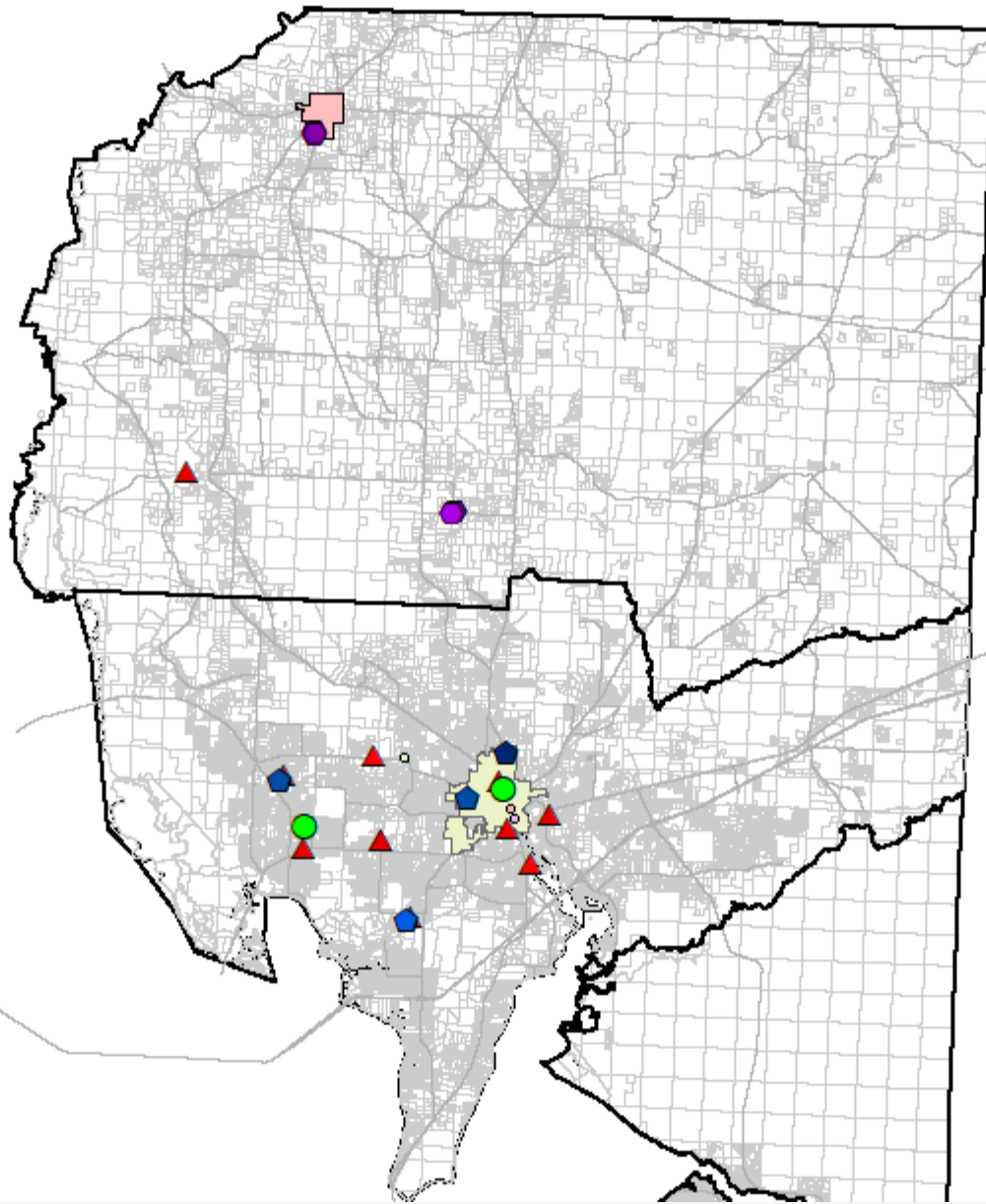


NORTH COUNTY

What happened in 2018?

- **74 new elementary students**
- **123 new middle students**
- **56 new high students**

Actual Count
January 2018 – January 2019



The next 5 years?

2.0% annual growth – urban

1.4% annual growth - rural

- **718 new elementary students**
- **364 new middle students**
- **418 new high students**
- **No new capacity needed**
- **Redistricting Required**

The next 10 years?

- **1,527 new elementary students**
- **771 new middle students**
- **900 new high students**
- **New elementary needed**
- **New middle needed**
- **New high needed**
- **Redistricting Required**



South End

Profile

- **6 Elementary Schools**
 - **3 Middle Schools**
 - **2 High Schools**
-
- **5,789 Elementary Student Stations**
 - **3,218 Middle Student Stations**
 - **4,114 High Student Stations**



South End

What happened in 2018?

- 108 new elementary students
- 50 new middle students
- 179 new high students

Actual Count
January 2018 – January 2019



South End

The next 10 years?

- 1,122 new elementary students
- 771 new middle students
- 900 new high students
- New high school needed
- Redistricting Required

The next 5 years?

- 2.0% annual growth rate
- 507 new elementary students
- 314 new middle students
- 427 new high students
- Redistricting Required

New K-8 School

- 705 elementary student stations
- 477 middle student stations
- Redistricting Required