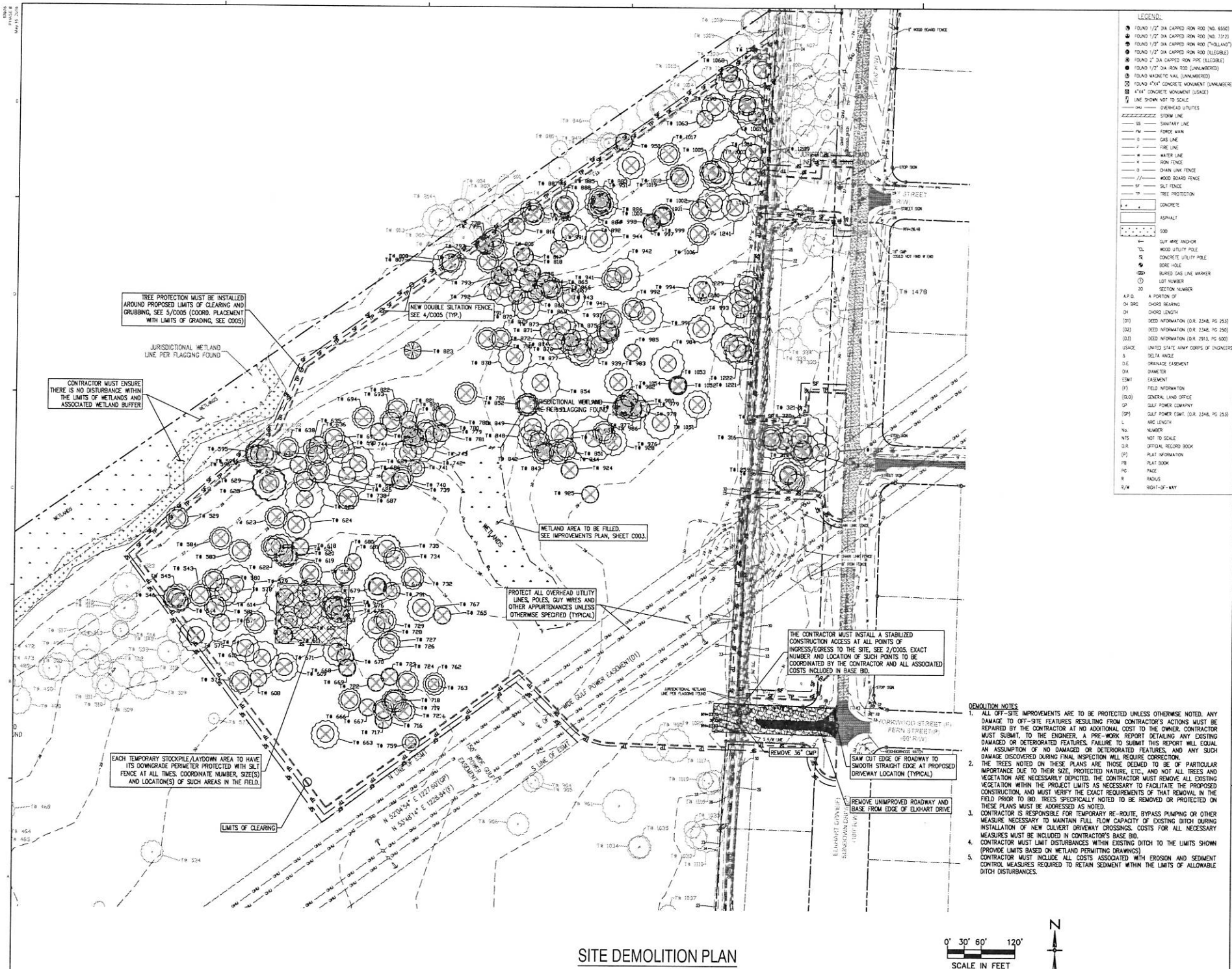


CIVIL NOTES & INFORMATION



dag

DAG ARCHITECTS INC.
40 SOUTH PALAFOX PLACE - STE 201
PENSACOLA, FL 32502
T: 850-429-9004
FLB AA-C097745
www.dagarchitects.com

SITE PACKAGE



SANTA ROSA COUNTY SCHOOL DISTRICT
ELKHART DRIVE K-8 SCHOOL

2535 ELKHART DRIVE, GULF BREEZE, FL 32563

NOT FOR
CONSTRUCTION



D. PATRICK JEHLE, JR.
P.E. 71528

[illegible]

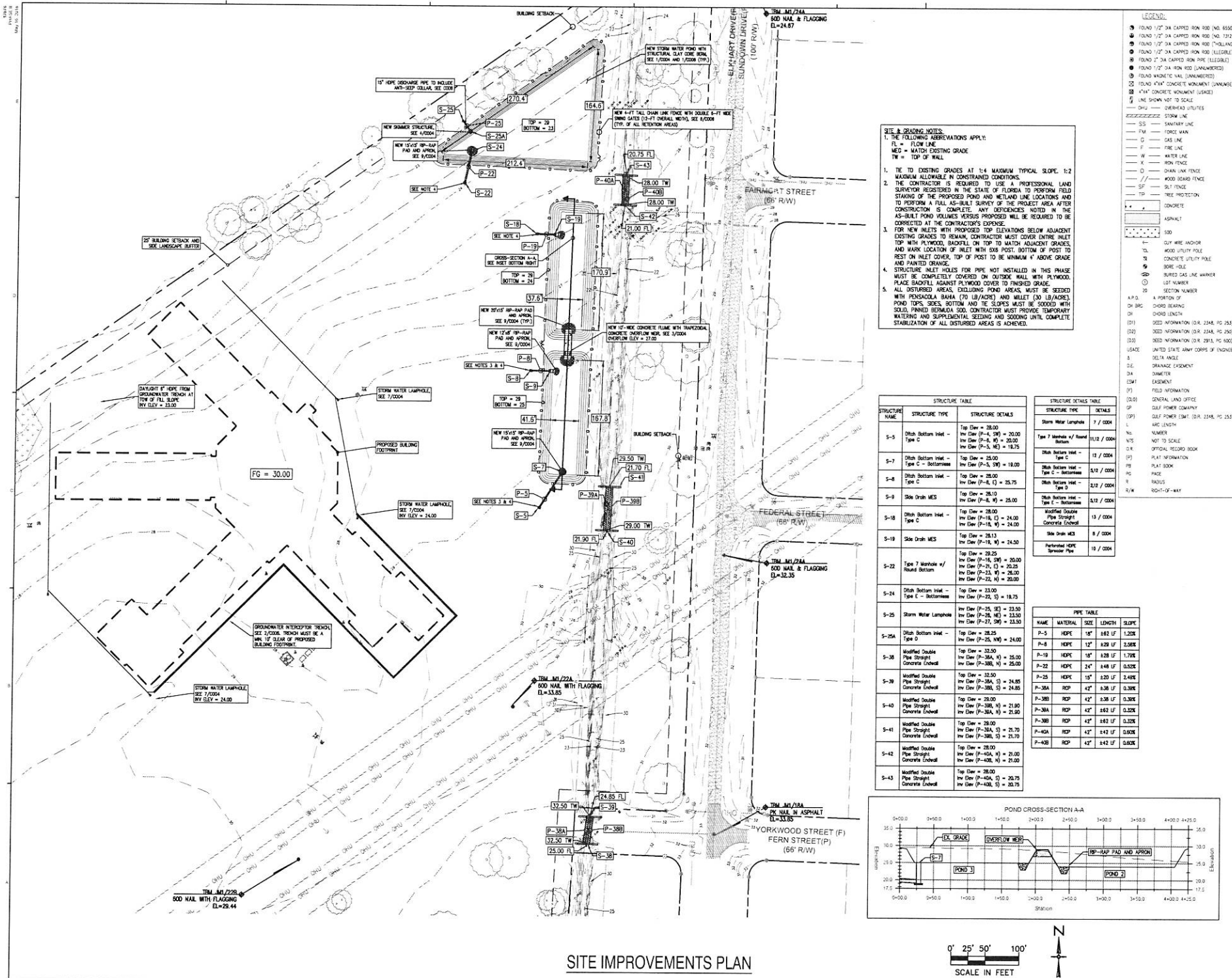
SITE DEMOLITION PLAN

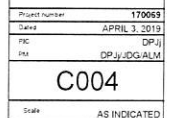
| | |
|----------------|--------|
| Project number | 170069 |
|----------------|--------|

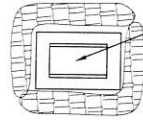
| | |
|------|---------------|
| Date | APRIL 3, 2019 |
| PC | DPJj |
| PM | DPJj/JDG/ALM |

C002

Scale AS INDICATED

[illegible]

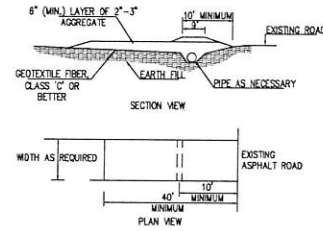




NOTE:
SYNTHETIC BALES OR SEDIMENT LOG WILL BE PLACED AT COMMENCEMENT OF CONSTRUCTION OR IMMEDIATELY AFTER INSTALLATION AND MAINTAINED THROUGHOUT PROJECT COMPLETION AND STABILIZATION.

STORM WATER INLET PROTECTION 1

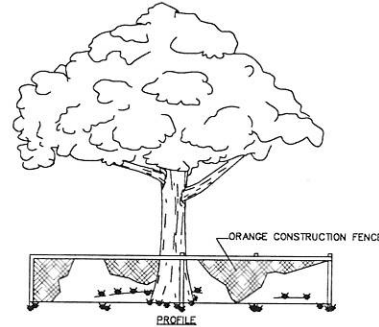
NOT TO SCALE



NOTES:
1. CONSTRUCTION ENTRANCES PROVIDE AN AREA WHERE MUD CAN BE REMOVED FROM VEHICLE TIRES BEFORE THEY LEAVE THE CONSTRUCTION SITE. THE MOTION OF THE VEHICLE AS IT MOVES OVER THE GRAVEL CONSTRUCTION MATERIAL DISCLOSES CAKED MUD.
2. IF THE ACTION OF THE VEHICLE ON THE GRAVEL PAD IS NOT SUFFICIENT TO DISCLOSE MUD, THEN THE TIRES MUST BE WASHED BEFORE THE VEHICLE LEAVES THE SITE.
3. UTILIZE GRAVEL, 2" - 3" (MIN.) IN DIAMETER. GRAVEL LAYER SHOULD BE AT LEAST 6" THICK. THE PAD SHOULD BE AT LEAST 50' LONG. WIDTH SHOULD BE APPROPRIATE TO VEHICLE SIZE.

ROCK CONSTRUCTION ACCESS 2

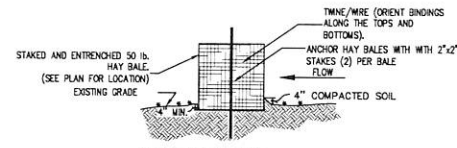
NOT TO SCALE



NOTES:
1. FOR TEMPORARY USE DURING CONSTRUCTION, BARRICADE SHALL BE PLACED PRIOR TO ANY LAND DISTURBANCE.
2. FENCE MATERIAL SHALL BE PLACED AT THE DRIP LINE OF THE TREE OR GROUP OF TREES TO BE PROTECTED.
3. NONE OF THE FOLLOWING ACTIVITIES SHALL OCCUR WITHIN THE TREE PROTECTION BARRICADE: DRIVING, PARKING, STORING MATERIALS, DUMPING WASTE, CONCRETE WASHOUT, ADDING FILL SOIL, TRENCHING, REMOVING SOIL OR GRUBBING.

TREE PROTECTION 3

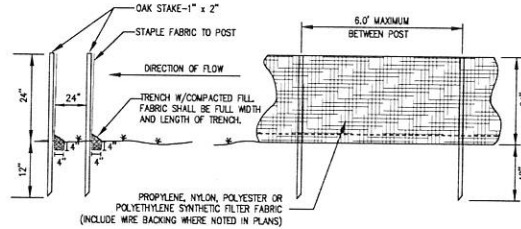
NOT TO SCALE



CONSTRUCTION SPECIFICATION
BALES WILL BE PLACED IN A SINGLE ROW, LENGTHWISE ON THE CONTOUR, WITH ENDS OF ADJACENT BALES TIGHTLY ABUTTING EACH OTHER. ALL BALES WILL BE EITHER WIRE-BOUND OR STRING-TIED. THE BARRIER WILL BE ENTRENCHED AND BACKFILLED. THE FIRST STAKE IN EACH BALE WILL BE DRIVEN TOWARD THE PREVIOUSLY LAID BALE TO FORCE THE BALES TOGETHER. THE GAPS BETWEEN BALES MUST BE CHINKED (FILLED BY WEDGING) WITH STRAW.

HAYBALE INSTALLATION 3

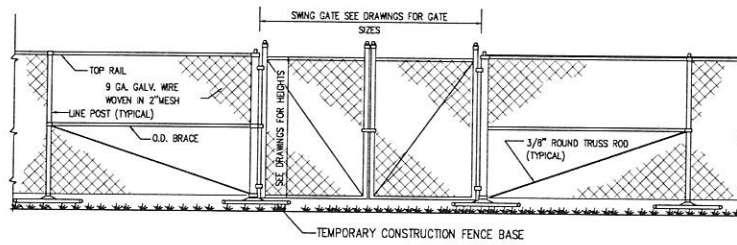
NOT TO SCALE



FENCE SECTION FENCE ELEVATION

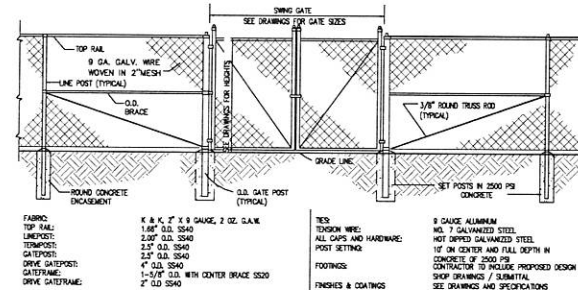
SILTATION FENCE 4

NOT TO SCALE



TEMPORARY CHAIN LINK FENCE AND GATES 5

NOT TO SCALE



CHAIN LINK FENCE AND GATES 6

NOT TO SCALE

NOTES:
1. SEE WRITTEN SPECIFICATIONS FOR FULL DETAILS.
2. PLACE SOD BEGINNING AT THE TOP OF THE SLOPE AND LONG EDGE PERPENDICULAR TO DIRECTION OF FLOW.
3. SOD SHALL BE PINNED IN ALL SLOPES 4:1 OR STEEPER, IN AREAS OF CONCENTRATED DRAINAGE FLOW, AND ANYWHERE THAT THERE IS DANGER OF SOD SLIPPING.
4. INSTALL SOD EDGES FLUSH WITH FINISHED GRADE OR ADJOINING SOD.

SODDING DETAIL 6

NOT TO SCALE



DAG ARCHITECTS INC.
45 SOUTH PALM AVE. STE. 201
TAMPA, FL 33602
T: 813-442-9004
F: 813-442-9004
www.dagarchitects.com

SITE PACKAGE



SANTA ROSA COUNTY SCHOOL DISTRICT
ELKHART DRIVE K-8 SCHOOL

2635 ELKHART DRIVE GULF BREEZE, FL 32563

NOT FOR CONSTRUCTION



| REVISIONS: | | |
|------------|-------------|------|
| No. | Description | Date |
| | | |
| | | |
| | | |
| | | |
| | | |
| | | |
| | | |
| | | |
| | | |

SITE EROSION CONTROL DETAILS

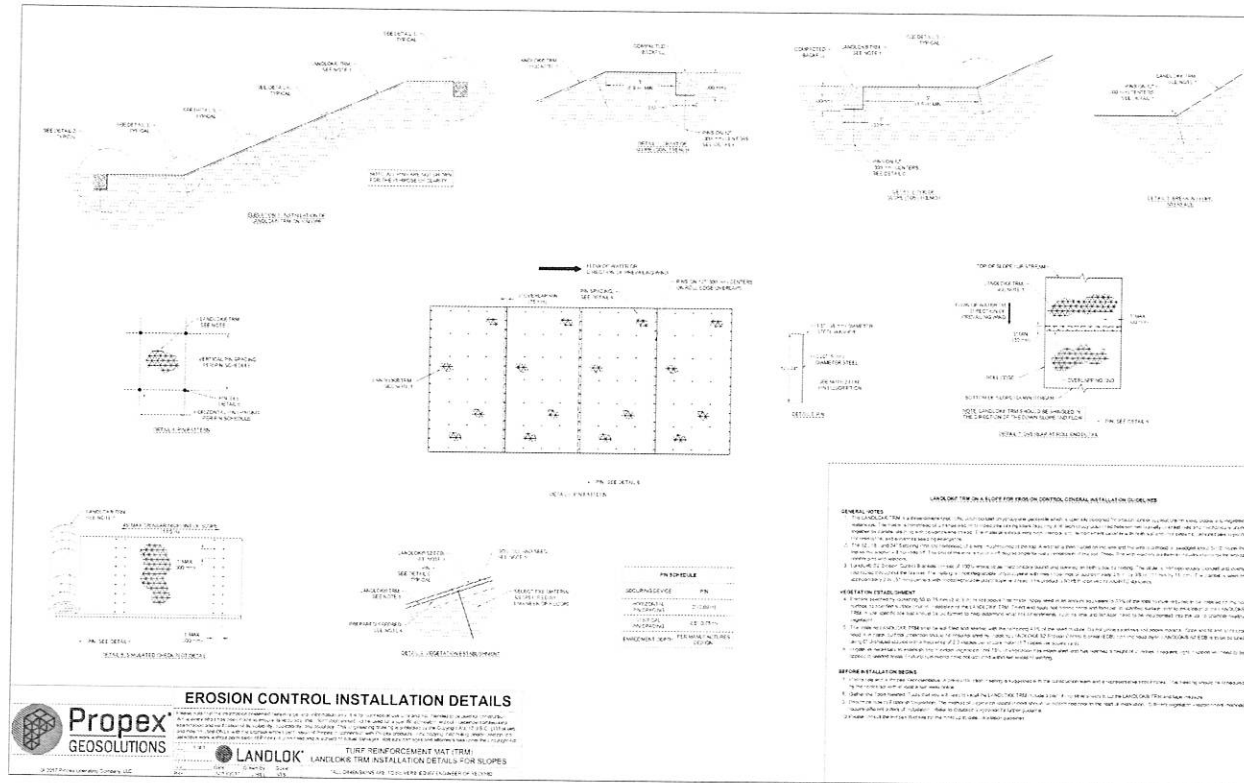
Project Number: 170069
Date: APRIL 3, 2013
PK: DPJ
PWA: DPJ/JDG/ALM

C005

Scale: AS INDICATED

SITE EROSION CONTROL DETAILS

11/20/2018
11/20/2018
11/20/2018



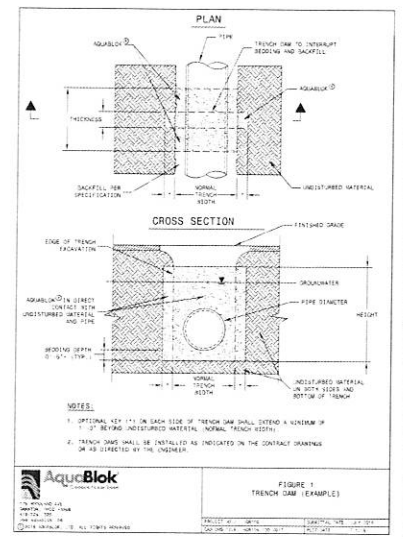
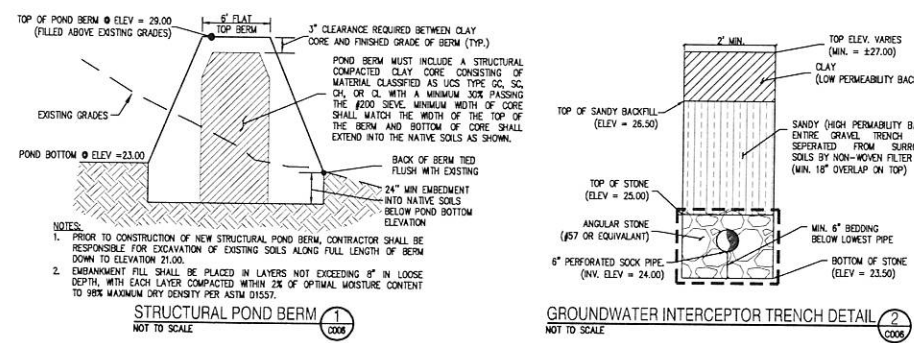
LANDLOK®

Product Data
LANDLOK® S1 EGB

LANDLOK® S1 erosion control blanket (ECB) consists of 100% wheat straw mechanically bound and covered on one side by netting. The straw is homogeneously banded and evenly distributed throughout the blanket. The netting is photodegradable polypropylene with mesh openings of approximately 3/8 in by 3/8 in (12 mm by 12 mm). The blanket is sewn on approximately 2 in (51 mm) centers with photodegradable polypropylene thread.

LANDLOK® S1 performs as the property values listed below:

| PROPERTY | TEST METHOD | ENGLISH | METRIC |
|--------------------|-------------|--------------|---------------------------|
| PHYSICAL | | | |
| Mass (incl. straw) | ASTM D-5675 | 8.0 lb/sq yd | 271 g/m ² |
| Thickness | ASTM D-5675 | 6.0 in | 152 mm |
| Mechanical | | | |
| Tensile Strength | ASTM D-6611 | 100 lb/6 in | 1.6 x 10 ⁴ N/m |
| Elongation | ASTM D-6611 | 100% | 100% |
| UV Resistance | ASTM D-6611 | 100% | 100% |
| Biodegradability | ASTM D-6611 | 100% | 100% |



EROSION CONTROL MAT DETAILS

dag

DAG ARCHITECTS INC.
45 SOUTH PALMFOX PLACE - STE 201
PENSACOLA, FL 32502
TEL: 904-293-0004
FAX: 904-293-0045
WWW.DAGARCHITECTS.COM

SITE PACKAGE

**SANTA ROSA COUNTY SCHOOL DISTRICT
ELKHART DRIVE K-8 SCHOOL**

2535 ELKHART DRIVE, GULF BREEZE, FL 32563

NOT FOR CONSTRUCTION

EROSION CONTROL MAT DETAILS

Project number: 170069
Date: APRIL 3, 2019
PIC: DPJJ
PRA: DPJJ/JG/ALM
C006
Scale: AS INDICATED