

SANTA ROSA SCHOOLS

2018 Annual Assessment

Key Events in 2018

- 590 additional students
- 1,734 new residential units



State of Housing Report

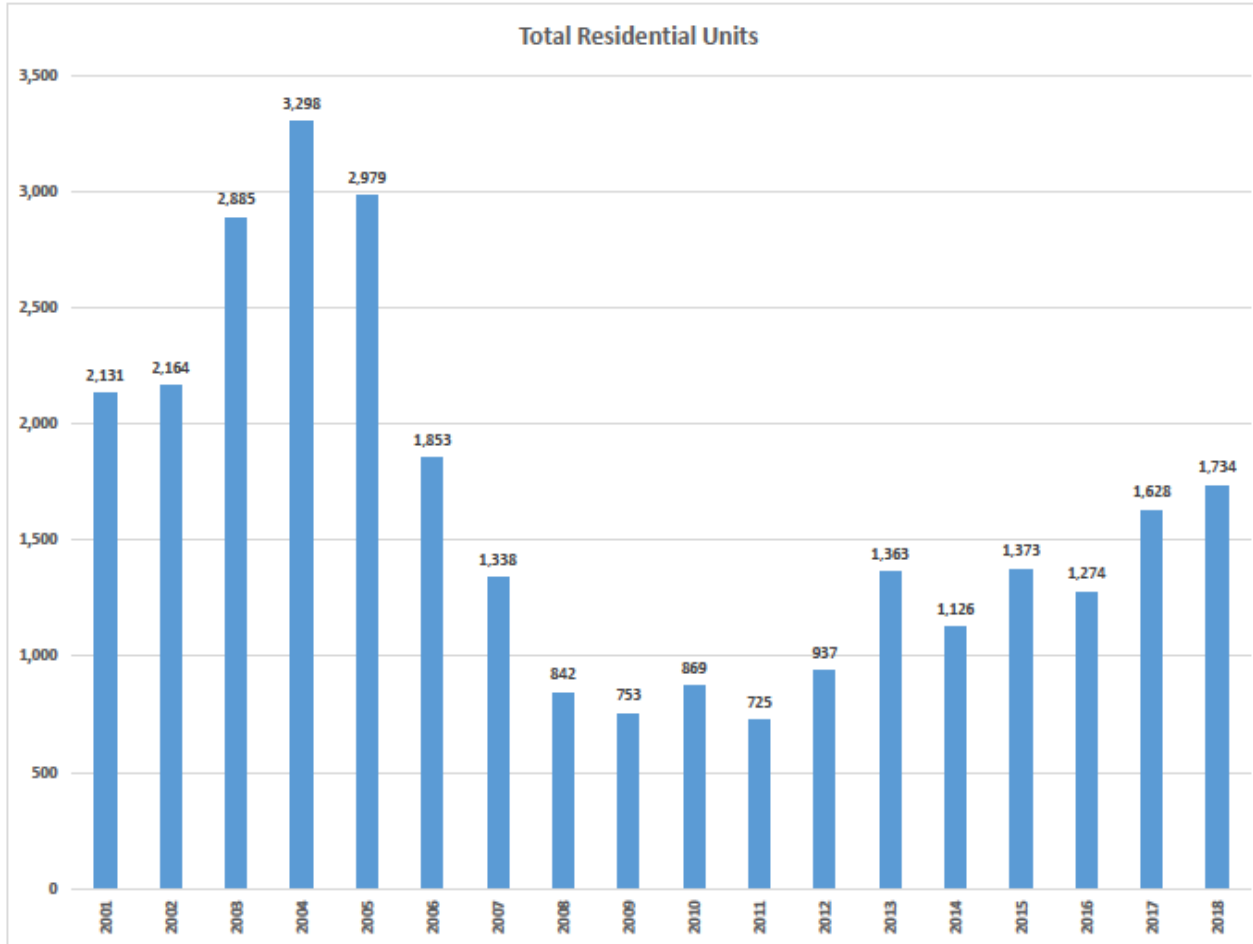
Home Builders Association of West Florida

May 2017

- BEBR Forecast for Santa Rosa County
 - 30,000 new residents (2017 – 2025)
 - 1.9% annual growth rate
 - Average of 1,500 new residential units per year
-

2018 BEBR Forecast

- 2018 Population Estimate: 174,887
 - 2025 Population Projection: 199,930
 - 1.9% Annual Growth Rate through 2025
 - 2030 Population Projection: 215,500
 - 1.8% Annual Growth Rate through 2030
-

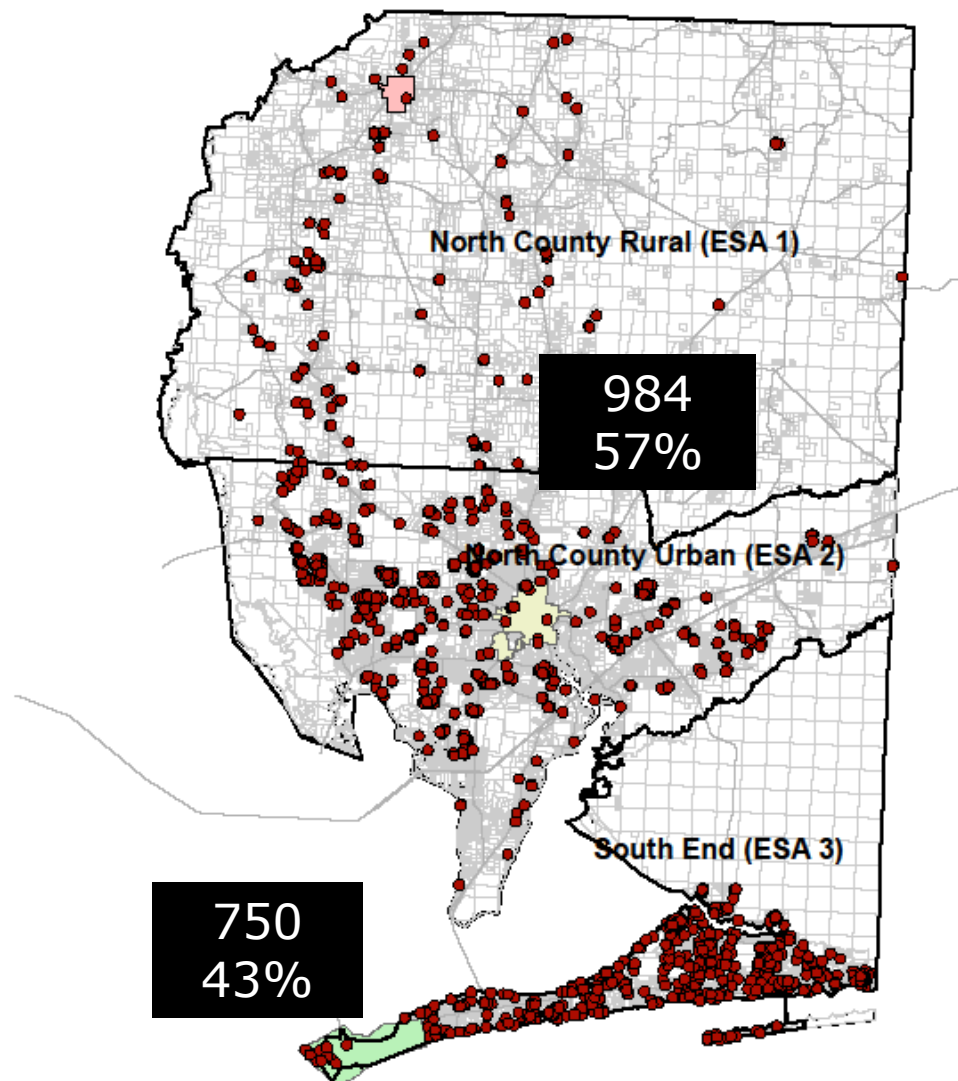


Annualized Growth Rate 2000 - 2007
4.6%

Annualized Growth Rate 2008 - 2012
1.2%

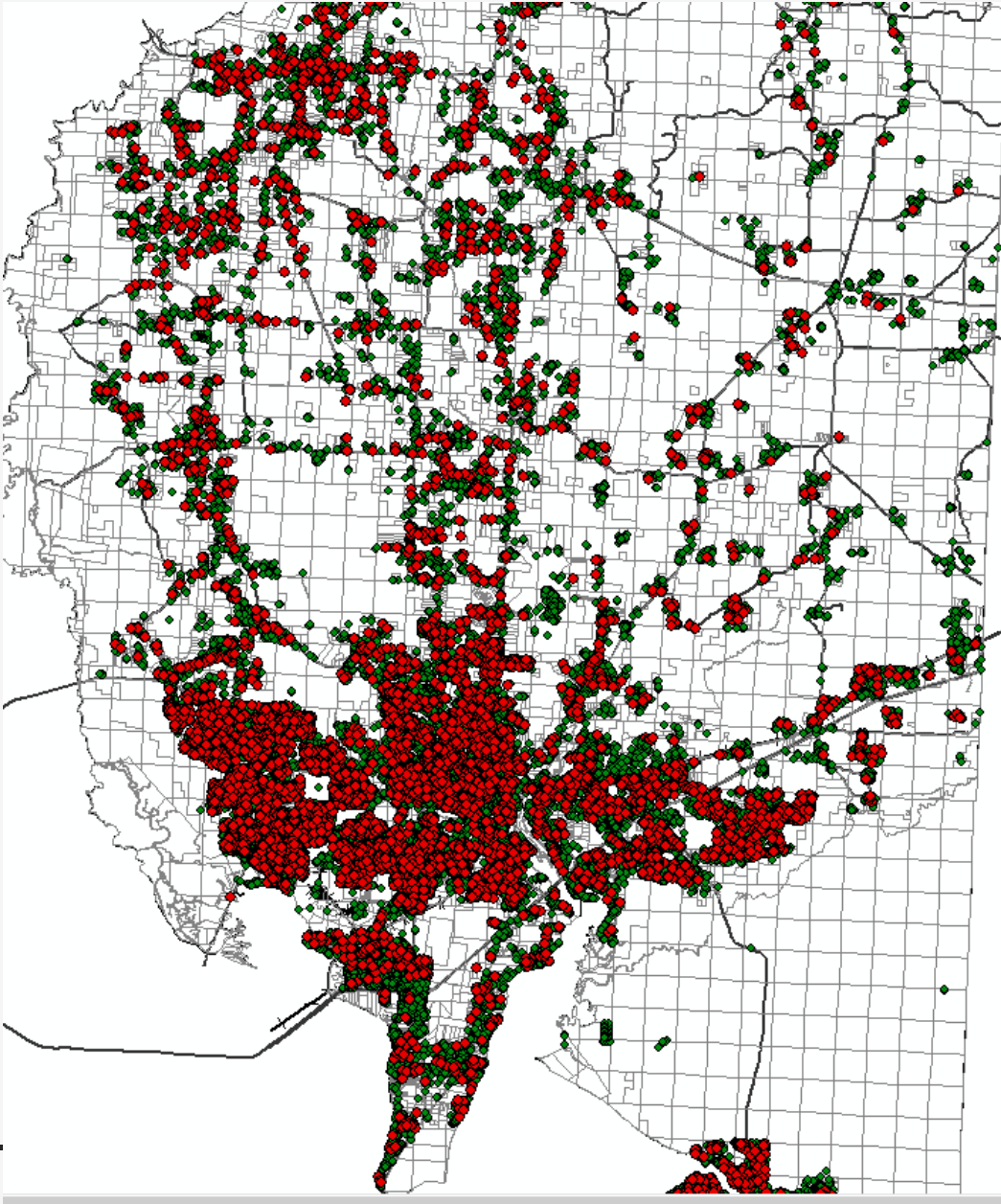
Annualized Growth Rate 2013-2017
2.1%

2018 Growth Rate
2.4%



2018 Residential Development

1,734 Single Family / Mobile Homes



North County

100 Single Family

17 ELEM

9 MIDDLE

11 HIGH

100 Multi Family

13 ELEM

5 MIDDLE

5 HIGH



South End

100 Single Family

100 Multi Family

18 ELEM

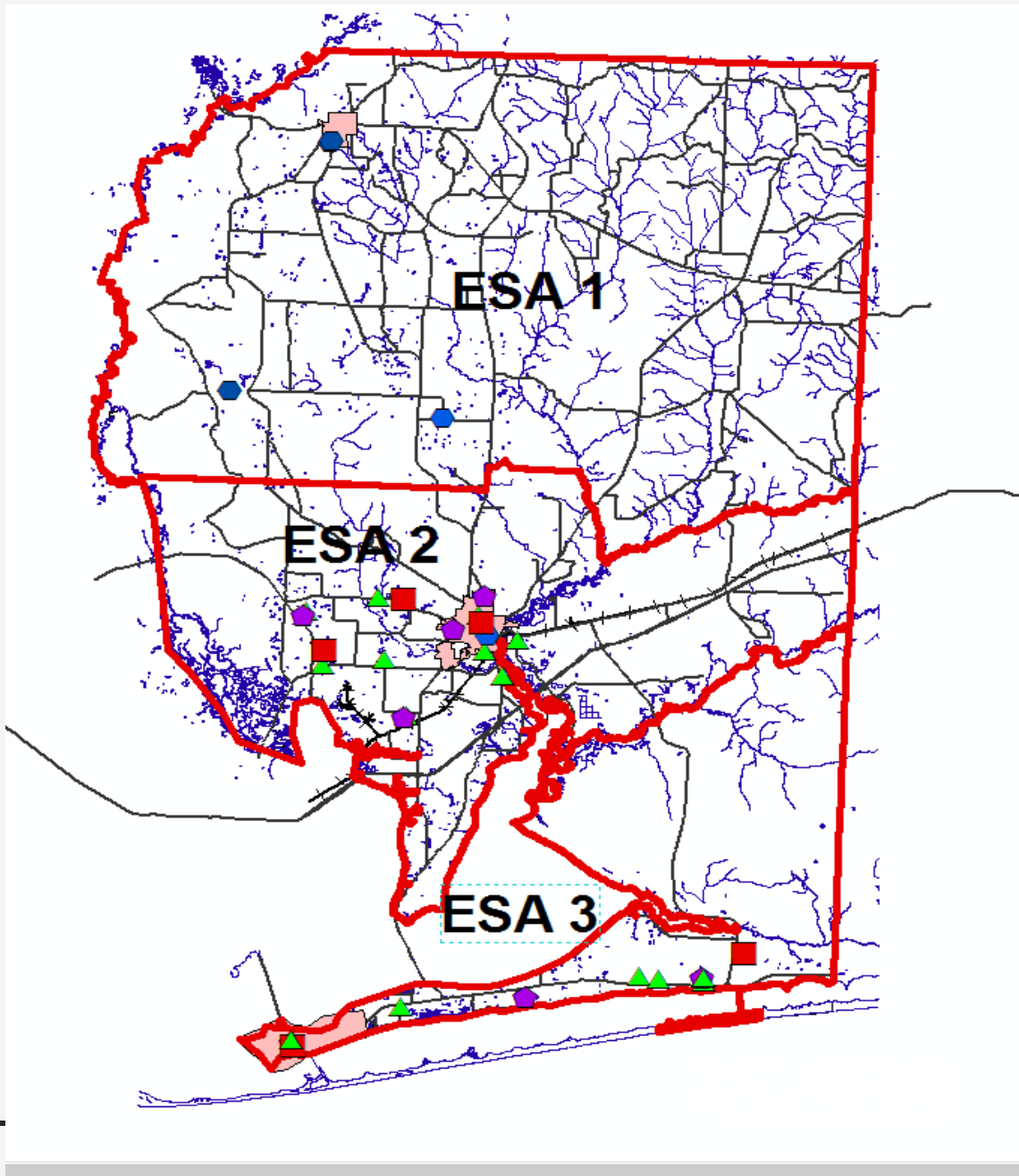
10 MIDDLE

13 HIGH

6 ELEM

3 MIDDLE

4 HIGH

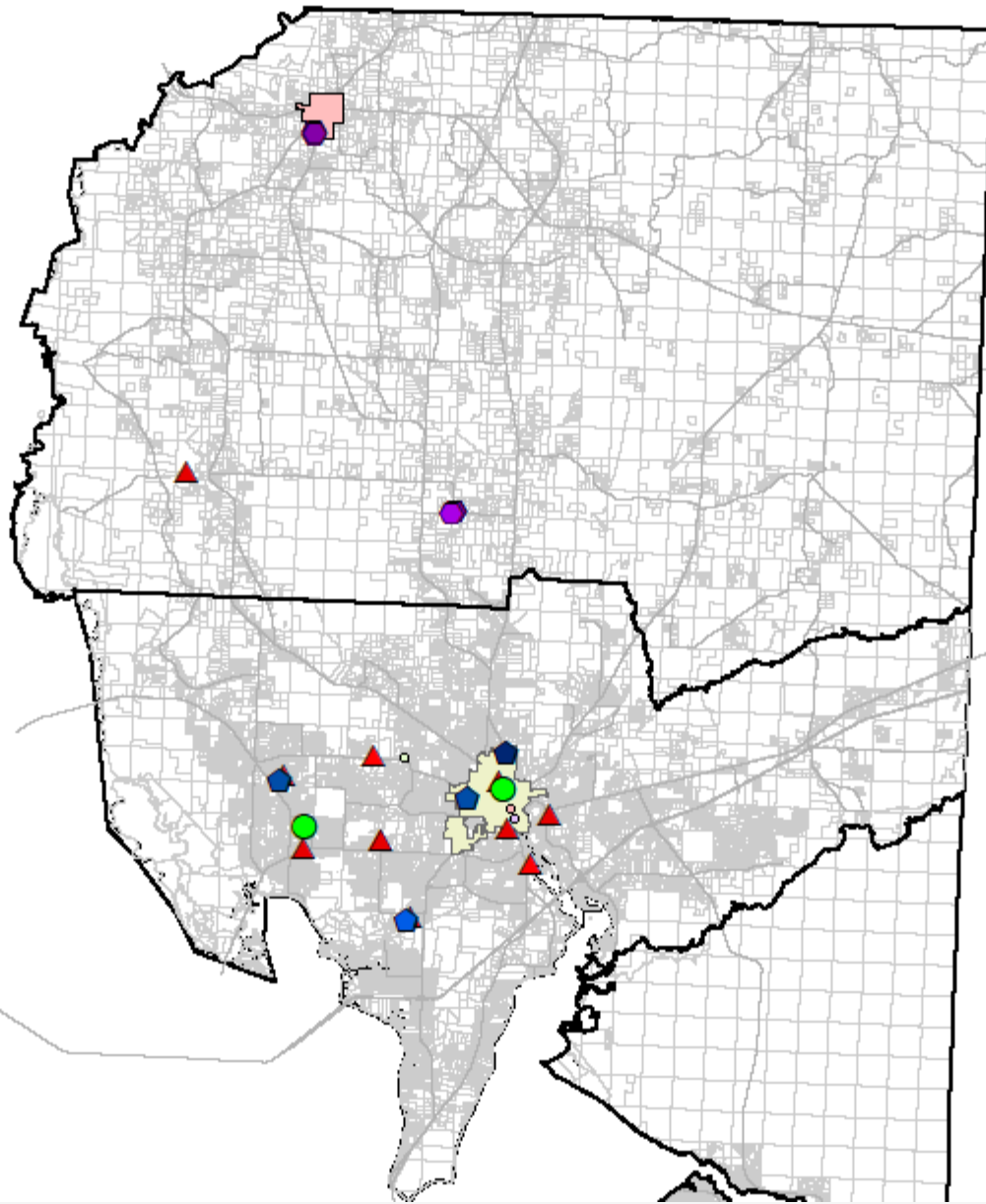


NORTH	CAPACITY	ENROLLMENT	% USE
ELEMENTARY	8,805	7,439	84%
MIDDLE	4,405	3,721	84%
HIGH	5,078	4,305	85%
TOTAL	18,288	15,465	85%

SOUTH	CAPACITY	ENROLLMENT	% USE
ELEMENTARY	5,789	5,491	95%
MIDDLE	3,218	3,075	96%
HIGH	4,114	4,096	100%
TOTAL	13,121	12,622	96%

TOTAL	CAPACITY	ENROLLMENT	% USE
ELEMENTARY	14,594	12,930	89%
MIDDLE	7,623	6,796	89%
HIGH	9,192	8,401	91%
TOTAL	31,409	28,127	90%

January 10, 2019 Student Count



NORTH COUNTY

Profile

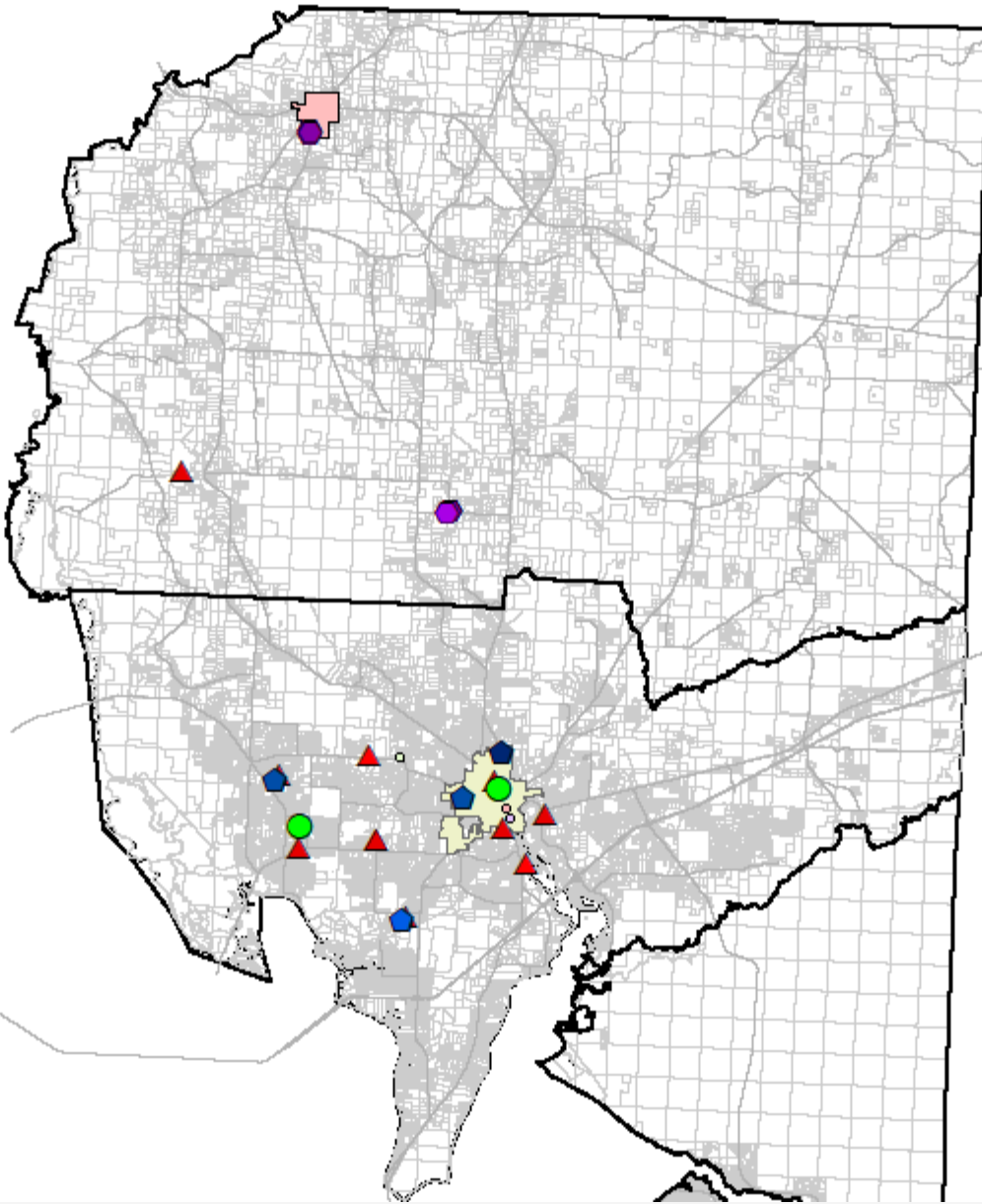
- **9 Elementary Schools (includes TRJ)**
 - **4 Middle Schools**
 - **2 High Schools**
 - **4 Combination Schools**
-
- **8,805 Elementary Student Stations**
 - **4,405 Middle Student Stations**
 - **5,078 High Student Stations**

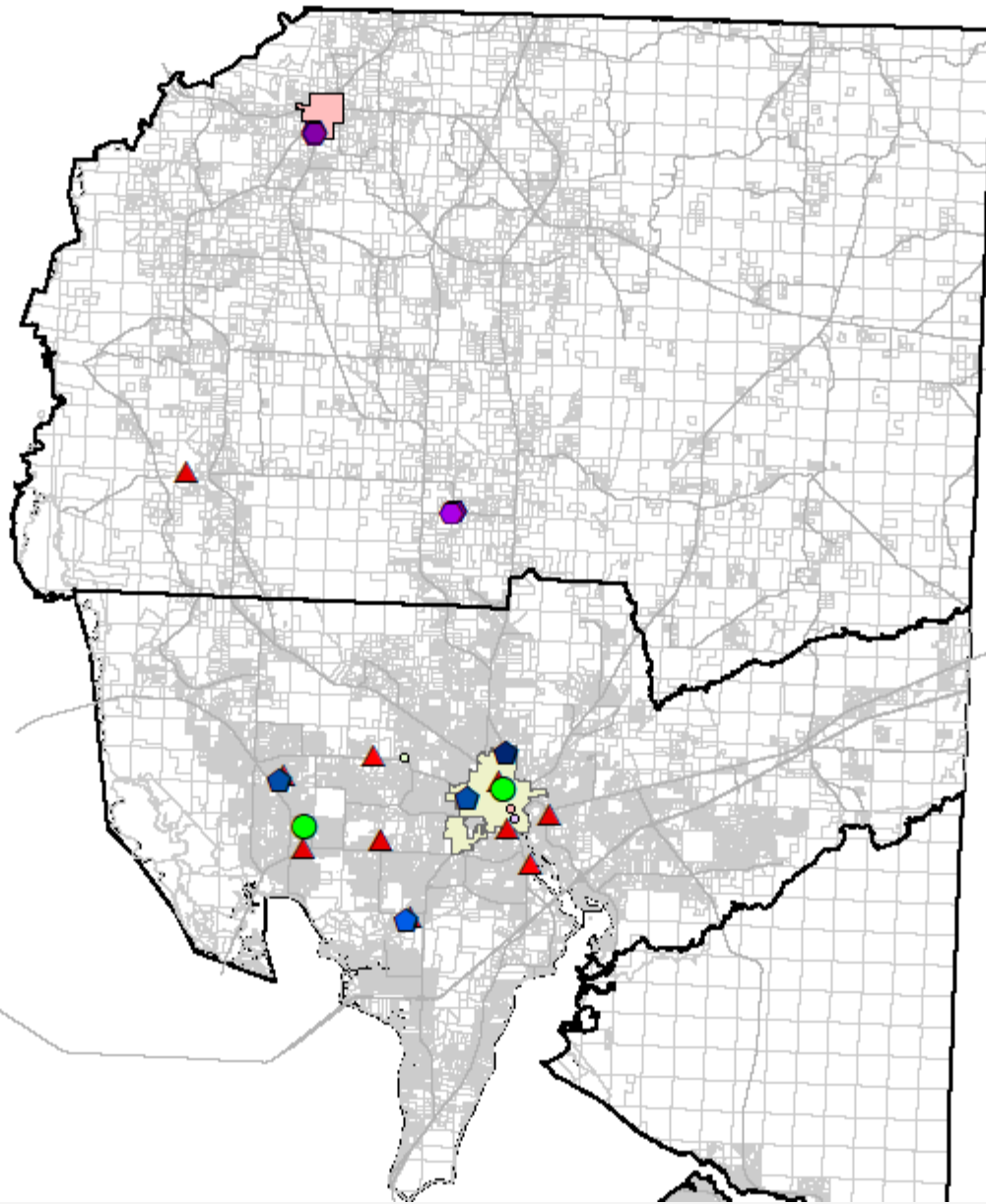
NORTH COUNTY

What happened in 2018?

- 74 new elementary students
- 123 new middle students
- 56 new high students

Actual Count
January 2018 – January 2019





The next 5 years?

2.0% annual growth – urban

1.4% annual growth - rural

- **718 new elementary students**
- **364 new middle students**
- **418 new high students**
- **No new capacity needed**
- **Redistricting Required**

The next 10 years?

- **1,527 new elementary students**
- **771 new middle students**
- **900 new high students**
- **New elementary needed**
- **New middle needed**
- **New high needed**
- **Redistricting Required**



South End

Profile

- **6 Elementary Schools**
 - **3 Middle Schools**
 - **2 High Schools**
-
- **5,789 Elementary Student Stations**
 - **3,218 Middle Student Stations**
 - **4,114 High Student Stations**



South End

What happened in 2018?

- 108 new elementary students
- 50 new middle students
- 179 new high students

Actual Count
January 2018 – January 2019

A map of the South End neighborhood, showing its irregular coastline and internal street grid. The area is shaded in light gray. Several colored markers are placed on the map: a large blue circle in the upper right, a green circle in the upper right, a blue circle in the center, and several red triangles along the southern and western edges. The text "South End" is written in large, bold, black letters in the upper left corner.

South End

The next 10 years?

- 1,122 new elementary students
- 771 new middle students
- 900 new high students
- New high school needed
- Redistricting Required

The next 5 years?

- 2.0% annual growth rate
- 507 new elementary students
- 314 new middle students
- 427 new high students
- Redistricting Required

New K-8 School

- 705 elementary student stations
- 477 middle student stations
- Redistricting Required