

# SANTA ROSA SCHOOLS

*2017 Annual Assessment*

# Key Events in 2017

- 435 additional students
  - 1,628 new residential units
  - Sales tax renewed
  - FDOE authorizes new K-8 for South End
  - Homebuilders Association Study
- 



# 1/2 cent Sales Tax Renewal Capital Outlay for Schools

- March 2017 – Approved by voters
- January 1, 2019 – December 31, 2029



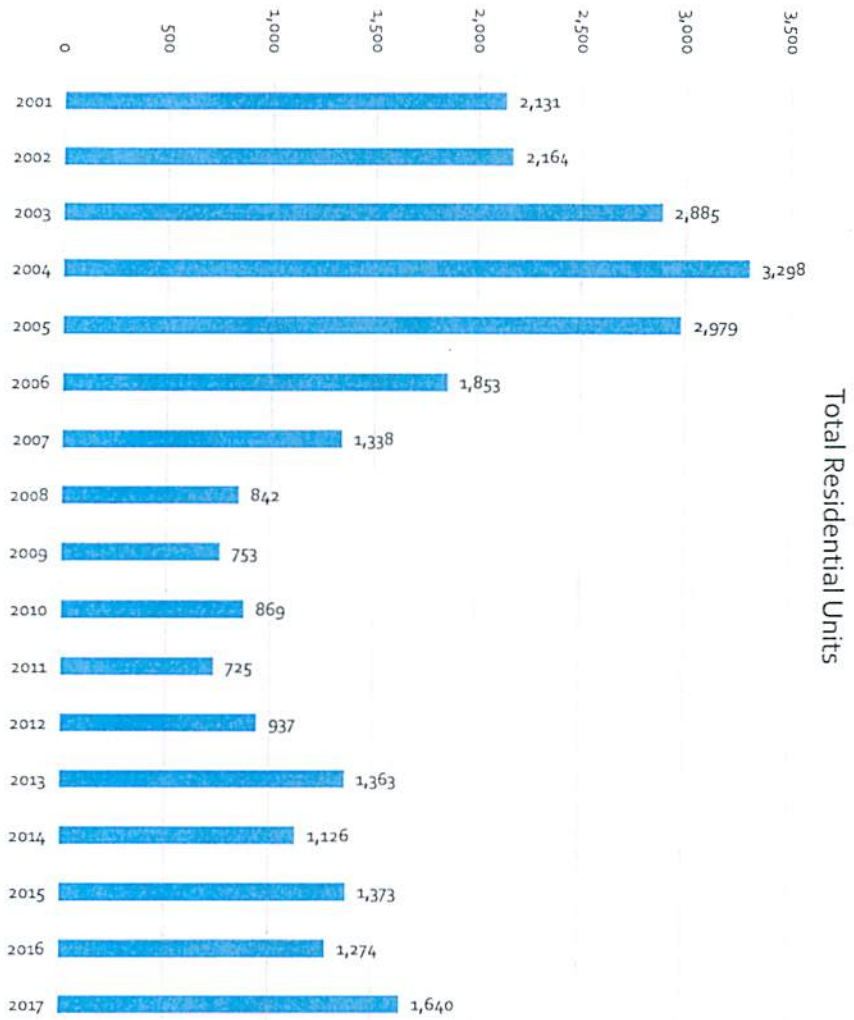
# State of Housing Report

## Home Builders Association of West Florida

### May 2017

- BEBR Forecast for Santa Rosa County
    - 30,000 new residents (2017 – 2025)
    - 1.9% annual growth rate
    - Average of 1,500 new residential units per year
- 





Annualized Growth Rate 2000 - 2007

4.6%

Annualized Growth Rate 2008 - 2012

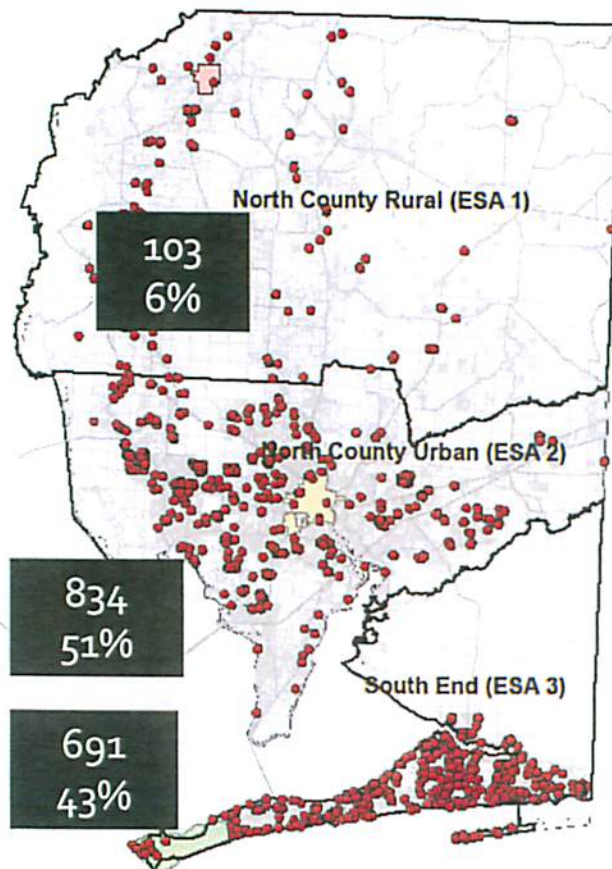
1.2%

Annualized Growth Rate 2013-2016

2.0%

2017 Growth Rate

2.3%



## 2017 Residential Development

1,628 Single Family / Mobile Homes

# North County

100 Single Family

18 ELEM

9 MIDDLE

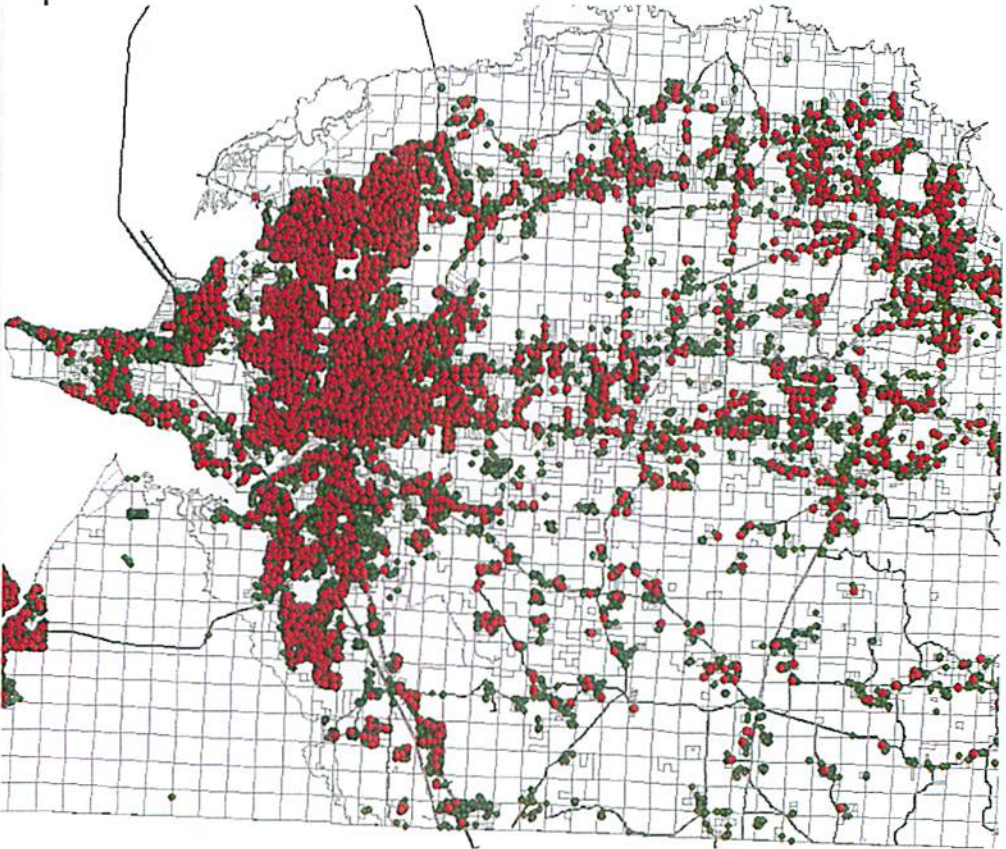
11 HIGH

100 Multi Family

16 ELEM

6 MIDDLE

7 HIGH







South  
End

100 Single Family

100 Multi Family

19 ELEM

10 MIDDLE

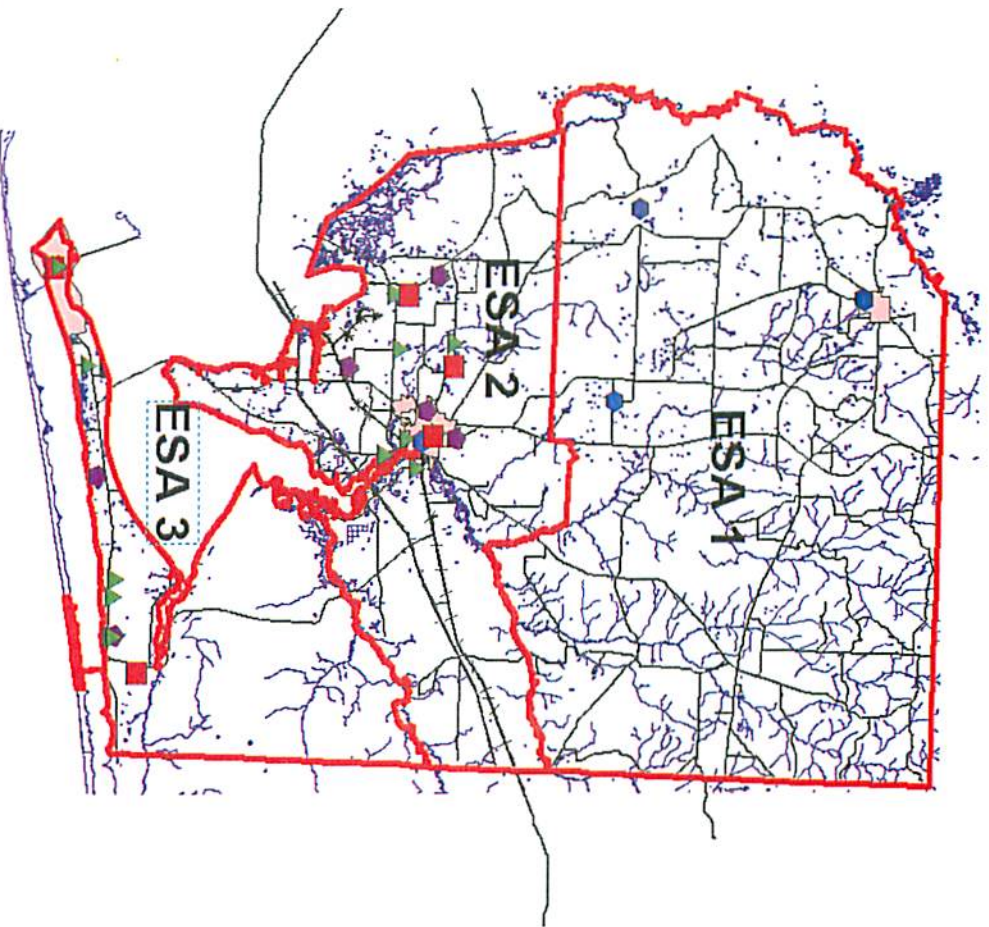
14 HIGH

7 ELEM

4 MIDDLE

4 HIGH

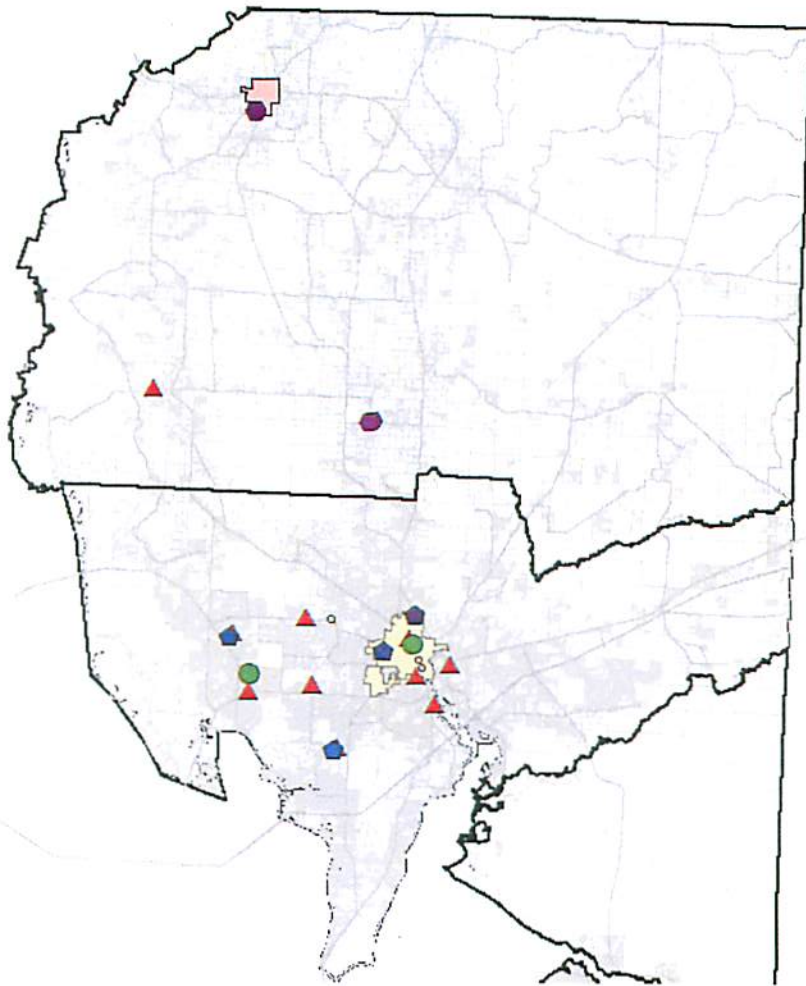




NORTH	CAPACITY	ENROLLMENT	% USE
ELEMENTARY	8,790	7,373	84%
MIDDLE	4,335	3,593	83%
HIGH	5,390	4,397	82%
TOTAL	18,515	15,363	83%

SOUTH	CAPACITY	ENROLLMENT	% USE
ELEMENTARY	5,767	5,383	93%
MIDDLE	3,218	3,025	94%
HIGH	4,064	3,917	96%
TOTAL	13,049	12,325	94%

TOTAL	CAPACITY	ENROLLMENT	% USE
ELEMENTARY	14,557	12,756	88%
MIDDLE	7,553	6,618	88%
HIGH	9,454	8,314	88%
TOTAL	31,564	27,688	88%



## NORTH COUNTY

### Profile

- 9 Elementary Schools
  - 4 Middle Schools
  - 2 High Schools
  - 4 Combination Schools
- 
- 8,790 Elementary Student Stations
  - 4,335 Middle Student Stations
  - 5,390 High Student Stations

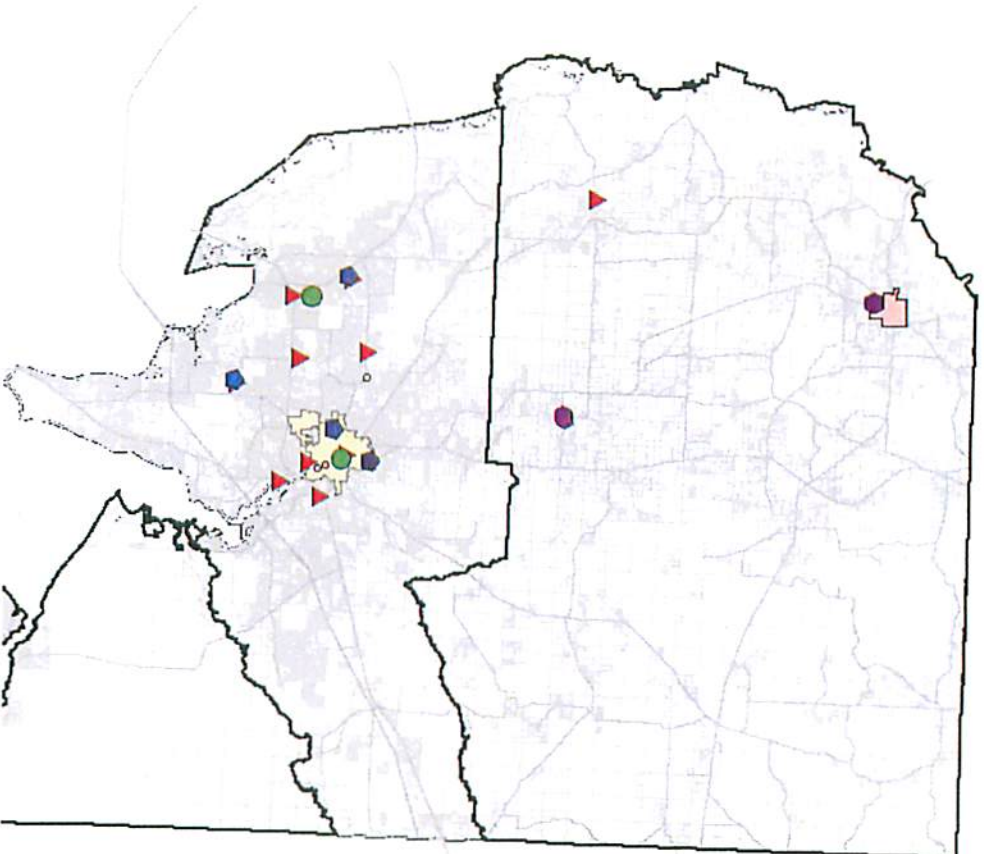
## NORTH COUNTY

### What happened in 2017?

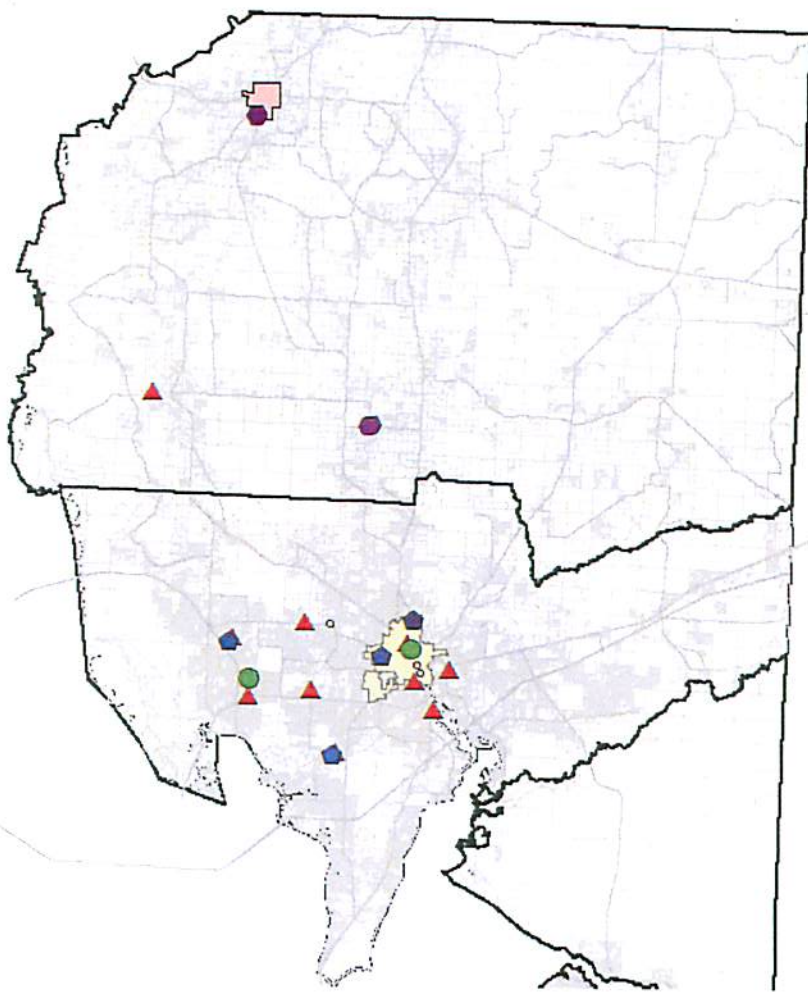
- 7 new elementary students
- 159 new middle students
- 12 new high students

Actual Count

January 2017 – January 2018







NORTH COUNTY

## The next 5 years?

2.0% annual growth – urban

1.4% annual growth - rural

- 672 new elementary students
- 360 new middle students
- 440 new high students
- No new capacity needed

## The next 10 years

- 1,551 new elementary students
- 756 new middle students
- 927 new high students
- New elementary needed
- New middle needed
- New high needed



## Profile

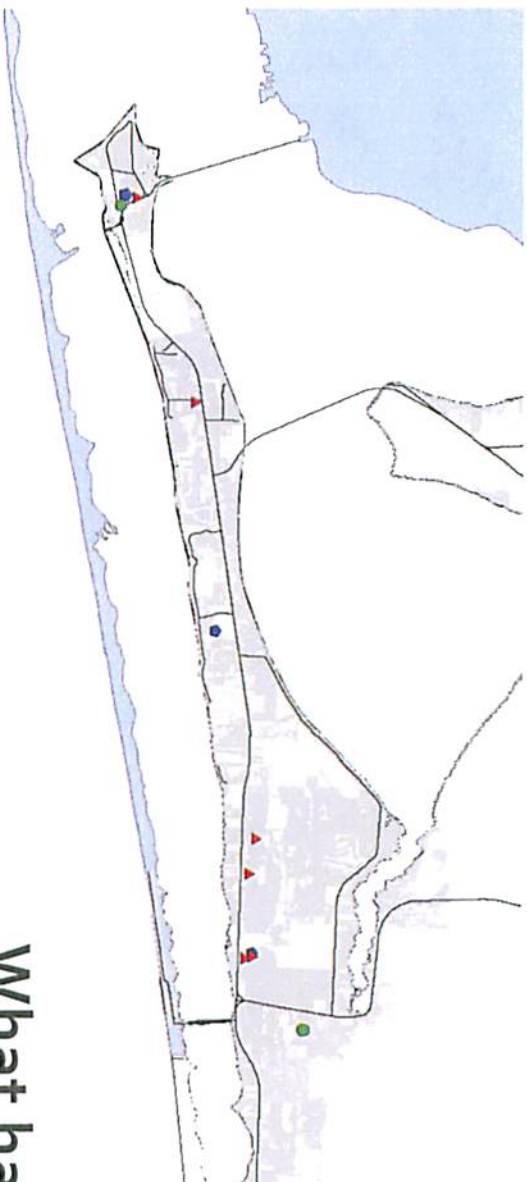
- 6 Elementary Schools
- 3 Middle Schools
- 2 High Schools

- 5,767 Elementary Student Stations
- 3,218 Middle Student Stations
- 4,064 High Student Stations

## South End

---





## South End

### What happened in 2017?

- 134 new elementary students
- 84 new middle students
- 39 new high students

Actual Count  
January 2017 – January 2018





### The next 10 years

- 1,179 new elementary students
  - 662 new middle students
  - 858 new high students
  - New high school needed
- 

### The next 5 years?

- 2.0% annual growth rate
- 560 new elementary students
- 315 new middle students
- 408 new high students
- New K-8 School
  - 800 elementary student stations
  - 400 middle student stations