

Santa Rosa County School District

Quarterly Custodial Review

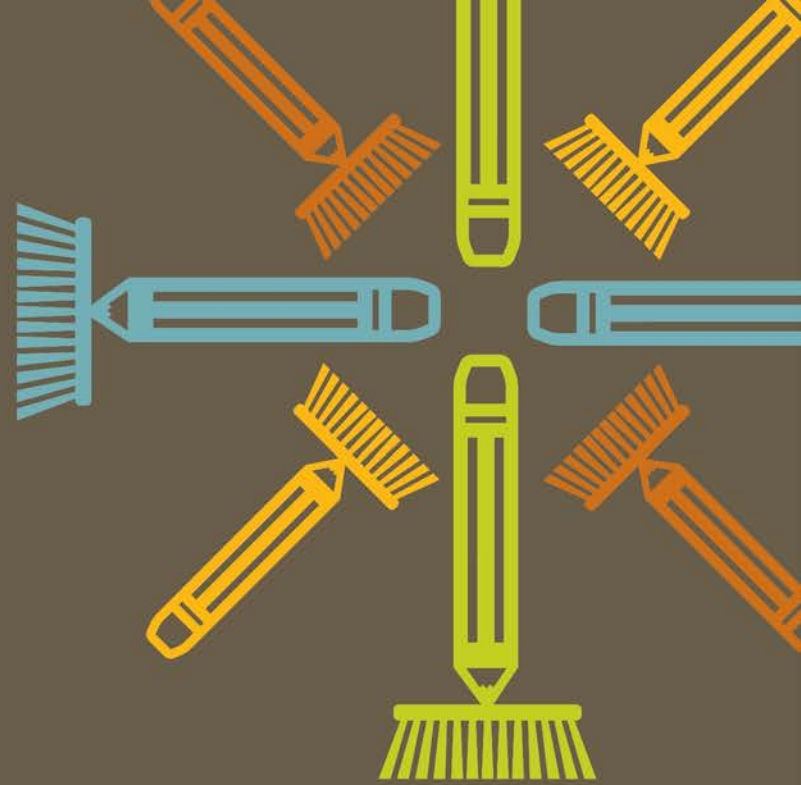
May 24, 2012



SOUTHERN
— MANAGEMENT —

keeping schools clean





Quality Control Scores

Pre-K & Elementary Schools

Santa Rosa County Schools	Score
T R JACKSON Pre-K	3
BAGDAD ELEM.	3
BENNY RUSSELL ELEM	3
BERRYHILL ELEM.	3
CHUMUCKLA ELEM.	4
EAST MILTON ELEM.	3
GULF BREEZE ELEM.	3
JAY ELEM.	3
ORIOLE BEACH ELEM.	3
PEA RIDGE ELEM.	3
RHODES ELEM.	3
WOODLAWN BEACH ELEM.	4
HOLLEY-NAVARRE PRIMARY	3
WEST NAVARRE PRIMARY	3
DIXON PRIMARY	3

Middle & Intermediate Schools

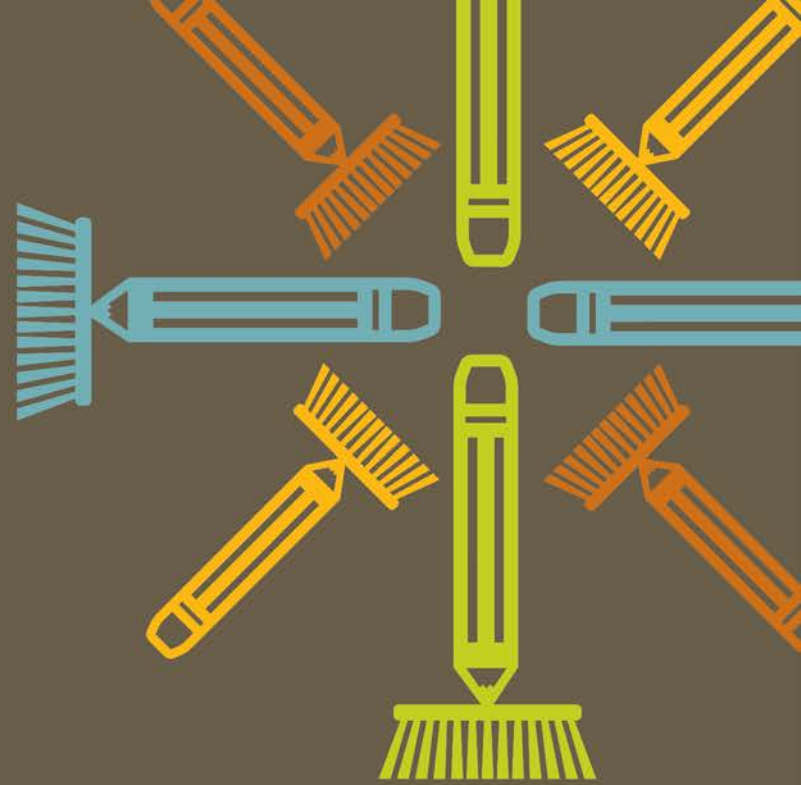
Santa Rosa County Schools	Score
GULF BREEZE MIDDLE	3
HOBBS MIDDLE	4
HOLLEY-NAVARRE MIDDLE	3
KING MIDDLE	3
SIMS MIDDLE	3
AVALON MIDDLE	4
HOLLEY-NAVARRE INTERMEDIATE	4
WEST NAVARRE Intermediate	3
DIXON INTERMEDIATE	3

Vocational & High Schools

Santa Rosa County Schools	Score
GULF BREEZE HIGH	3
JAY HIGH	3
MILTON HIGH	3
NAVARRE HIGH	3
PACE HIGH	3
CENTRAL SCHOOL	3
LOCKLIN VO-TECH	3

Admin & Support Services

Santa Rosa County Sites	Score
CANAL STREET ADMIN.	4
SUPPORT SERVICES	3
BERRYHILL ADMIN.	4



Summer Plan



Working with each school on their individual summer plan.



Over 34,000 hours will be used in SRCS this summer.



Preparing equipment and supplies for a smooth transition.

New Floor Finish



Now Available – New X-Coat™ Nano

X-Coat Nano is a revolutionary floor finish that combines deep gloss, high durability and ease-of-use into one product. Incorporating Essential's patented nano-zinc cross-linking technology, X-Coat Nano produces a beautiful, long lasting shine.

X-Coat™ Nano

Revolutionary Floor Finish

FEATURES:

- Incorporates our patented nano-zinc technology for more thorough and denser cross-linking of finish.
- Nano-zinc cross-linking provides superior:
 - Lay-down gloss
 - Mark resistance
 - Gloss build
 - Soil resistance
 - Durability
 - Dry and recoat times
- Ammonia-free for dramatically-reduced odor.
- Ideal for limited maintenance programs, yet responds to daily burnishing, if desired.
- Low-emissions formula - meets California's new 1% VOC Regulation.
- Fast-drying - 15-20 minutes under normal conditions.
- Slip-resistant - UL-classified



www.essind.com

TYPICAL PROPERTIES	X-Coat Nano											
	Type	Form	Odor	Color	Weight per Gallon	pH	Storage Stability	Frozen/Thaw	V.O.C.	Coverage	Dry Time	
X-Coat Nano	Acrylic Emulsion	Opaque Liquid	None	Milky White	9.57 lbs.	9.0 - 9.5	Minimum One Year	Do Not Freeze	<.05%	3000 Sq. Ft. Per Gal.	15-20 Minutes	

©2011 Essential Industries, Inc. | Merton, Wisconsin 53056 | Phone: (262) 538-1122 | www.essind.com | H0911 LT-9000F08FF

New Floor Finish

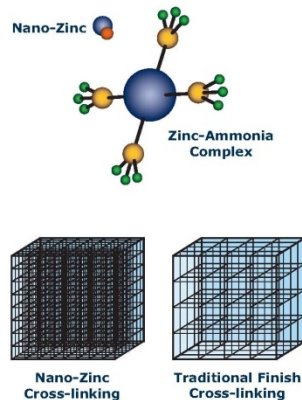
X-Coat™ Nano



Revolutionary Floor Finish

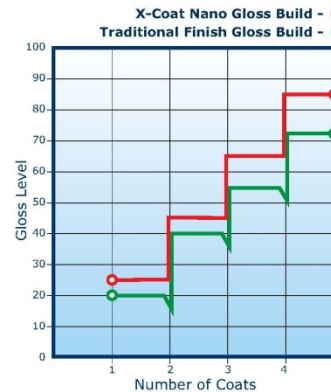
TRADITIONAL FINISH CROSS-LINKING VS. NANO-ZINC CROSS-LINKING

Traditional finishes are cross-linked with a zinc-ammonia complex, a rather large molecule. X-Coat Nano is cross-linked without ammonia and as the word nano implies, these molecules are extremely small (see illustration). Unlike the large zinc-ammonia complex, the tiny nano molecule is able to completely penetrate the polymers during cross-linking to provide enhanced durability and superior black mark and soil resistance.



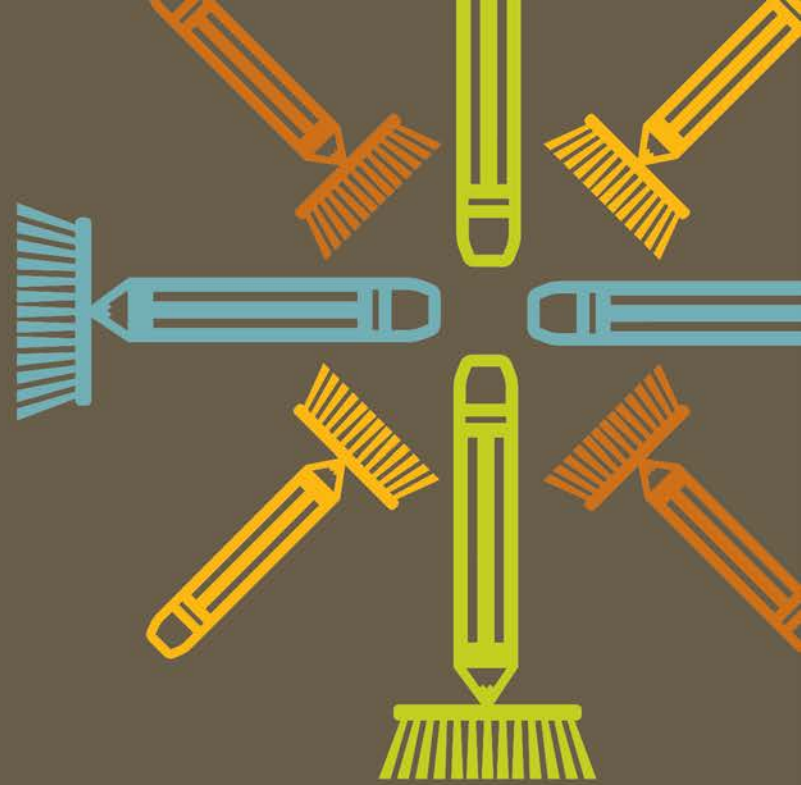
TRADITIONAL GLOSS BUILD VS. X-COAT NANO GLOSS BUILD

The ammonia found in traditional finishes acts as a built in stripper (modern strippers are formulated with "odorless ammonia"); making it critical that each coat is completely dry before applying additional finish. The aggressive nature of ammonia slows gloss build, especially when coats are rushed or drying conditions are poor. Since X-Coat Nano is ammonia-free, it is able to build gloss faster than a traditional floor finish as the chart below shows.



88FF

Visit www.essind.com for more information including an informative video.



Employee of the Quarter

Employee of the Quarter Recognition



Ronald Kradel

- **Work Site: Avalon Middle School**
- **Position :Night Lead**

Thank You

Questions/Comments