

# SANTA ROSA COUNTY SCHOOL BOARD MEETING

05/22/14

**Santa Rosa County  
School District**



*"A Tradition of Excellence"*



**SOUTHERN  
— MANAGEMENT —**

*keeping schools clean*

AN ABM COMPANY

# Pre-K & Elementary Schools

Santa Rosa County Schools	Score
BAGDAD ELEM.	3
BENNY RUSSELL ELEM	3
BERRYHILL ELEM.	3
CHUMUCKLA ELEM.	3.2
DIXON PRIMARY	3
EAST MILTON ELEM.	3.1
HOLLEY-NAVARRE PRIMARY	4
GULF BREEZE ELEM.	3
JAY ELEM.	3
ORIOLE BEACH ELEM.	3
PEA RIDGE ELEM.	3
RHODES ELEM.	3.2
T.R. JACKSON Pre-K	3
WEST NAVARRE PRIMARY	3.5
WOODLAWN BEACH MIDDLE	3.5



# Middle & Intermediate Schools

Santa Rosa County Schools	Score
AVALON MIDDLE	3.2
DIXON INTERMEDIATE	3
GULF BREEZE MIDDLE	3.2
HOBBS MIDDLE	3.3
HOLLEY-NAVARRE INTERMEDIATE	3.5
HOLLEY-NAVARRE MIDDLE	3.5
KING MIDDLE	3.1
SIMS MIDDLE	3
WEST NAVARRE INTERMEDIATE	3.5

# Vocational & High Schools

Santa Rosa County Schools	Score
CENTRAL SCHOOL	3.3
GULF BREEZE HIGH	3.5
JAY HIGH	3.2
LOCKLIN VO-TECH	3
MILTON HIGH	3
NAVARRE HIGH	3
PACE HIGH	3

# Admin & Support Services

Santa Rosa County Sites	Score
BERRYHILL ADMIN.	4
CANAL STREET ADMIN.	4
SUPPORT SERVICES	3

# Summer POD Training

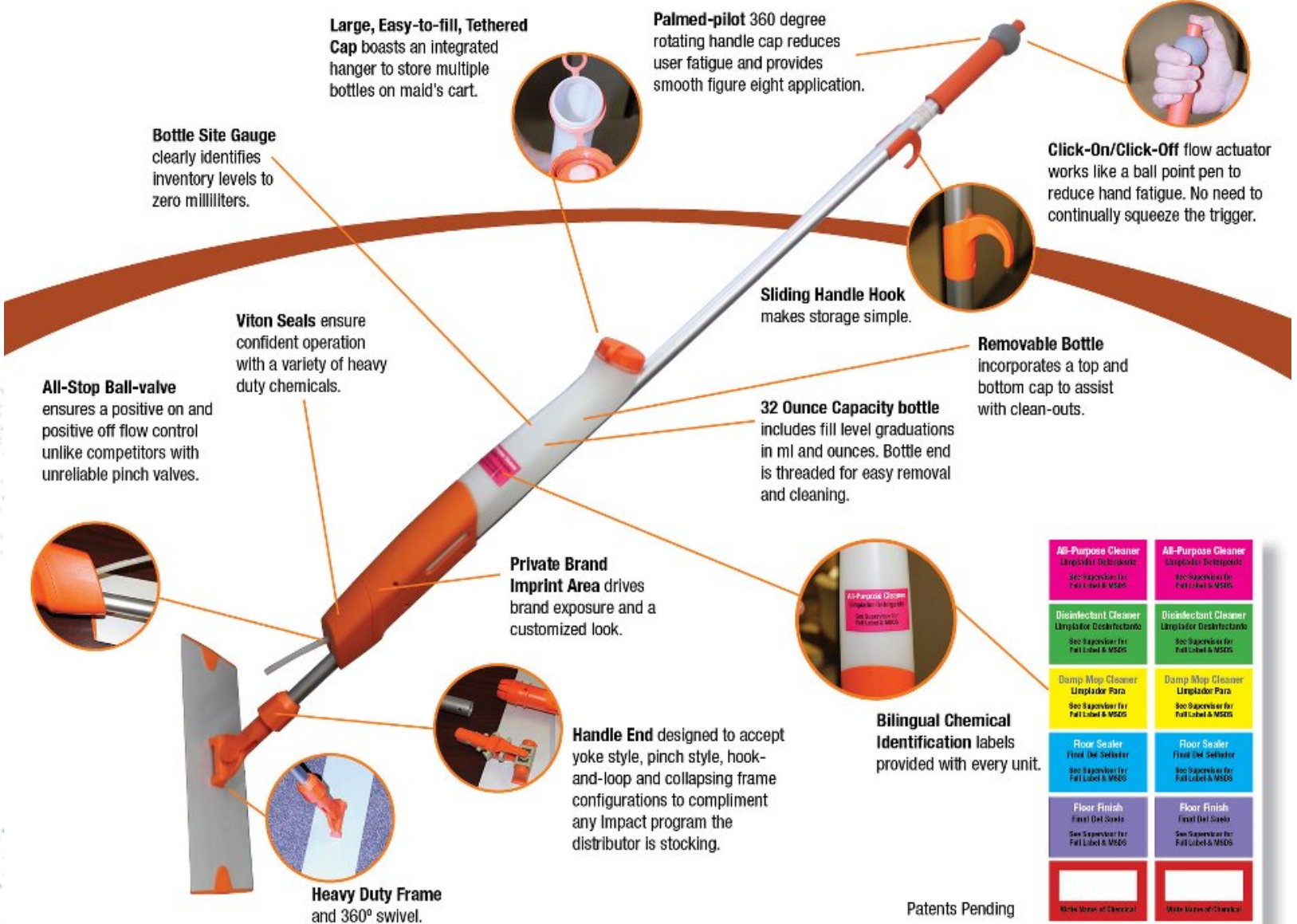
## POD TRAINING 2 (Summer Break)



# WAX APPLICATOR / DAILY MOPPING

## NO MORE HEAVY MOPS AND MOP BUCKETS!!!





<b>All-Purpose Cleaner</b> Unglador Desinfectante See Supervisor for Full Label & MSDS	<b>All-Purpose Cleaner</b> Limpiador Desinfectante See Supervisor for Full Label & MSDS
<b>Disinfectant Cleaner</b> Limpiador Desinfectante See Supervisor for Full Label & MSDS	<b>Disinfectant Cleaner</b> Limpiador Desinfectante See Supervisor for Full Label & MSDS
<b>Damp Mop Cleaner</b> Limpiador Para See Supervisor for Full Label & MSDS	<b>Damp Mop Cleaner</b> Limpiador Para See Supervisor for Full Label & MSDS
<b>Floor Sealer</b> Final Del Sellador See Supervisor for Full Label & MSDS	<b>Floor Sealer</b> Final Del Sellador See Supervisor for Full Label & MSDS
<b>Floor Finish</b> Final Del Suelo See Supervisor for Full Label & MSDS	<b>Floor Finish</b> Final Del Suelo See Supervisor for Full Label & MSDS
<b>White Wipe of Chemical</b>	<b>White Wipe of Chemical</b>

Patents Pending



# Employee of the Quarter



**Eric Ostrander**  
**Navarre High School**