

Santa Rosa County School District

Quarterly Custodial Review

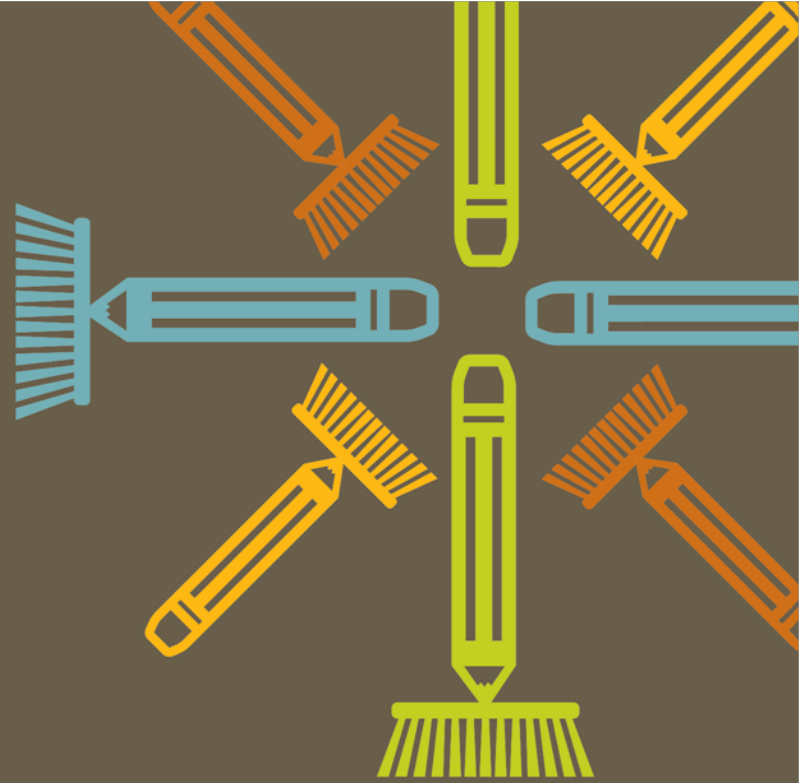
August 22, 2013



SOUTHERN
— MANAGEMENT —

keeping schools clean





Quality Control Scores

Pre-K & Elementary Schools

Santa Rosa County Schools	Score
BAGDAD ELEM	3
BENNY RUSSELL ELEM	3
BERRYHILL ELEM	3
CHUMUCKLA ELEM	4
DIXON PRIMARY	3
EAST MILTON ELEM.	3
GULF BREEZE ELEM.	4
HOLLEY-NAVARRE PRIMARY	4
JAY ELEM	4
ORIOLE BEACH ELEM	3
PEA RIDGE ELEM	3
RHODES ELEM	4
T R JACKSON PRE-K	3
WEST NAVARRE PRIMARY	4
WOODLAWN BEACH ELEM	4

Middle & Intermediate Schools

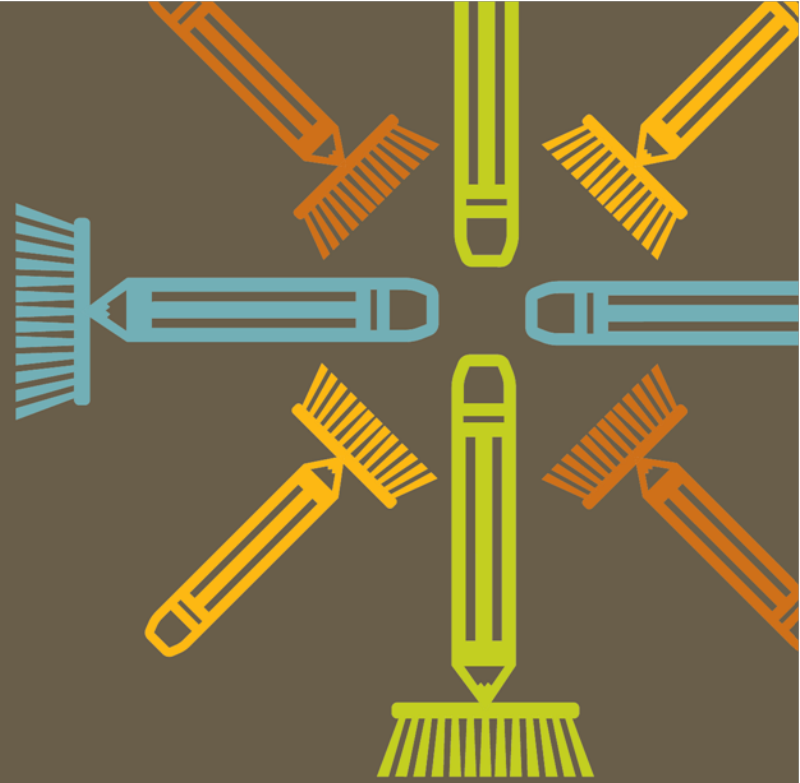
Santa Rosa County Schools	Score
AVALON MIDDLE	3
DIXON INTERMEDIATE	3
GULF BREEZE MIDDLE	4
HOBBS MIDDLE	4
HOLLEY-NAVARRE INTERMEDIATE	4
HOLLEY-NAVARRE MIDDLE	3
KING MIDDLE	4
SIMS MIDDLE	3
WEST NAVARRE INTERMEDIATE	4

Vocational & High Schools

Santa Rosa County Schools	Score
CENTRAL SCHOOL	3
GULF BREEZE HIGH	4
JAY HIGH	3
LOCKLIN VO-TECH	3
MILTON HIGH	4
NAVARRE HIGH	4
PACE HIGH	3

Admin & Support Services

Santa Rosa County Sites	Score
BERRYHILL ADMIN.	3
CANAL STREET ADMIN	4
SUPPORT SERVICES	3



Summer Clean Fun Facts

SUMMER FACTS

- 40,000 LABOR HOURS
- 700 GALLONS OF STRIPPER
- 4,800 GALLONS OF WAX
- 3,676,567 SQUARE FEET DEEP CLEANED

East Milton Elementary School



Avalon Middle School



Bagdad Elementary School



Bennett C. Russell Elementary

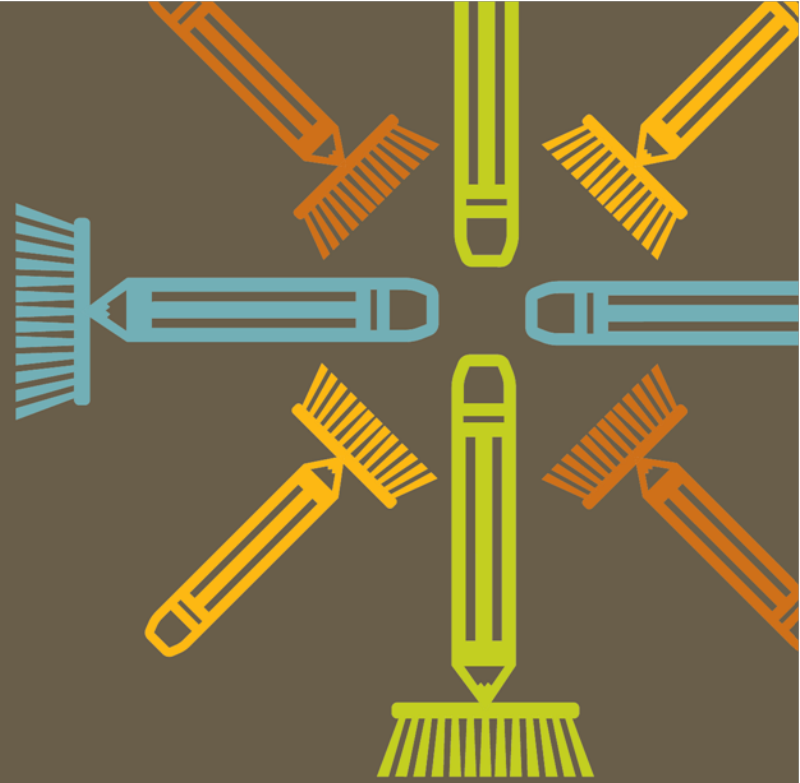


Pace High School



Principal Comments

- *“Avalon has a solid crew that has worked very hard this summer. Thank you for moving away from the team approach.”*
David Sigurnjak AMS
- *“The custodial staff has done a great job with the tile floors. The refinishing was very good.”*
Herb Cannon PHS
- *“Our crew did a fabulous job on the floors and campus cleaning this summer. This will be the first school year that our teachers will arrive to a perfectly spotless campus. When you look down each hallway, they look beautiful.”*
Dana King Fleming PRES



Employee's of the Quarter

Employee of the Quarter Recognition



Thank You

Questions/Comments