

# SANTA ROSA COUNTY

---

Transportation Department

March 2022

Quarterly Update



STUDENT TRANSPORTATION OF AMERICA®

# AGENDA

---

Staffing Report

Recruiting Update

Safety

Employee Welfare

Community Outreach

Employee of the Year

# STAFFING REPORT

## Staffing Report

Driver status	Site	North end	Milton	Pace	South End	Grand Total
	Reg Routes	21	28	38	55	142
	ESE Routes	1	13	9	13	36
	Open Route		1	5	3	8
	Medical Leave		1	1	<b>3</b>	5
	Bench after covering routes		0	0	0	0
	Total Bench	0	3	4	4	11
Recruitment	Target Bench / 15% Spare Ratio					0
	Over / Under Staff on Bench					0
County Drivers		4	8	2	7	21
County Monitors			1	0	2	3
Monitor Status	Number of Monitor	1	15	10	13	39
Monitors on Leave			0	0	0	0
	Extra Monitors		0	0	0	0
Training	0					
Number in Classroom	0	0	2	1		3
Number behind the wheel	0	0	2	0	2	4
Pending	0					
	0					
Testing Date						



# RECRUITING UPDATE

---

## NOW HIRING SCHOOL BUS DRIVERS

Obtain your CDL in as little as 6 weeks.

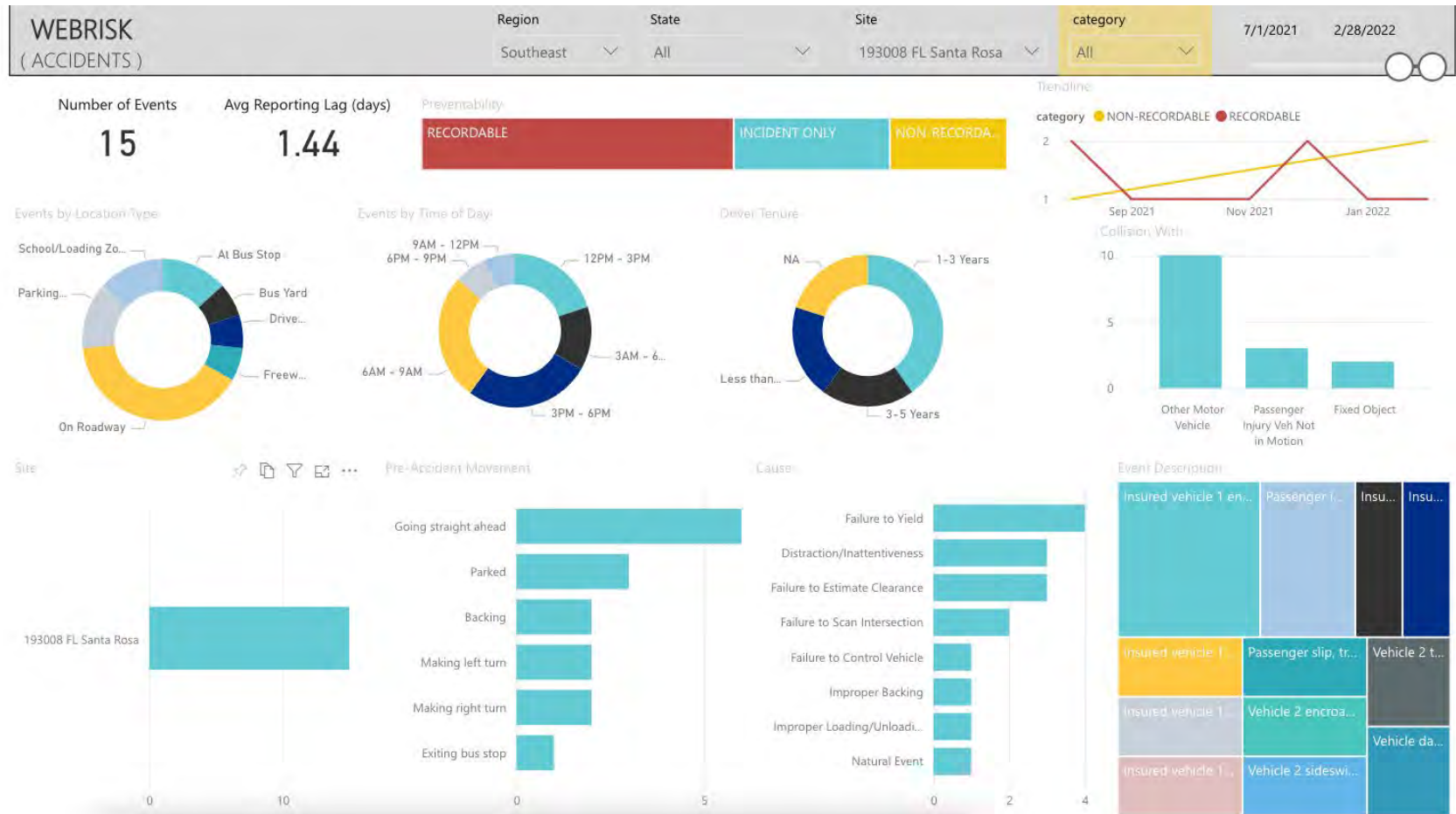
Bring your kids to work with you!

Schedule your interview today!

**APPLY TODAY!**  
**STICAREERS.COM**



# SAFETY



*Accident Frequency Ratio (AFR) better than company average by more than 2x*

# EMPLOYEE WELFARE





# COMMUNITY OUTREACH

---

Our employees held a coat drive for the homeless.

We were able to collect over 70 coats ranging from children's sizes to adults.

The donation went to Ferris Hill Baptist Church in Milton.



# EMPLOYEE OF THE YEAR

## STEPHEN PRICE

---



Pictured on Left:

Stephen Price  
Employee of the  
Year

Pictured below:

Travis Fulton,  
Stephen Price,  
Virginia Sutler  
and Joey Harrell

*Congratulations!*







# THANK YOU

[www.ridestbus.com](http://www.ridestbus.com)



STUDENT TRANSPORTATION OF AMERICA®