

Santa Rosa County School District

Quarterly Custodial Review

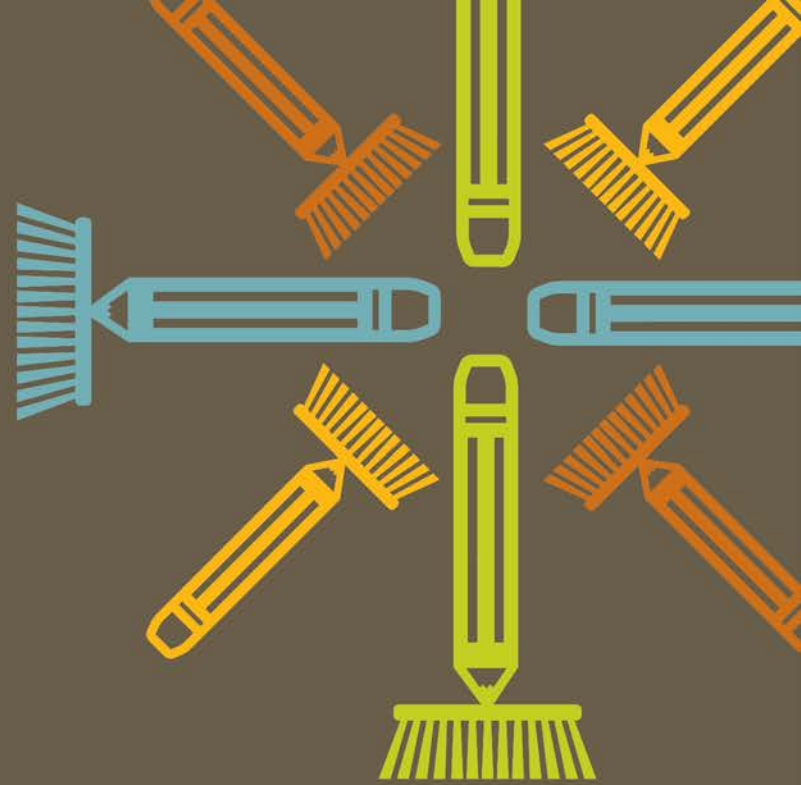
November 15, 2012



SOUTHERN
— MANAGEMENT —

keeping schools clean





Quality Control Scores

Elementary & Intermediate Schools

Santa Rosa County Schools	Score
T R JACKSON	3
BAGDAD ELEM.	3
BENNY RUSSELL ELEM	3
BERRYHILL ELEM.	4
CHUMUCKLA ELEM.	4
DIXON PRIMARY	3
DIXON INTERMEDIATE	3
EAST MILTON ELEM.	3
GULF BREEZE ELEM.	4
JAY ELEM.	3
ORIOLE BEACH ELEM.	3
PEA RIDGE ELEM.	3
RHODES ELEM.	3
HOLLEY-NAVARRE INTERMEDIATE	4
HOLLEY-NAVARRE PRIMARY	4
WEST NAVARRE PRIMARY	3
WEST NAVARRE INTERMEDIATE	3

Middle & Intermediate Schools

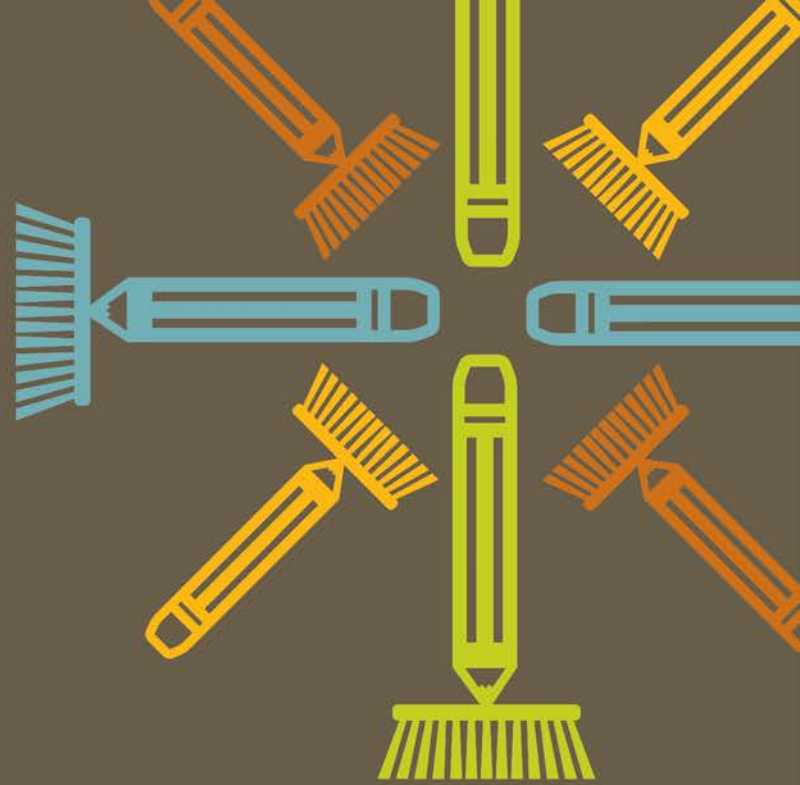
Santa Rosa County Schools	Score
AVALON MIDDLE	3
GULF BREEZE MIDDLE	3
HOBBS MIDDLE	4
HOLLEY-NAVARRE MIDDLE	3
KING MIDDLE	3
SIMS MIDDLE	3
WOODLAWN MIDDLE	4

High Schools

Santa Rosa County Schools	Score
GULF BREEZE HIGH	3
JAY HIGH	3
MILTON HIGH	3
NAVARRE HIGH	3
PACE HIGH	3
CENTRAL SCHOOL	3
LOCKLIN TECH	3

Admin & Support Services

Santa Rosa County Sites	Score
CANAL STREET ADMIN.	4
SUPPORT SERVICES	3
BERRYHILL ADMIN.	4



Improving Customer Satisfaction !

**Create Inspection****Find Inspection****Run Report**

Jeff Oliver at 11:34 AM

■ indicates a required field

Property:	ABM Tower	Space/Floor:	Lunch Room			
Inspection Class:	General Office	Inspection Type:	Full Inspection			
Inspector:	Oliver, Jeff	Inspection Date:	4/25/2006	Time:	12:00	PM
Occupant:		Room/Area:				

Items	Score	Condition	Weight	Comments
Office Carpet	4 3.5 3 2.5 2 1	N/A	100	
Office Carpet Edging	4 3.5 3 2.5 2 1	N/A	100	
Office Chairs	4 3.5 3 2.5 2 1	DB-Debris	100	Rear of seats
Office Desk Tops & Tabletops	4 3.5 3 2.5 2 1	N/A	100	
Office Floors & Baseboards	4 3.5 3 2.5 2 1	BU-Buildup	100	Corners
Office Furniture	4 3.5 3 2.5 2 1	N/A	100	
Office Horizontal Surfaces	4 3.5 3 2.5 2 1	N/A	100	
Office Telephones	4 3.5 3 2.5 2 1	DT-Dirty	100	Receiver
Office Trash Cans	4 3.5 3 2.5 2 1	N/A	100	
Office Vents	4 3.5 3 2.5 2 1	MI-Maint Item	100	Loose
Office Walls	4 3.5 3 2.5 2 1	N/A	100	
Restroom Dispensers & Containers	4 3.5 3 2.5 2 1	N/A	100	

[Logbook](#)[Inspection](#)

Jeff Oliver at 3:40 PM

DASHBOARD - INSPECTION

Region

Property

Inspection Class

Date Range

Ohio

Select...

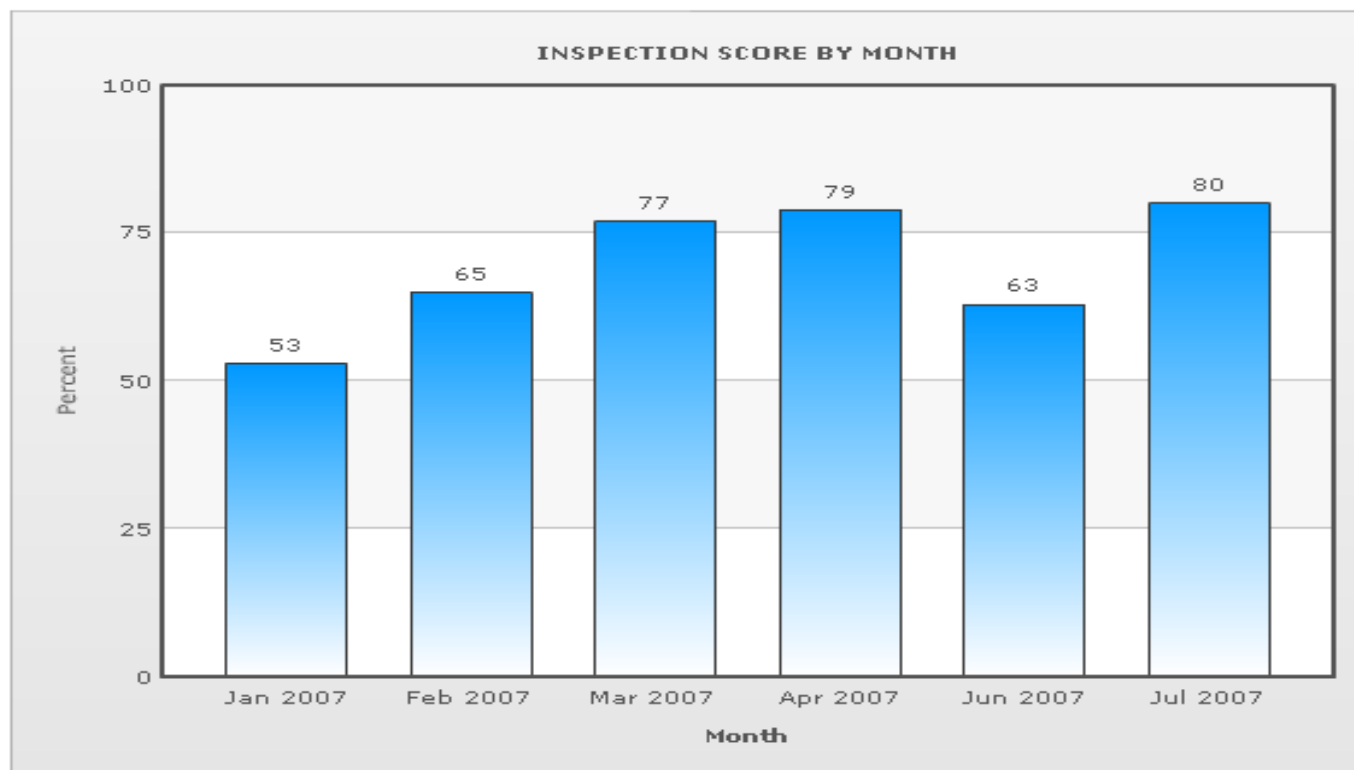
General Office

1/1/2007

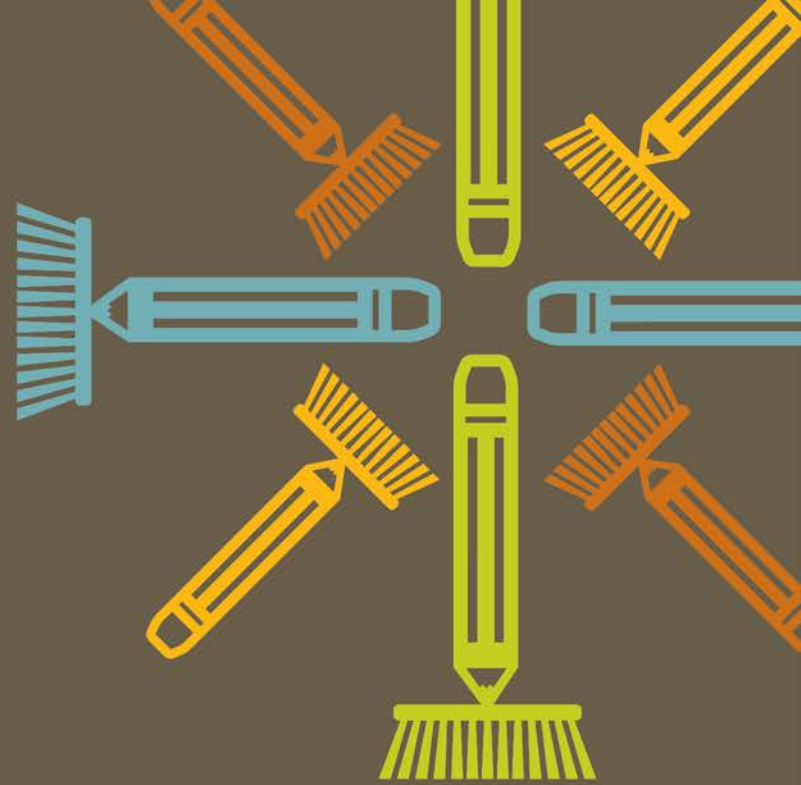
7/31/2007

FIND

INSPECTION SCORE BY MONTH

[Print](#)

- <https://adobeformscentral.com/?f=3xFnLwuj1Jpo-PjJ5281Gw>



Employee of the Quarter

Employee of the Quarter Recognition



**Chumuckla Elementary
Day Custodian
Mike Porter**

Thank You

Questions/Comments