

Santa Rosa County School District

Quarterly Custodial Review

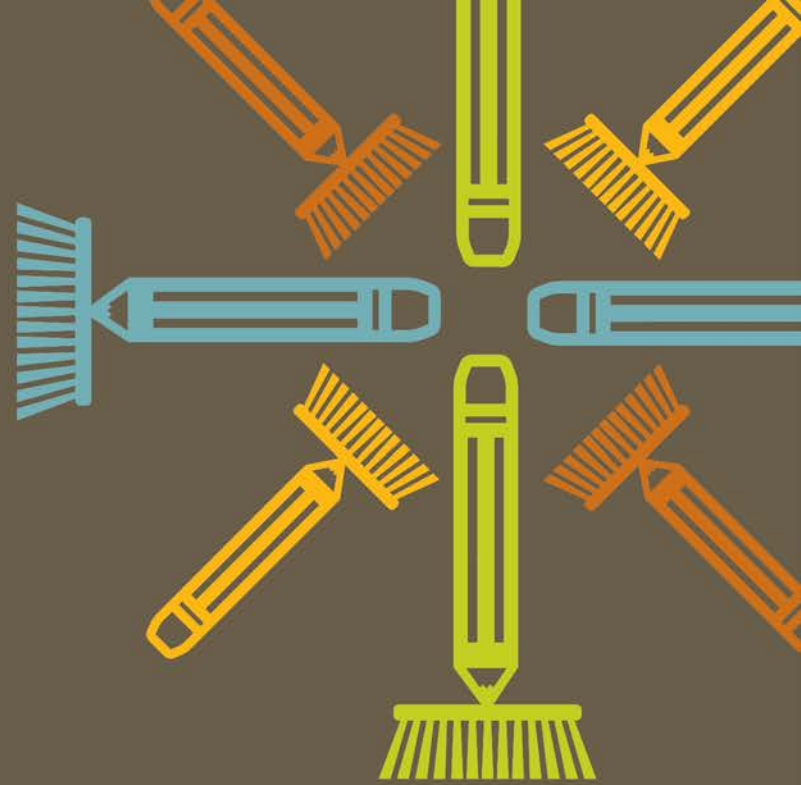
September 6, 2012



SOUTHERN
— MANAGEMENT —

keeping schools clean





Quality Control Scores

Pre-K & Elementary Schools

Santa Rosa County Schools	Score
T R JACKSON Pre-K	3
BAGDAD ELEM.	3
BENNY RUSSELL ELEM	3
BERRYHILL ELEM.	4
CHUMUCKLA ELEM.	4
EAST MILTON ELEM.	3
GULF BREEZE ELEM.	4
JAY ELEM.	3
ORIOLE BEACH ELEM.	3
PEA RIDGE ELEM.	3
RHODES ELEM.	3
WOODLAWN BEACH ELEM.	4
HOLLEY-NAVARRE PRIMARY	4
WEST NAVARRE PRIMARY	4
DIXON PRIMARY	3

Middle & Intermediate Schools

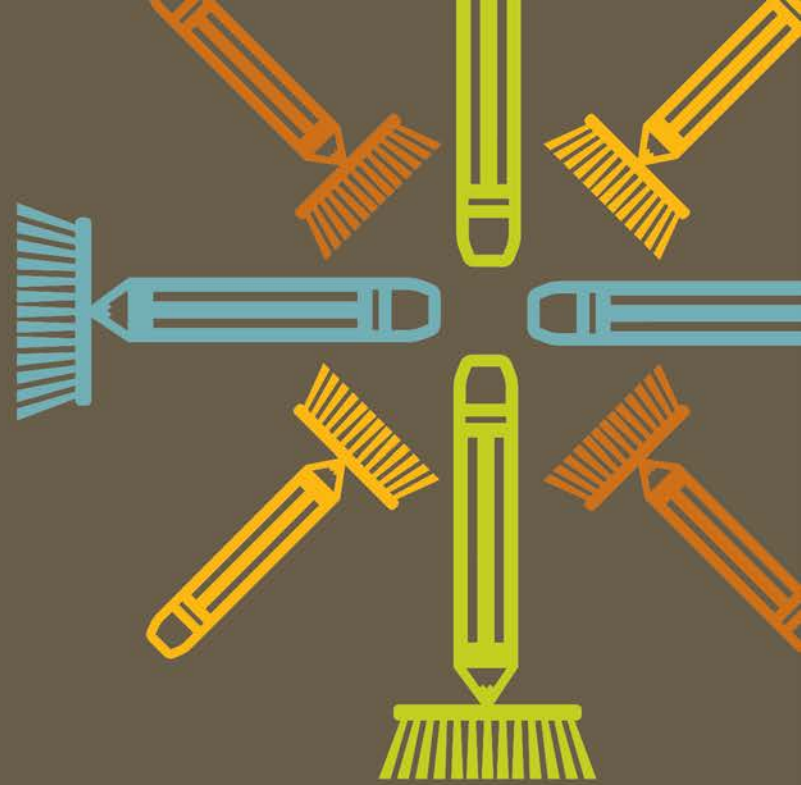
Santa Rosa County Schools	Score
GULF BREEZE MIDDLE	3
HOBBS MIDDLE	4
HOLLEY-NAVARRE MIDDLE	3
KING MIDDLE	3
SIMS MIDDLE	3
AVALON MIDDLE	3
HOLLEY-NAVARRE INTERMEDIATE	4
WEST NAVARRE INTERMEDIATE	3
DIXON INTERMEDIATE	3

Vocational & High Schools

Santa Rosa County Schools	Score
GULF BREEZE HIGH	4
JAY HIGH	3
MILTON HIGH	3
NAVARRE HIGH	3
PACE HIGH	3
CENTRAL SCHOOL	4
LOCKLIN VO-TECH	4

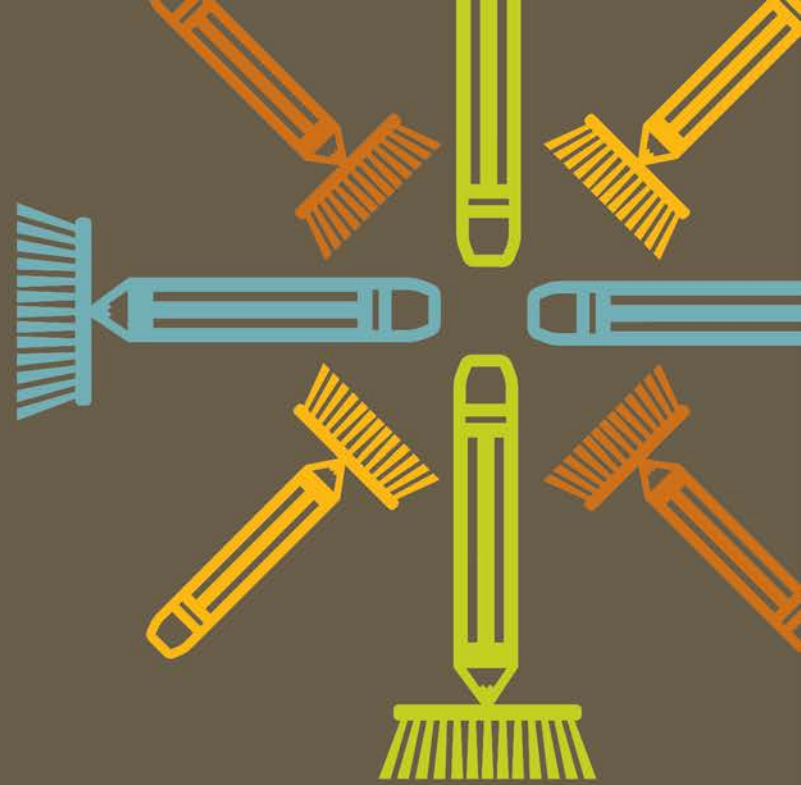
Admin & Support Services

Santa Rosa County Sites	Score
CANAL STREET ADMIN.	4
SUPPORT SERVICES	3
BERRYHILL ADMIN.	4



Summer Clean Fun Facts

- **40,000 LABOR HOURS**
- **605 GALLONS OF STRIPPER**
- **3,155 GALLONS OF WAX**
- **3,663,830 SQUARE FOOT DEEP CLEANED**



Employee's of the Quarter

Employee's of the Quarter Recognition



**Operations Manager
Marie Lee**

**South End Manager
Lonny Ennis**

**Milton/Pace Manager
David Howard**

**North End Manager
Ryne Jernigan**

Thank You

Questions/Comments