

The background is a gradient of dark blue and purple. It features several faint, white, concentric circles and arcs. A prominent circular scale is visible on the left side, with numbers ranging from 140 to 260. There are also some dashed lines and arrows scattered across the background, giving it a technical or scientific feel.

# SANTA ROSA SCHOOLS

LINKING RESIDENTIAL DEVELOPMENT AND SCHOOL CAPACITY



# Our Challenge

HOW DO WE  
BUILD THE  
COMMUNITY WE  
CAN LIVE IN ?





# Our Challenge

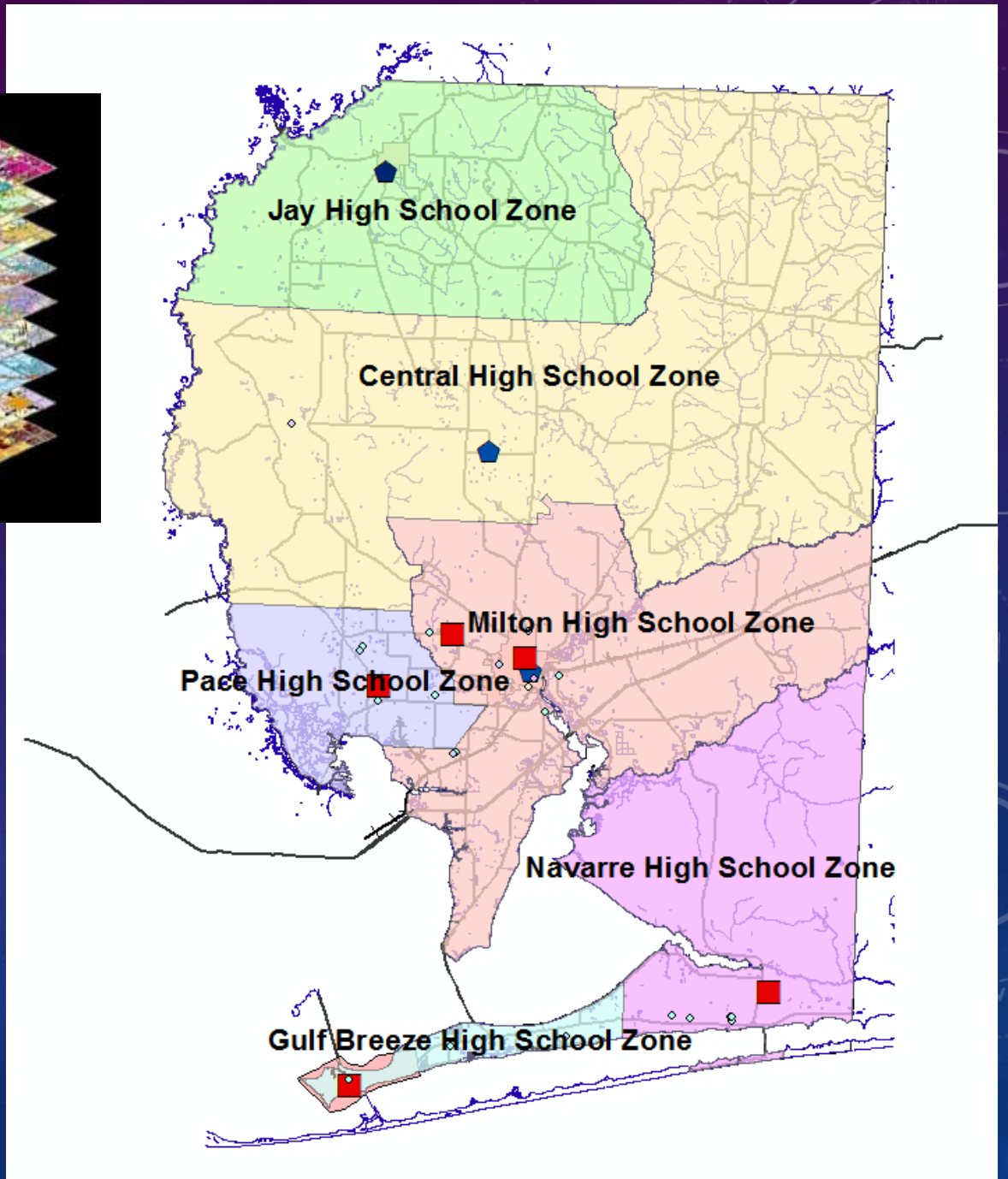
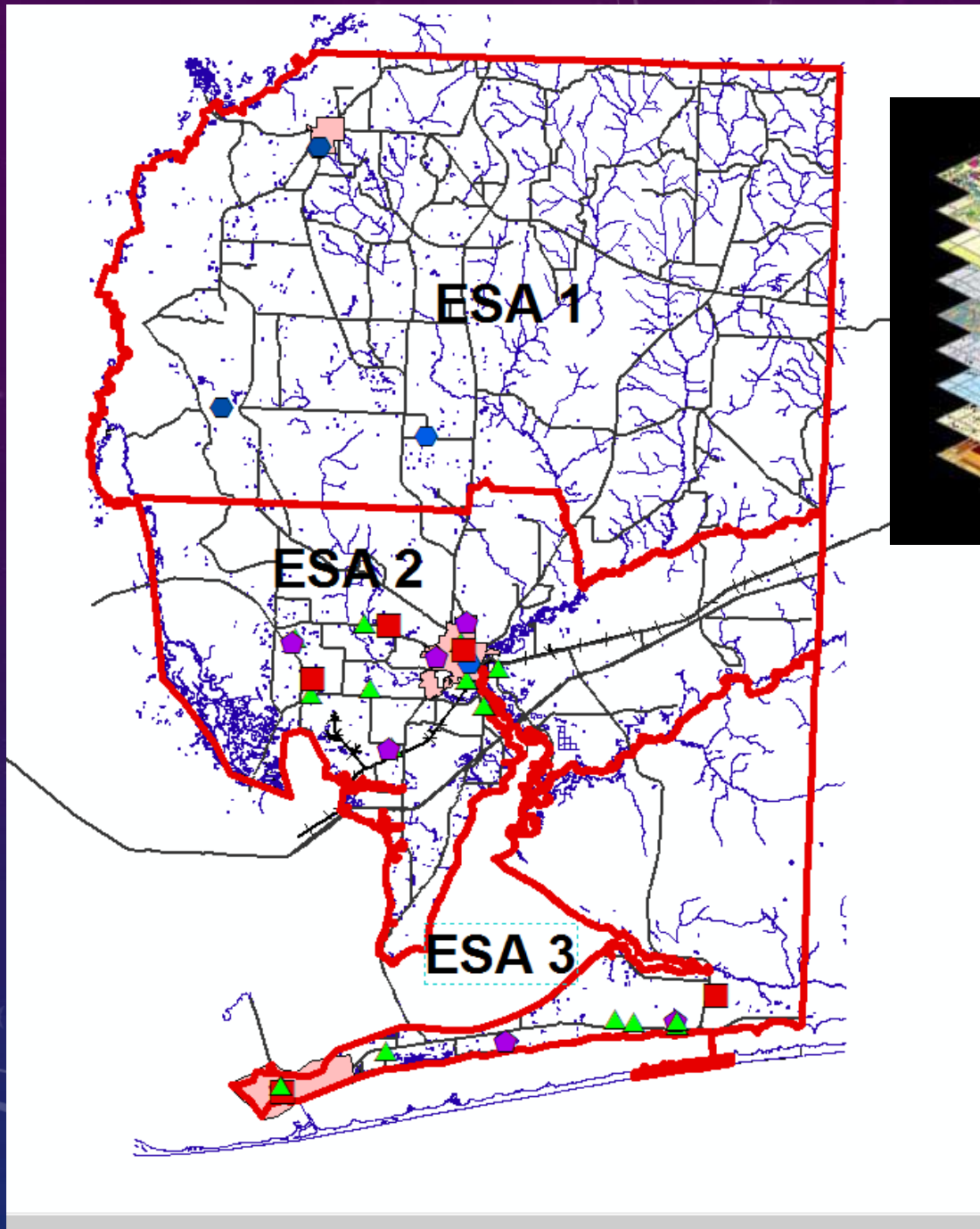


LIVE  
WORK PLAY  
LEARN





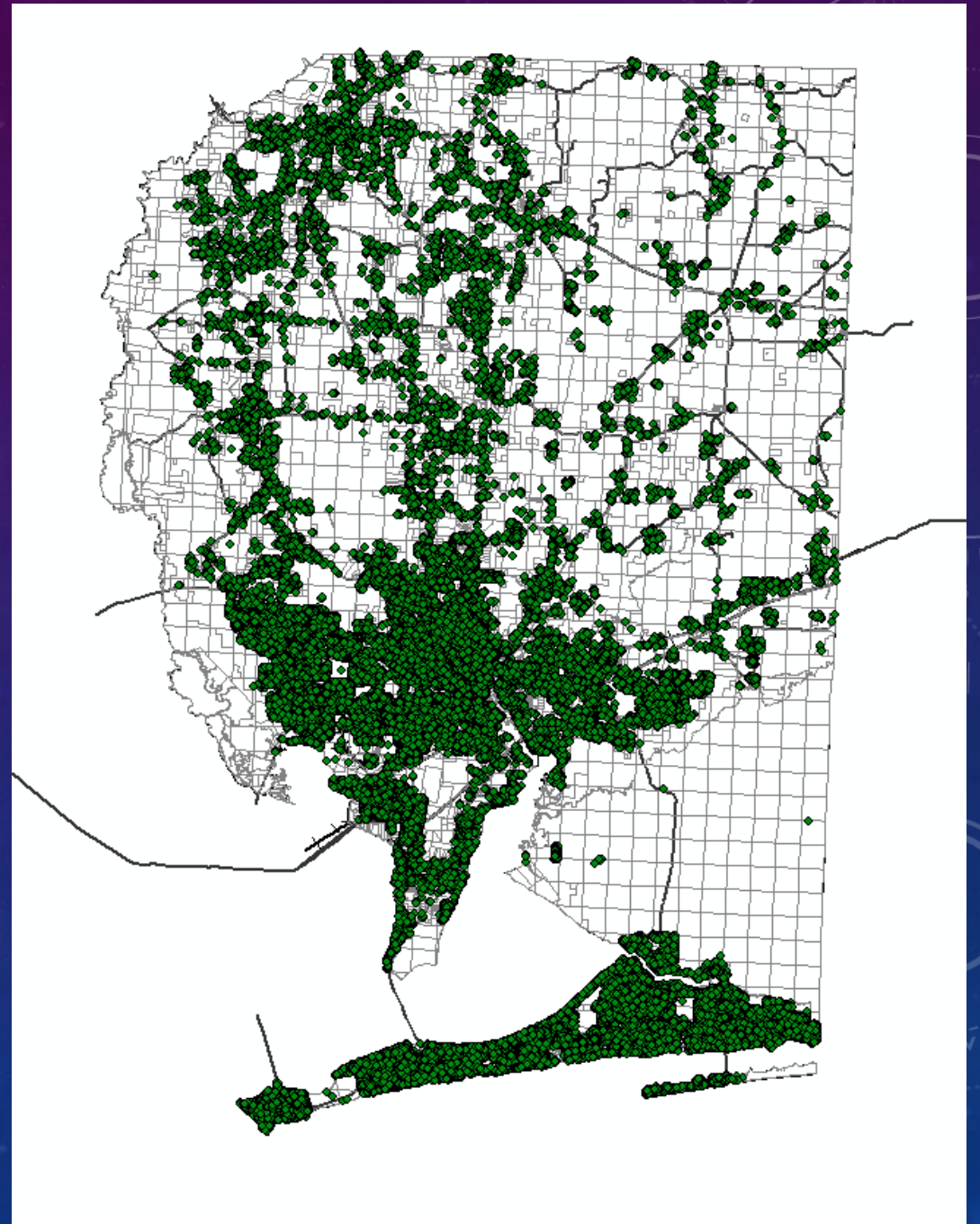






95,268 Parcels

113,084 Address Points



69,316 Dwelling Units

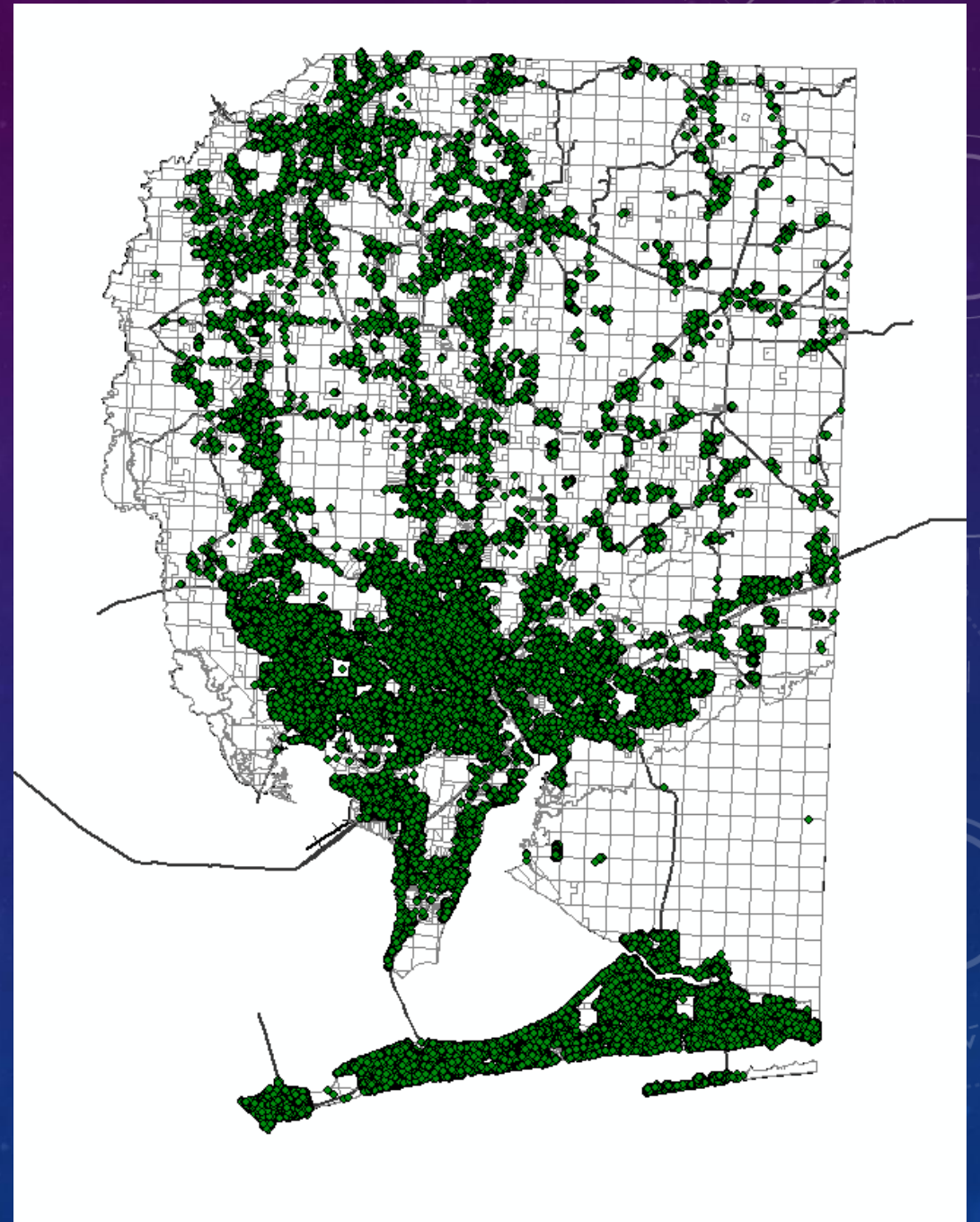
53,605 Single Family

9,066 Mobile Homes

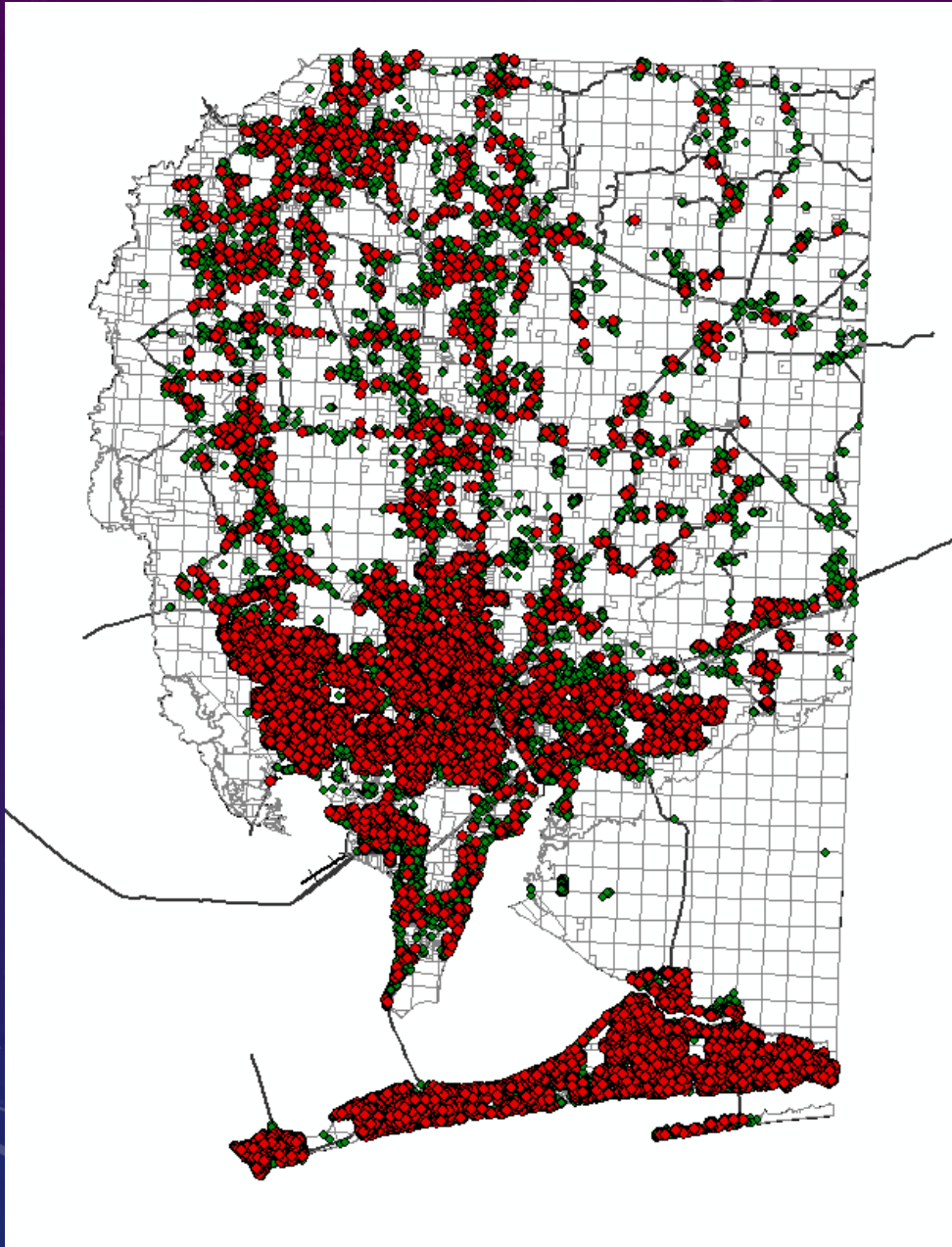
2,303 Condominium

4,342 Multi Family

Single Family / Mobile Homes  
90%







## Students

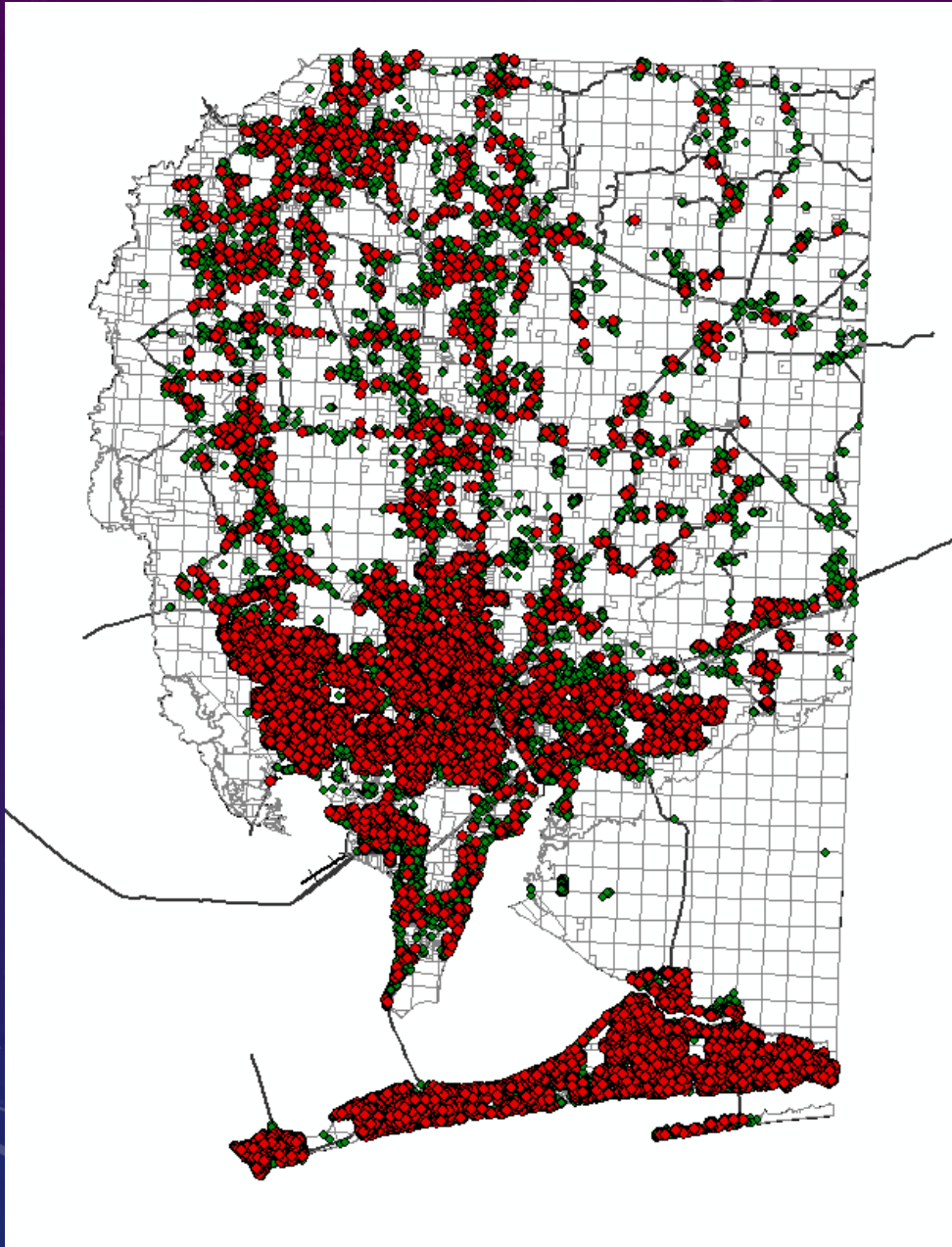
PK-5: 12,641

6-8: 6,400

9-12: 8,117

95% reside in  
Single Family / Mobile Homes





## Single Family

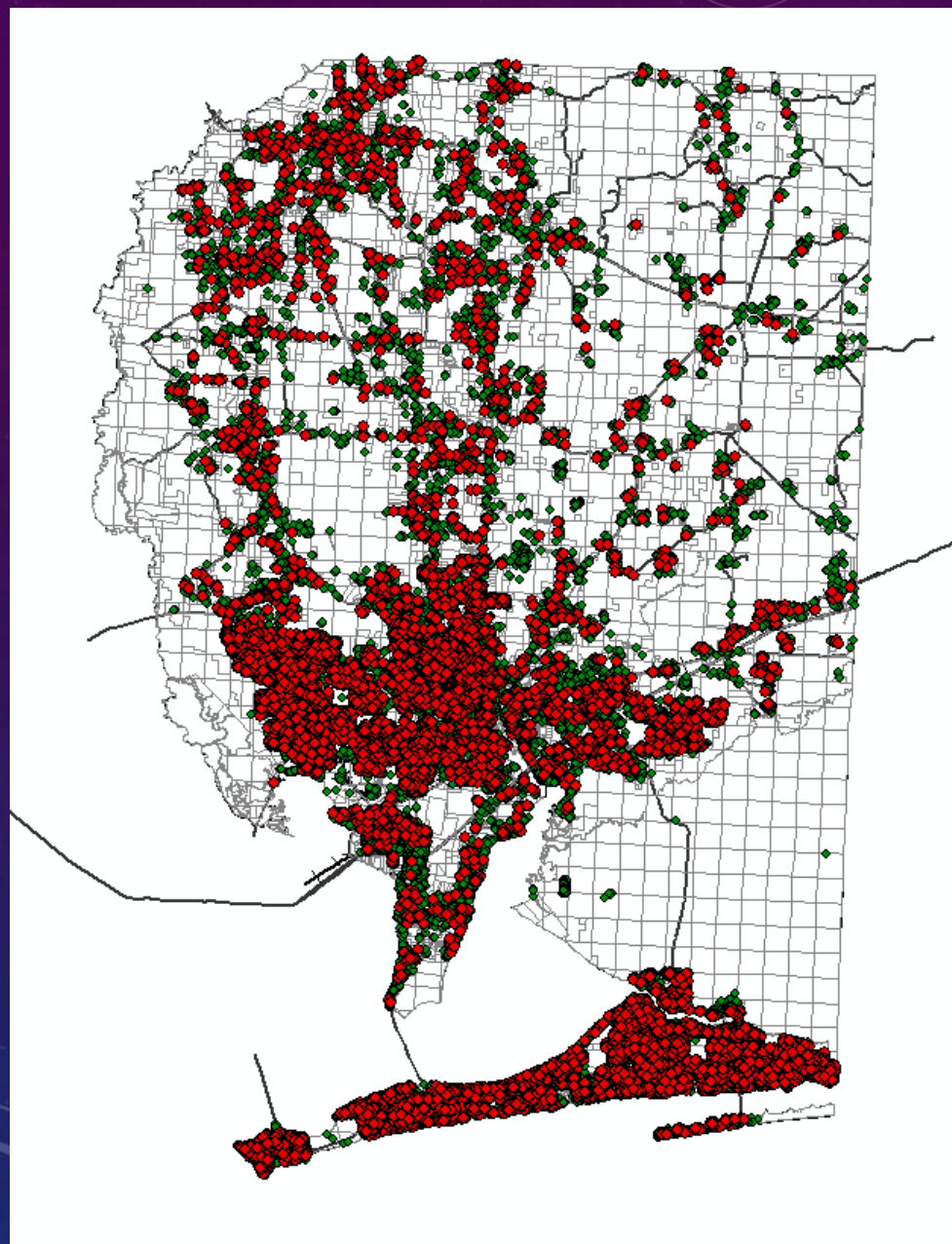
- Single Family Detached
- Mobile Homes

**100 SF = 42 Students**  
[95% of students]

## Multi – Family

- Multi Family
- Condos

**100 MF = 18 Students**  
[5% of students]



## North County

**100 SF = 40 Students**

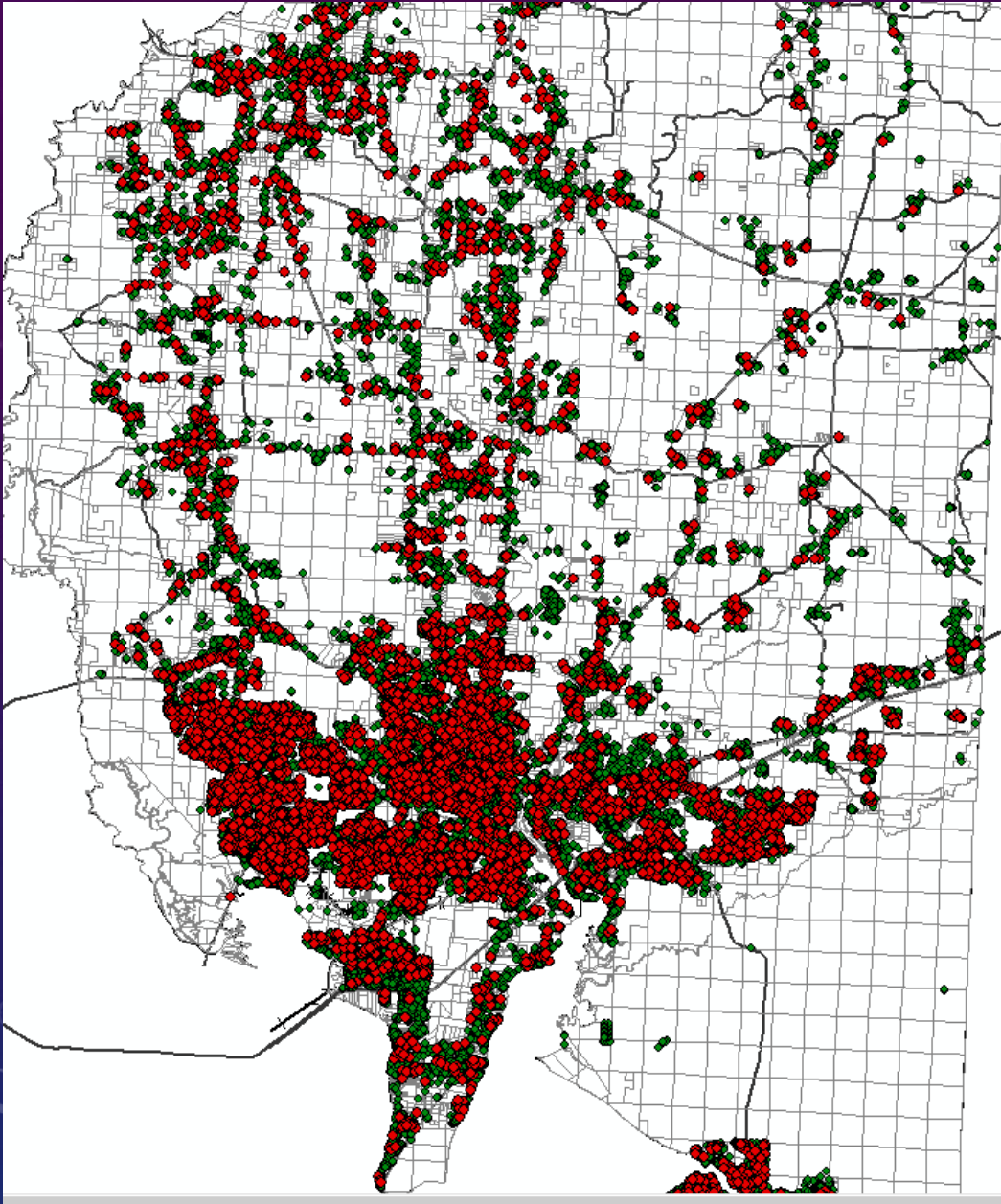
**100 MF = 30 Students**

## South County

**100 SF = 43 Students**

**100 MF = 14 Students**





## North County

100 Single Family

18 ELEM

9 MIDDLE

11 HIGH

100 Multi Family

16 ELEM

6 MIDDLE

7 HIGH



# South End

100 Single Family

100 Multi Family

19 ELEM

10 MIDDLE

14 HIGH

7 ELEM

4 MIDDLE

4 HIGH



# SANTA ROSA COUNTY SCHOOL DISTRICT TOTAL SCHOOL ENROLLMENT PROJECTIONS

- 2007 COFTE
- 2010 COFTE
- 2011 COFTE
- 2012 COFTE
- 2013 COFTE
- 2014 COFTE
- 2015 COFTE
- Actual Enroll
- CAPACITY

Total Capacity: 30,000

25,939

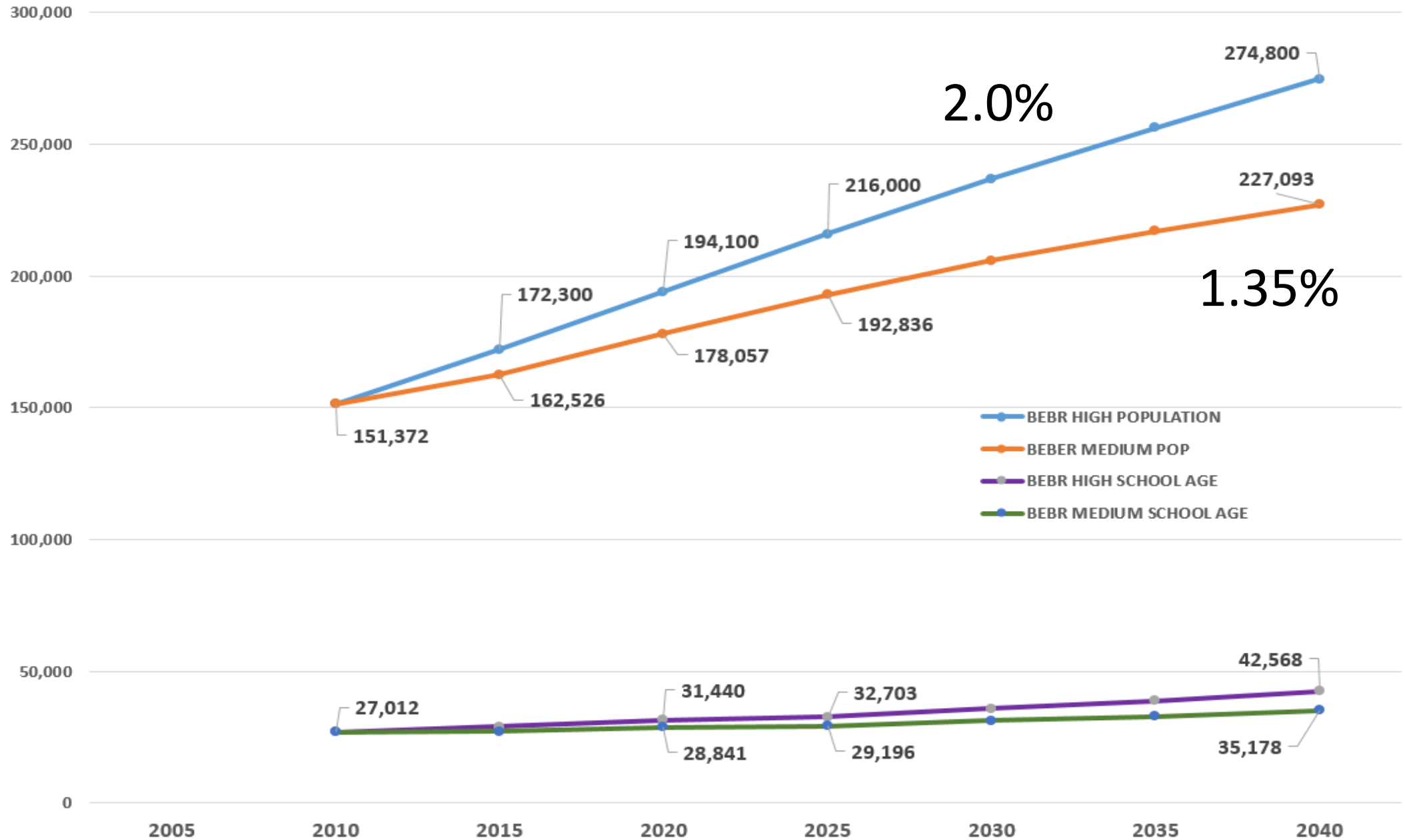
26,016

27,887

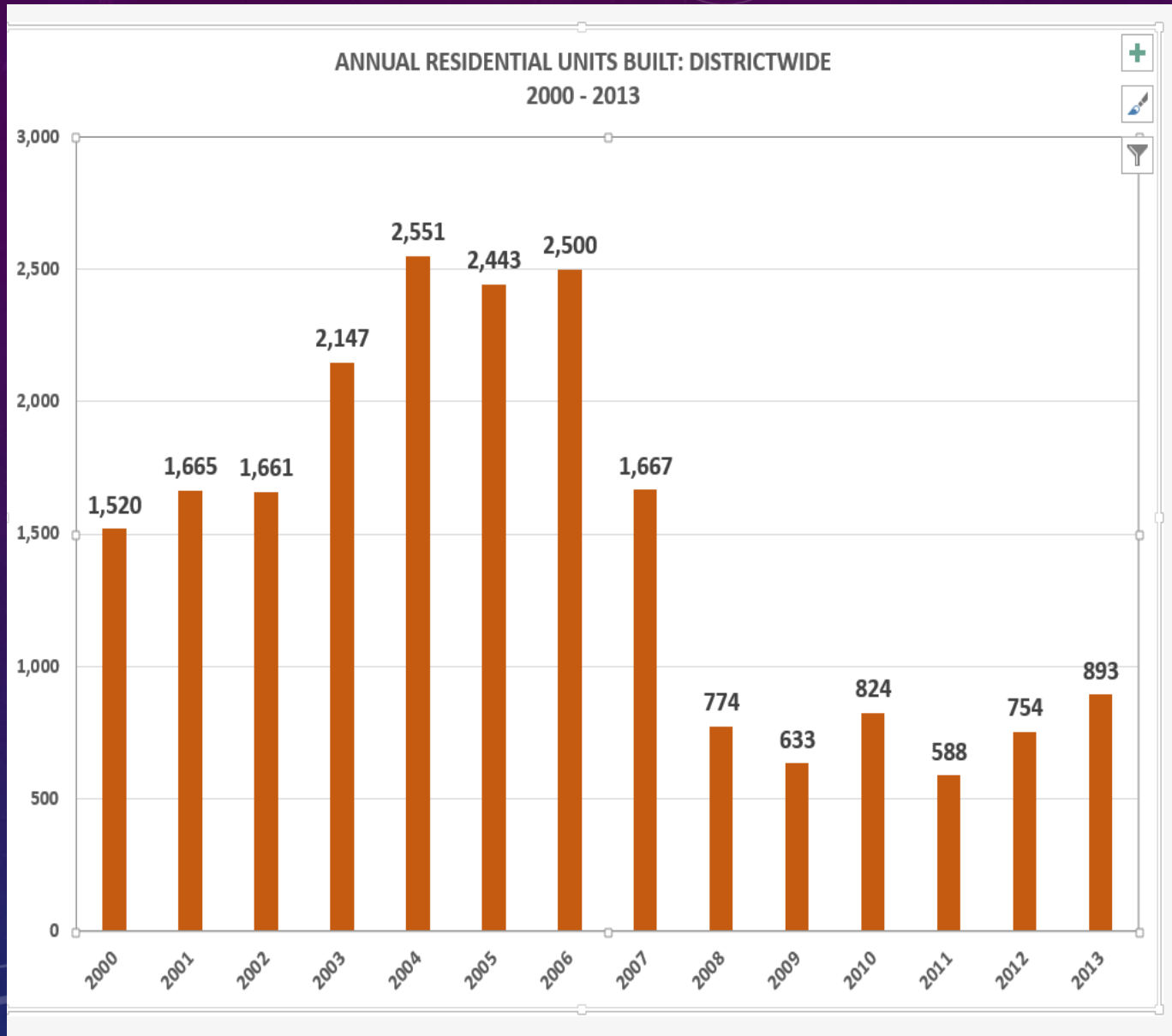
2005-2006 2006-2007 2007-2008 2008-2009 2009-2010 2010-2011 2011-2012 2012-2013 2013-2014 2014-2015 2015-2016 2016-2017 2017-2018 2018-2019 2019-2020 2020-2021 2021-2022 2022-2023 2023-2024 2024-2025



# Santa Rosa County BEBR Population / School Age Projections







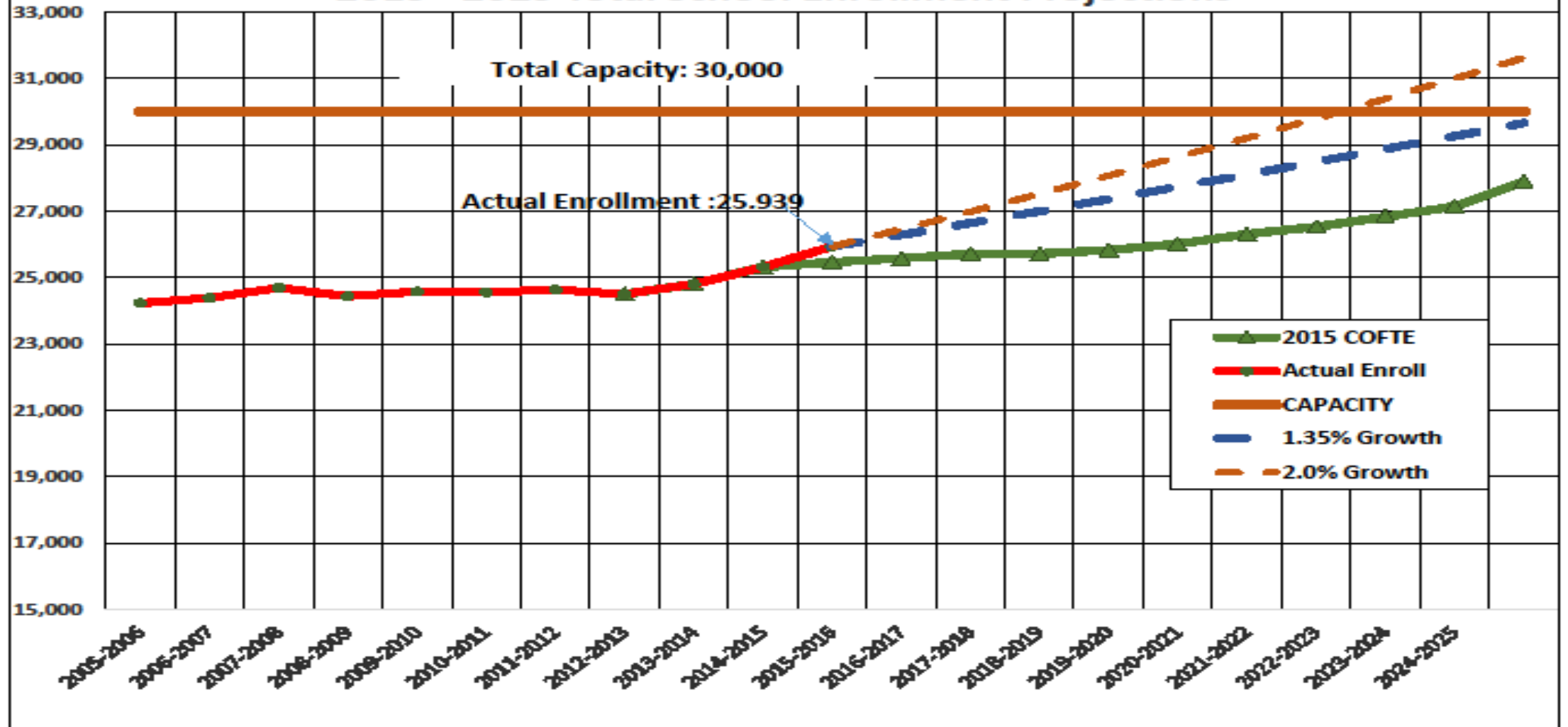
Annualized Growth Rate 2000 - 2007

4.6%

Annualized Growth Rate 2008 - 2013

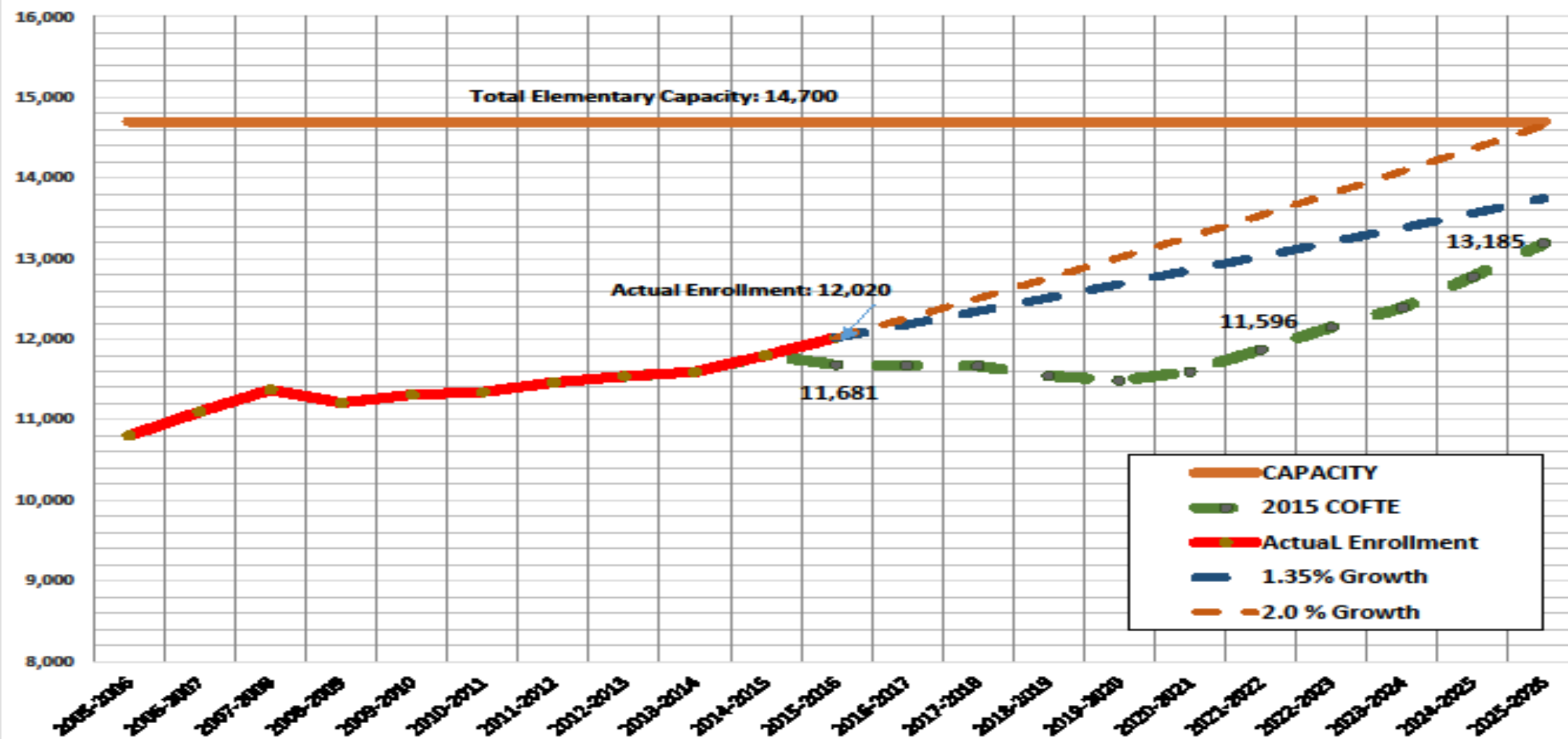
1.5%

## Santa Rosa County 2015 - 2025 Total School Enrollment Projections

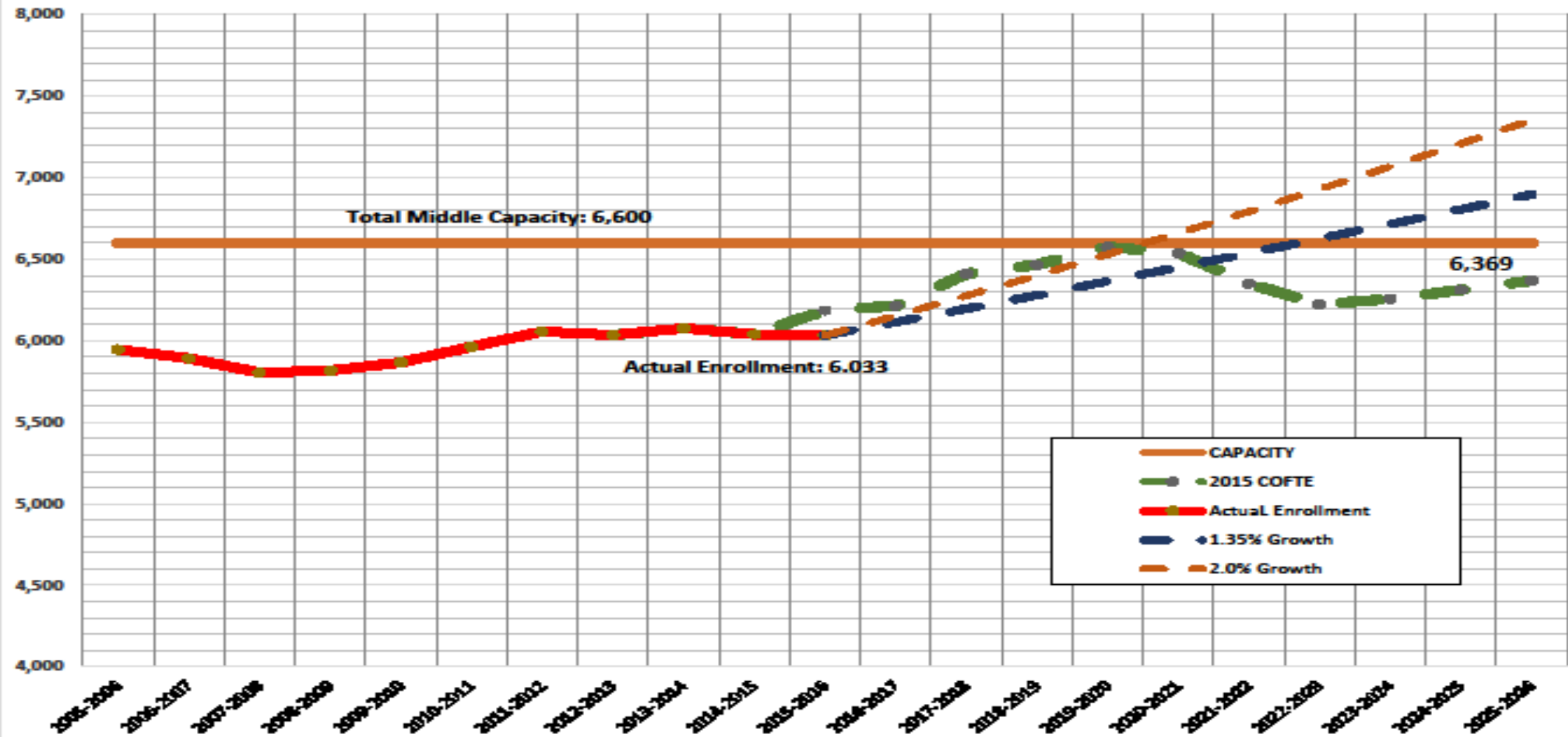




## Santa Rosa Elementary School 2015 - 2025 Enrollment Projections

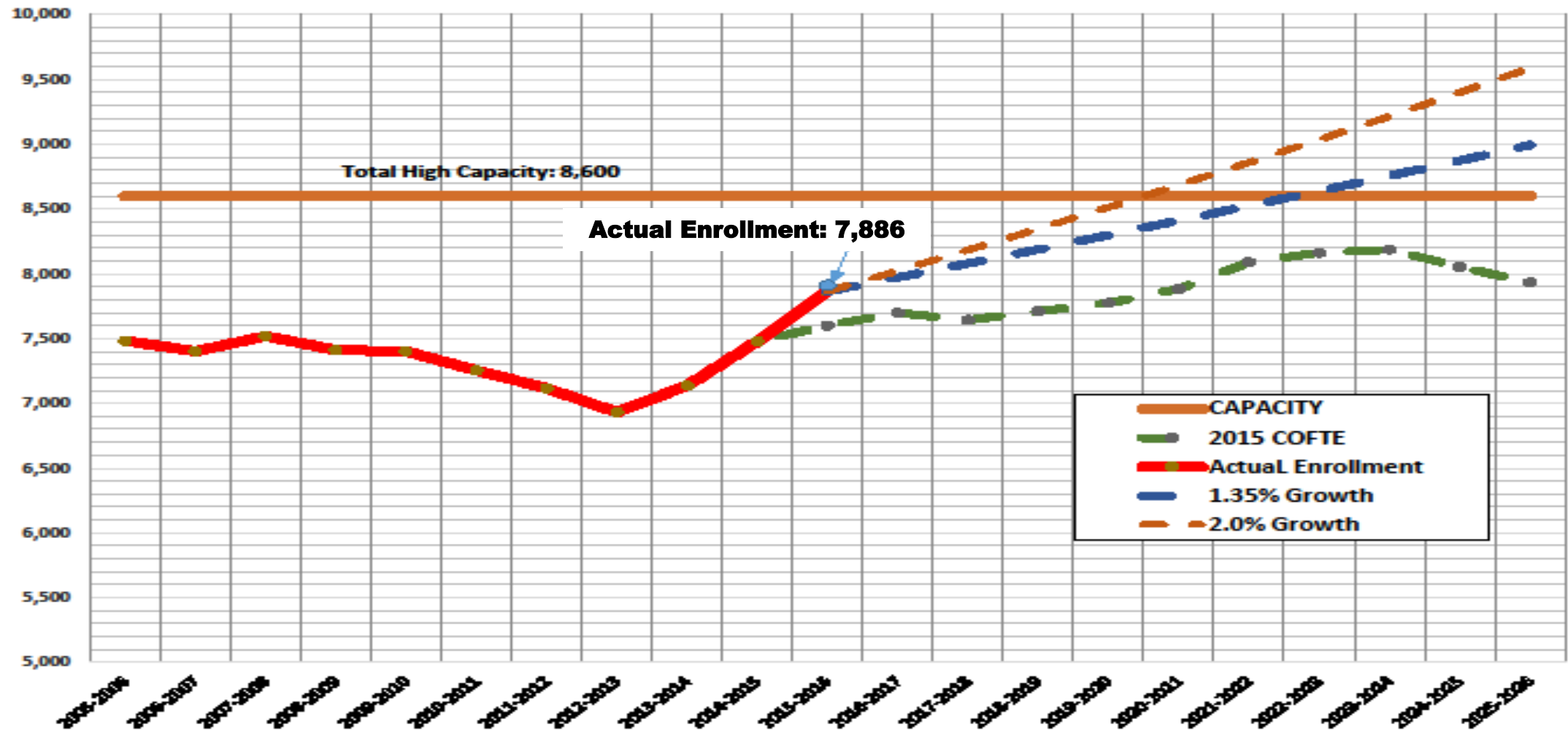


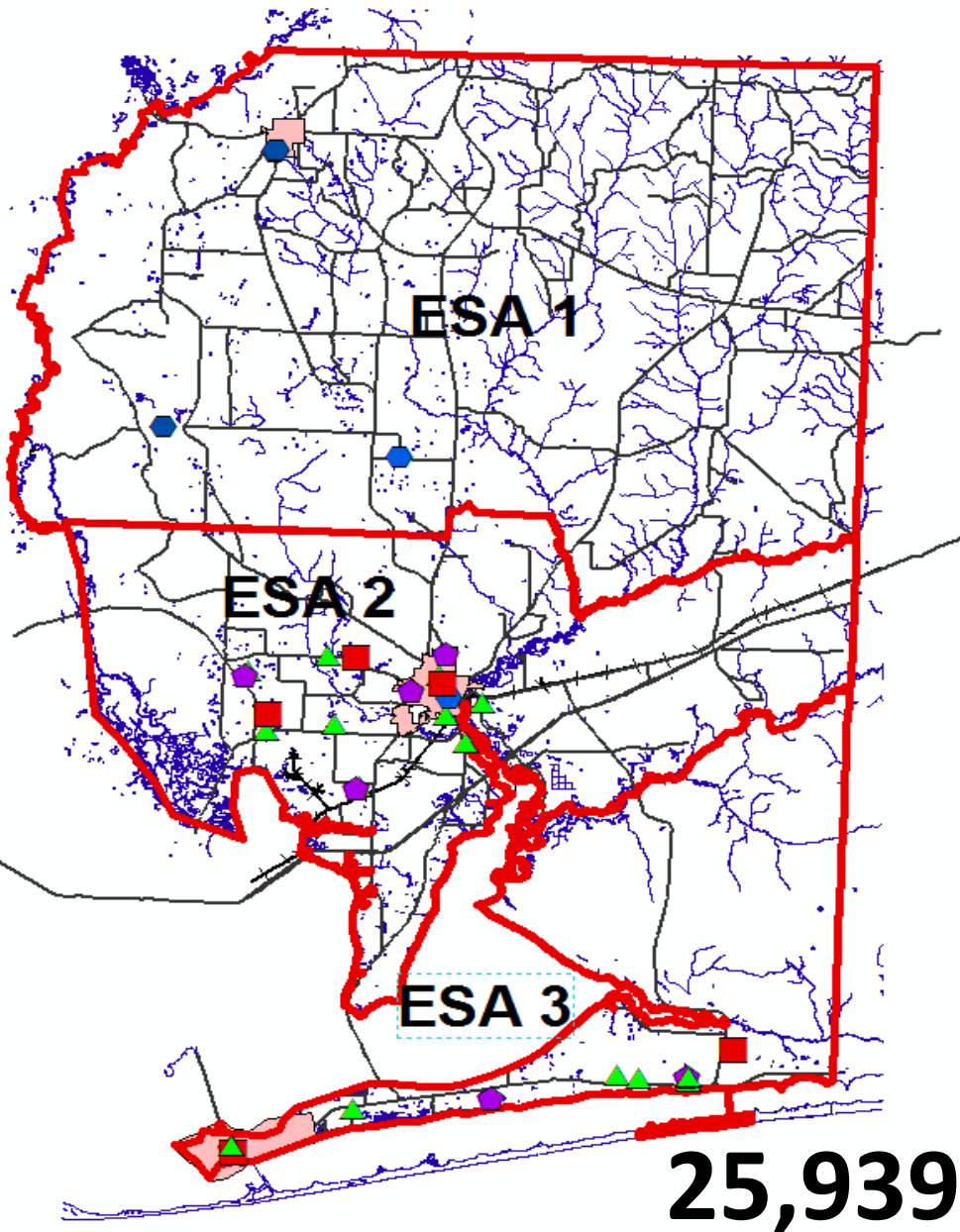
## Santa Rosa Middle School 2015 - 2025 Middle Enrollment Projections





## Santa Rosa High School 2015 - 2025 High Enrollment Projections



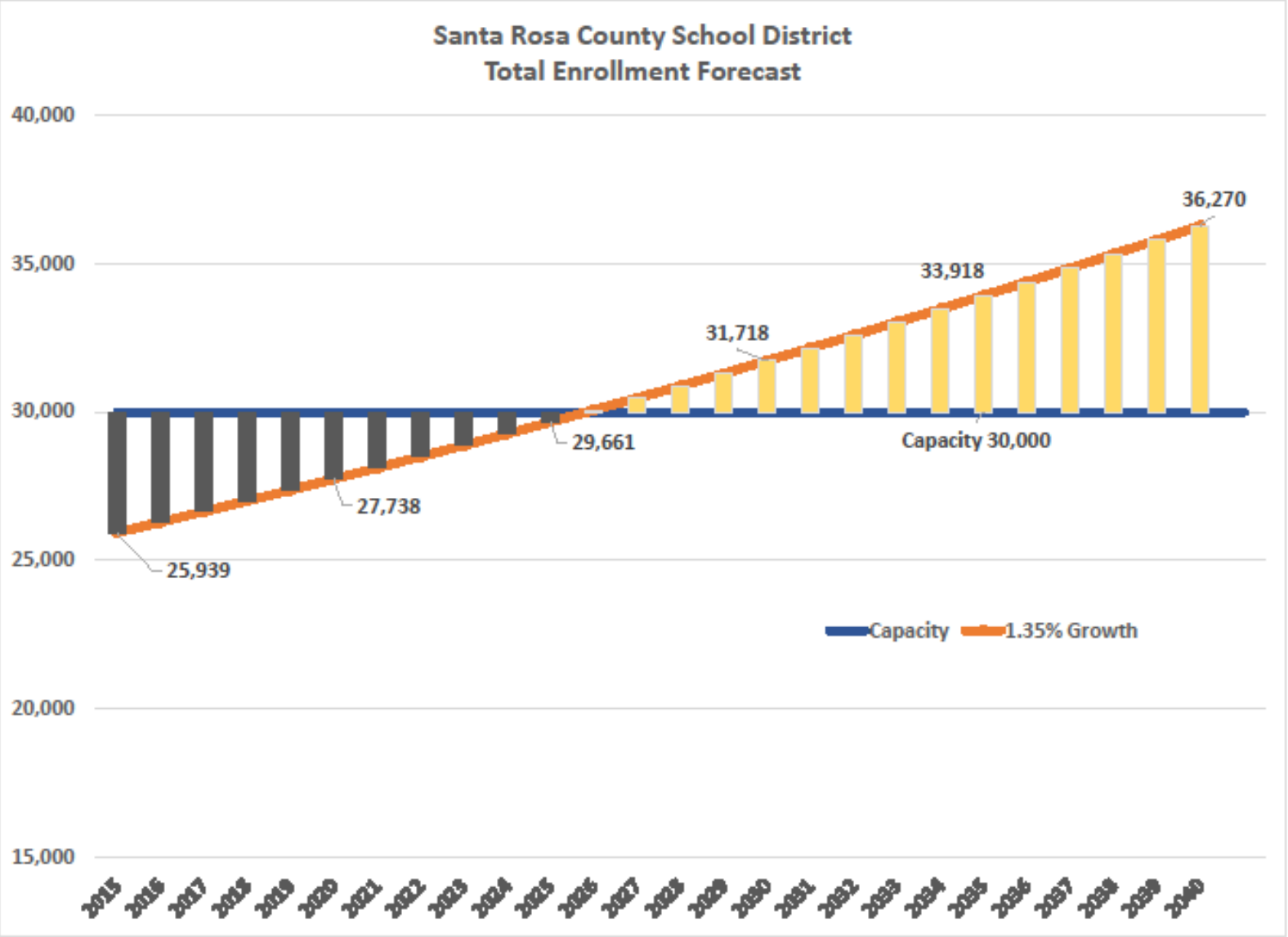


NORTH	CAPACITY	ENROLLMENT	% USE
ELEMENTARY	9,008	7,021	78%
MIDDLE	3,687	3,215	87%
HIGH	4,779	4,130	86%
TOTAL	17,474	14,416	82%

SOUTH	CAPACITY	ENROLLMENT	% USE
ELEMENTARY	5,652	4,999	88%
MIDDLE	2,896	2,818	98%
HIGH	3,817	3,706	97%
TOTAL	12,365	11,523	93%

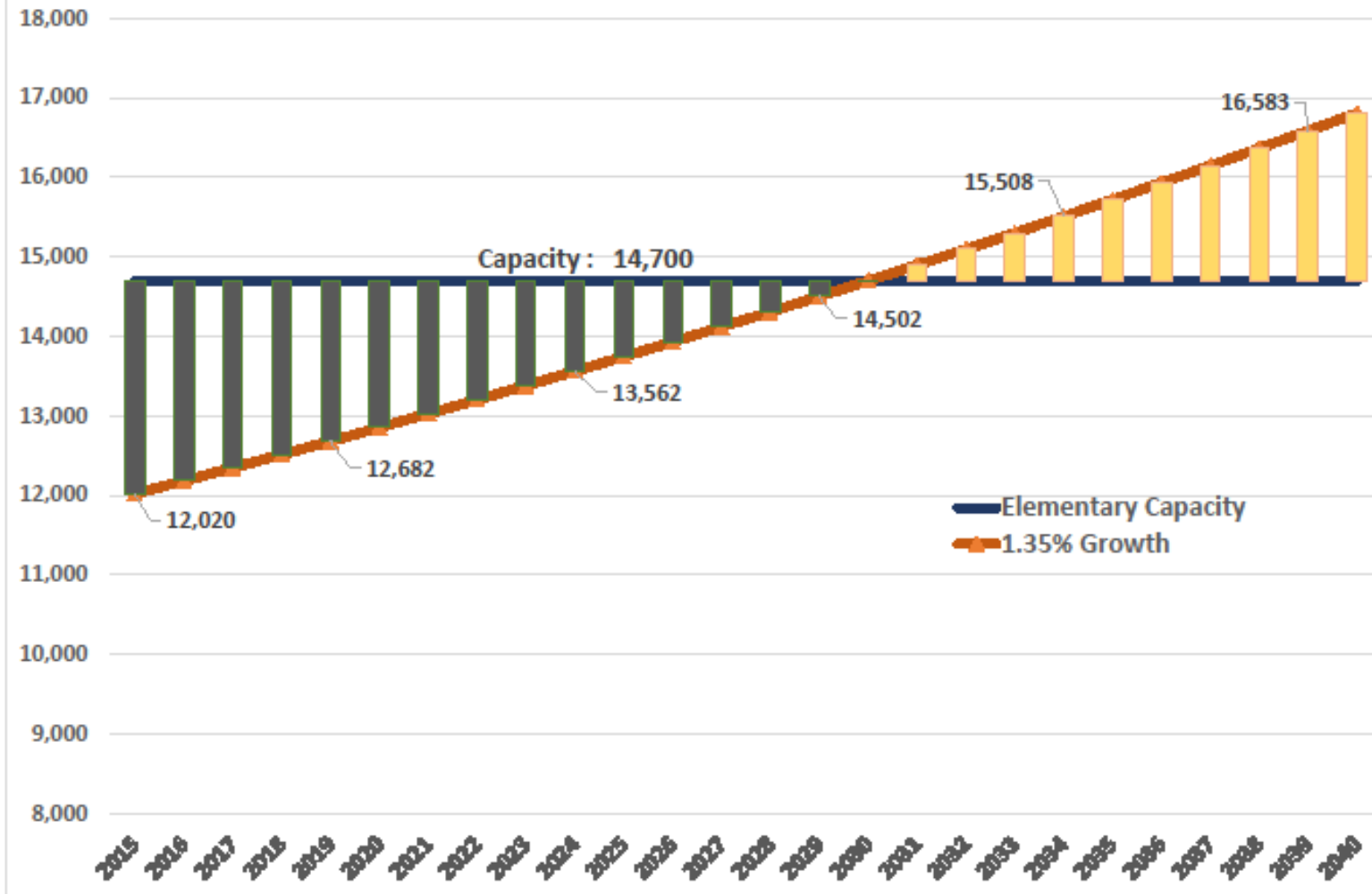
TOTAL	CAPACITY	ENROLLMENT	% USE
ELEMENTARY	14,660	12,020	82%
MIDDLE	6,583	6,033	92%
HIGH	8,596	7,886	92%
TOTAL	29,839	25,939	87%





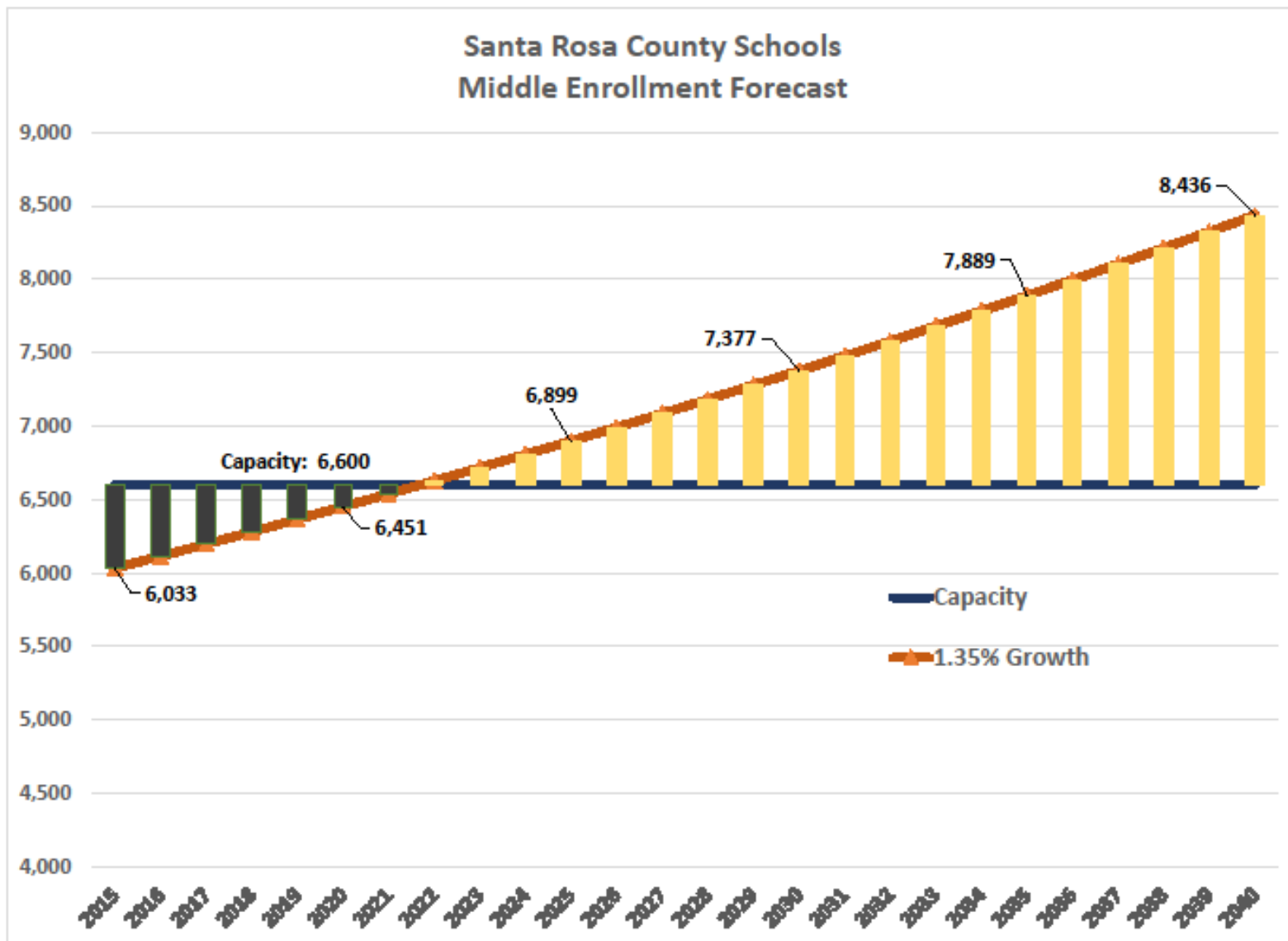
CAPACITY	30,000
2015	4,060
2020	2,260
2025	340
2030	-1,720
2035	-3,920
2040	-6,270

## Santa Rosa County Schools Elementary Enrollment Forecast

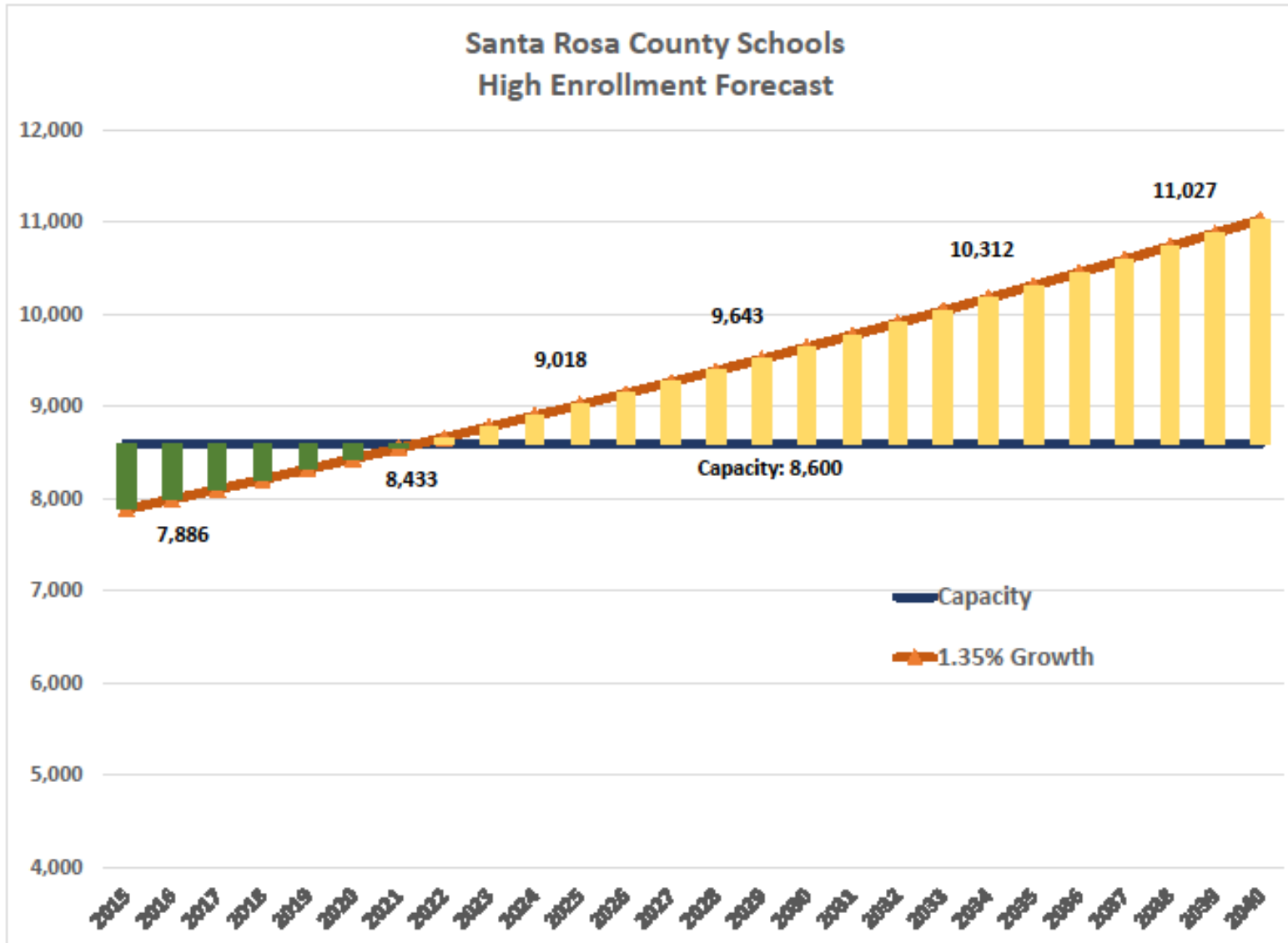


CAPACITY	14,700
2015	2,680
2020	2,020
2025	1,140
2030	200
2035	-800
2040	-1,900



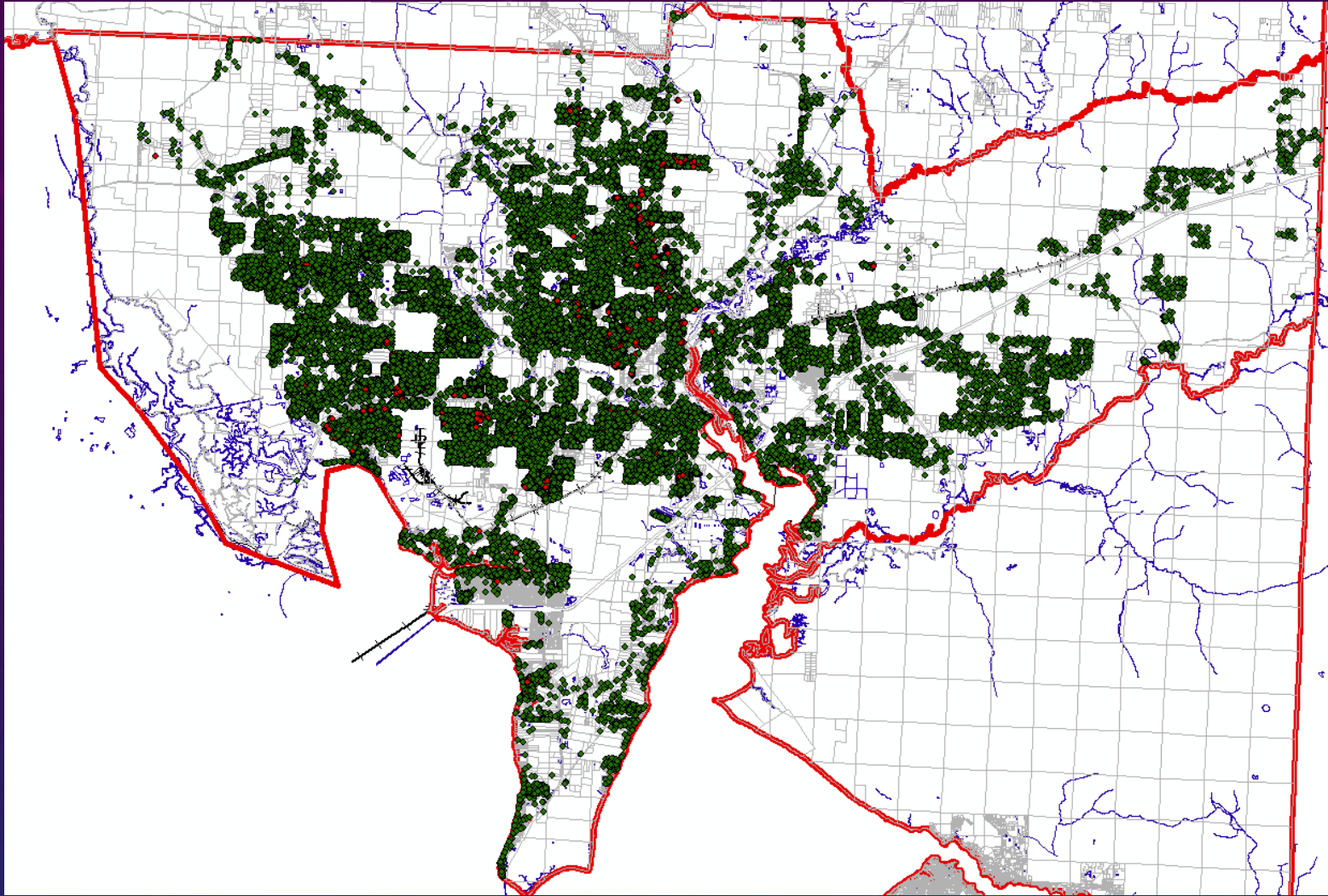


CAPACITY	6,600
2015	600
2020	150
2025	-300
2030	-800
2035	-1,300
2040	-1,800



CAPACITY	6,600
2015	700
2020	150
2025	-400
2030	-1,000
2035	-1,700
2040	-2,400





## NORTH COUNTY

Existing Dwelling Units: 39,390

Single Family: 37,345

Multi Family: 2,245

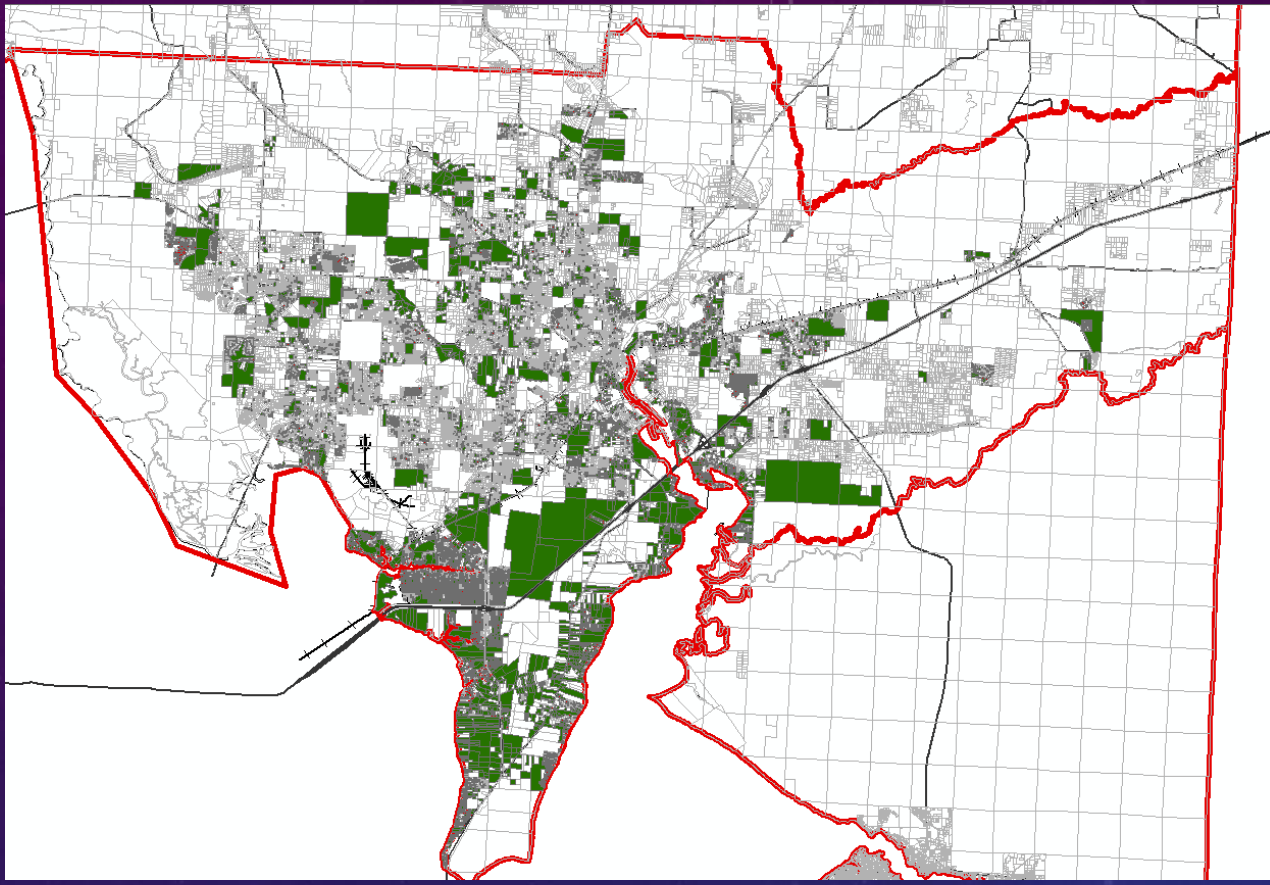
## STUDENTS RESIDING

Elementary: 7,375

Middle: 3,518

High: 4,375

Total: 15,268



## DEVELOPMENT POTENTIAL

Infill: 10,062

Developable SF: 47,783

Developable MF: 12,524

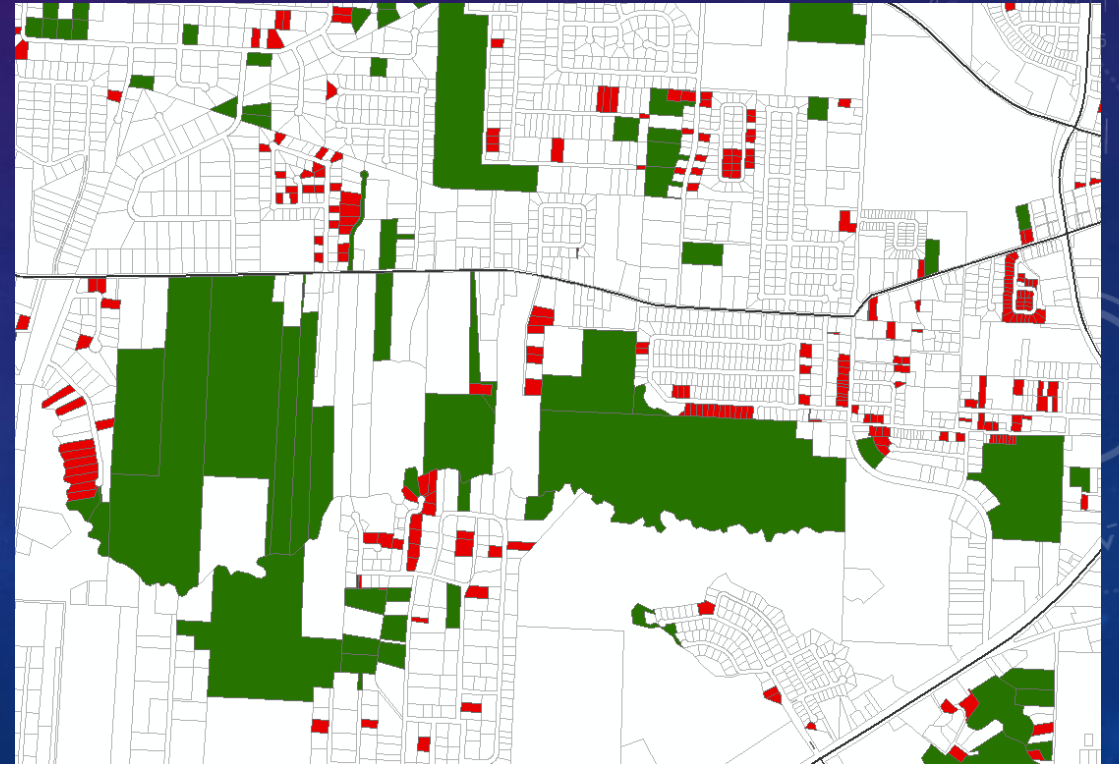
## STUDENTS @ MAX BUILDOUT

Elementary: 19,000

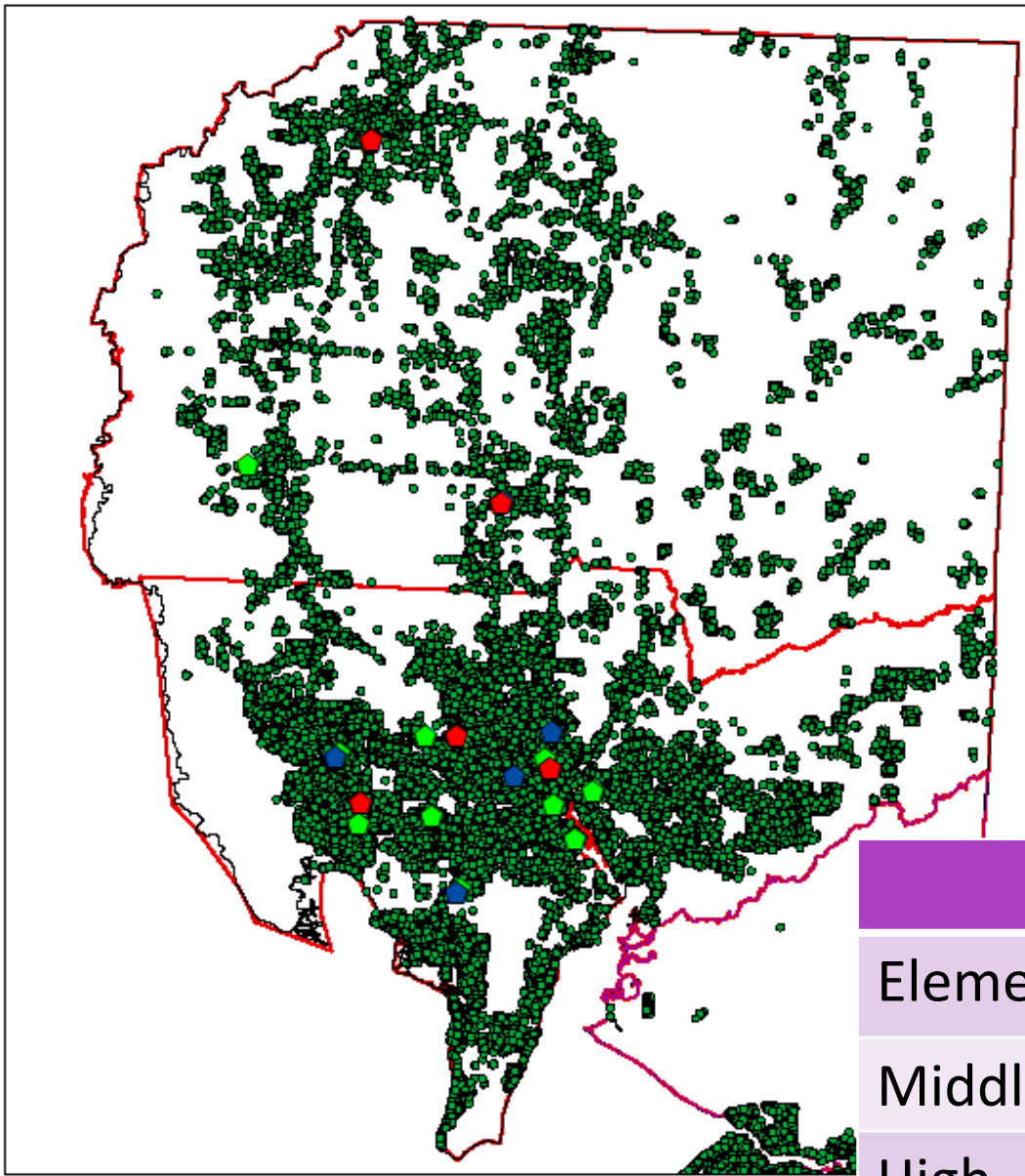
Middle: 9,000

High: 11,000

Total: 39,000



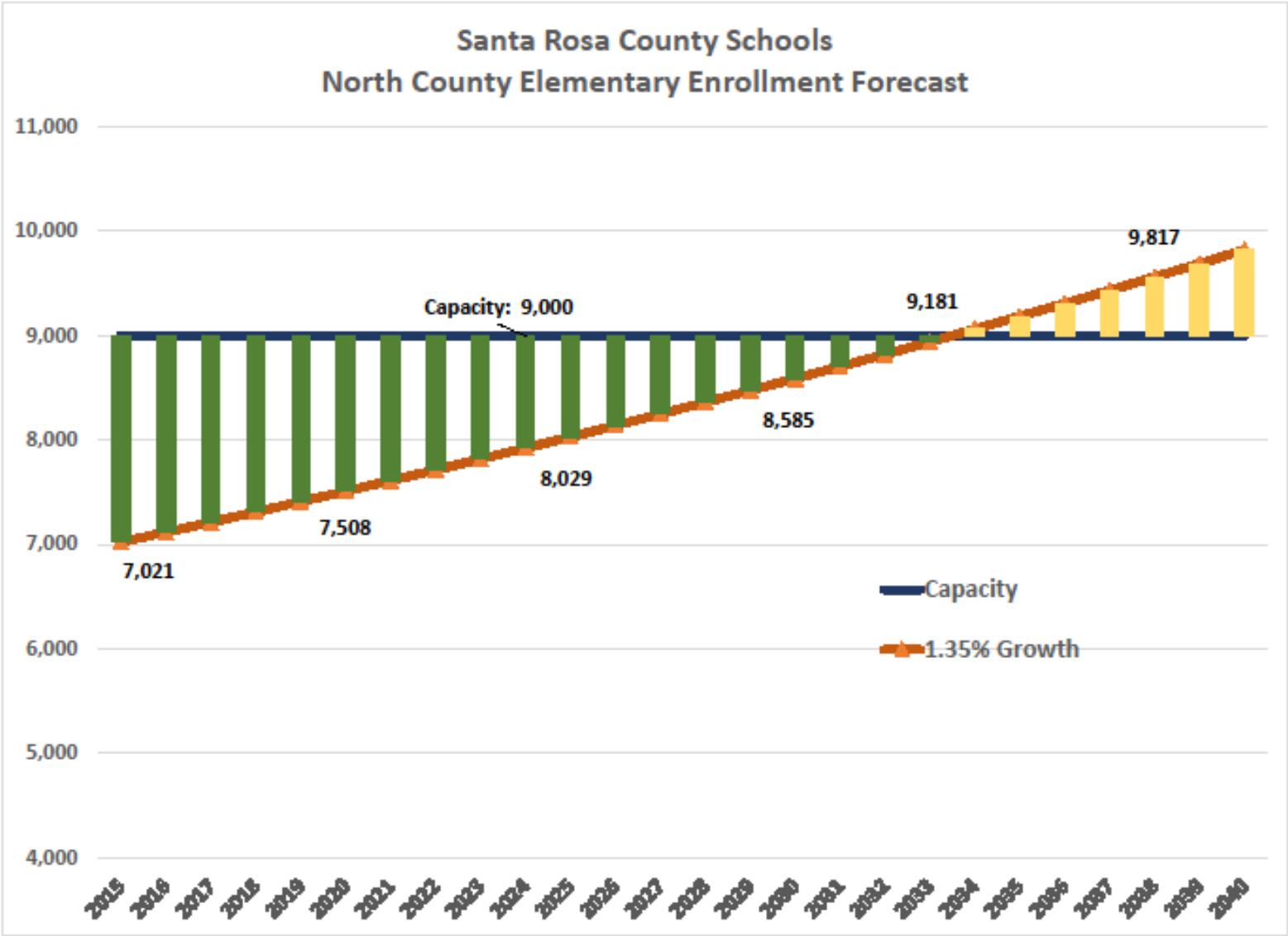




# NORTH COUNTY

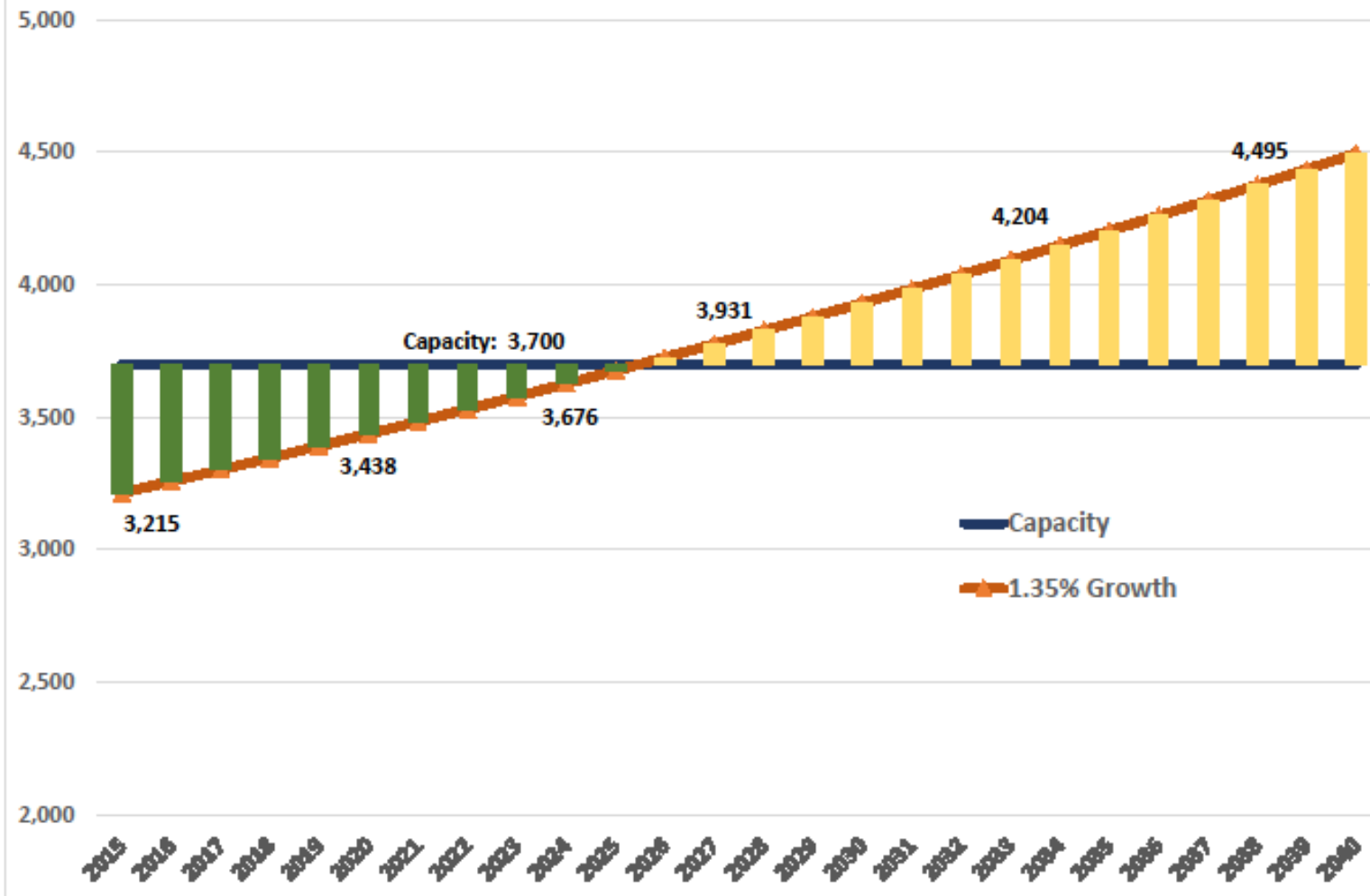
	CAPACITY	ENROLLMENT	% USE
Elementary	9,008	7,021	78%
Middle	3,687	3,215	87%
High	4,779	4,180	87%
Total	17,474	14,416	82%





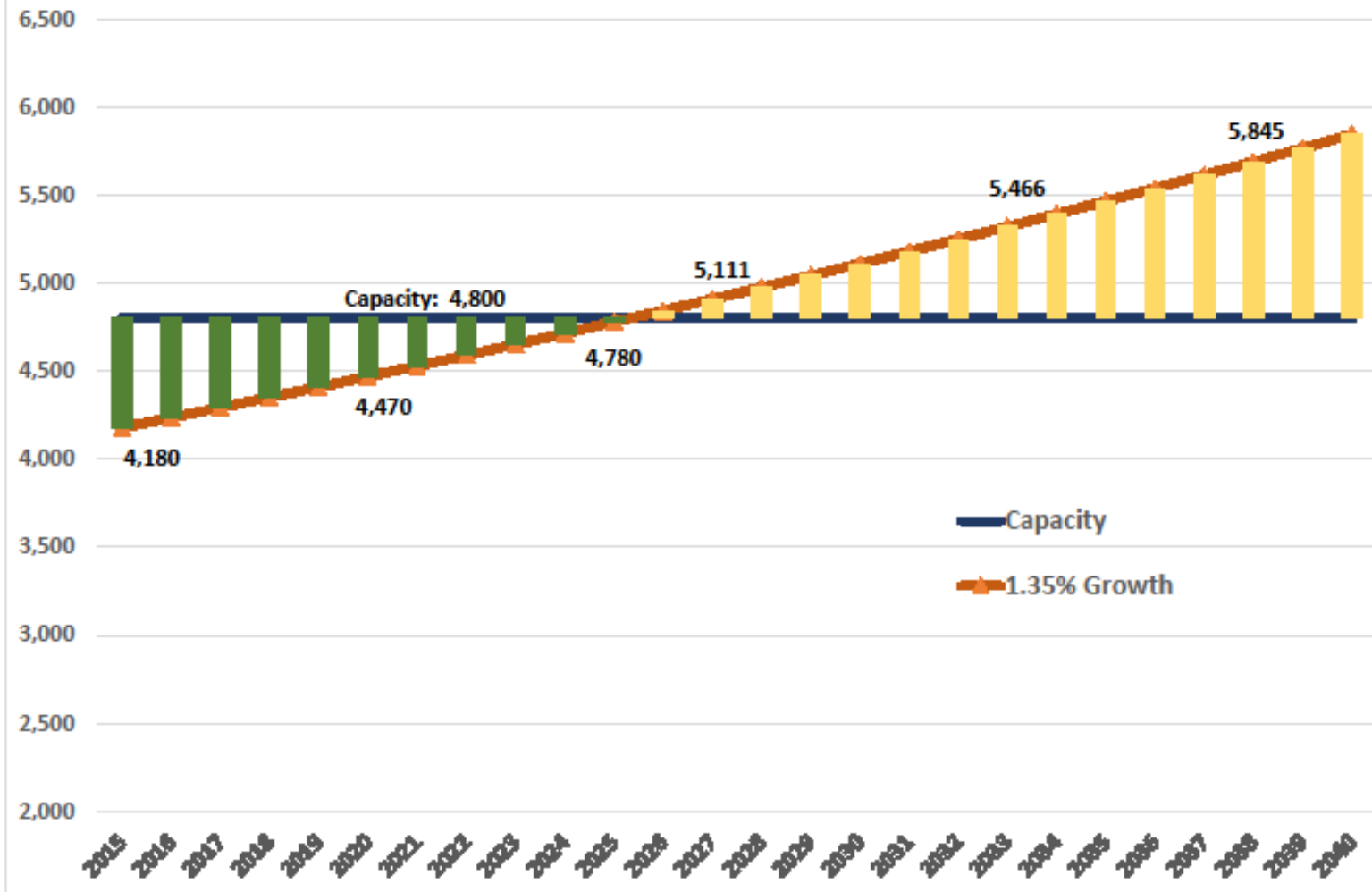
CAPACITY	9,000
2015	2,000
2020	1,500
2025	1,000
2030	500
2035	-200
2040	-800

# Santa Rosa County Schools North County Middle Enrollment Forecast



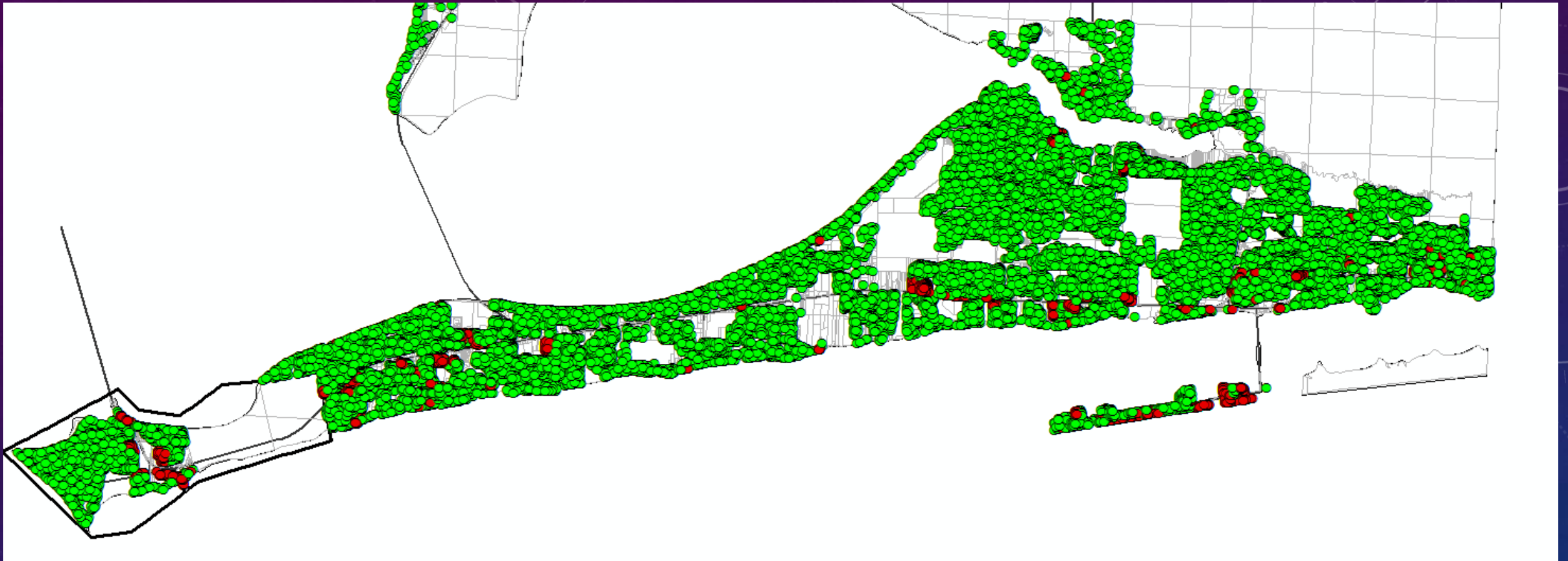
CAPACITY	3,700
2015	500
2020	300
2025	0
2030	-200
2035	-500
2040	-800

## Santa Rosa County Schools North County High Enrollment Forecast



CAPACITY	4,800
2015	600
2020	300
2025	0
2030	-300
2035	-700
2040	-1,000





## ESA SOUTH

Existing Dwelling Units: 29,926

Single Family: 25,526

Multi Family: 4,400

## STUDENTS RESIDING

Elementary: 5,049

Middle: 2,737

High: 3,351

Total: 11,137

## DEVELOPMENT POTENTIAL

Infill: 6,090 SF

Developable Dwelling Units: 13,200



## STUDENTS @ MAX BUILDOUT

Elementary: 8,200

Middle: 4,400

High: 5,200

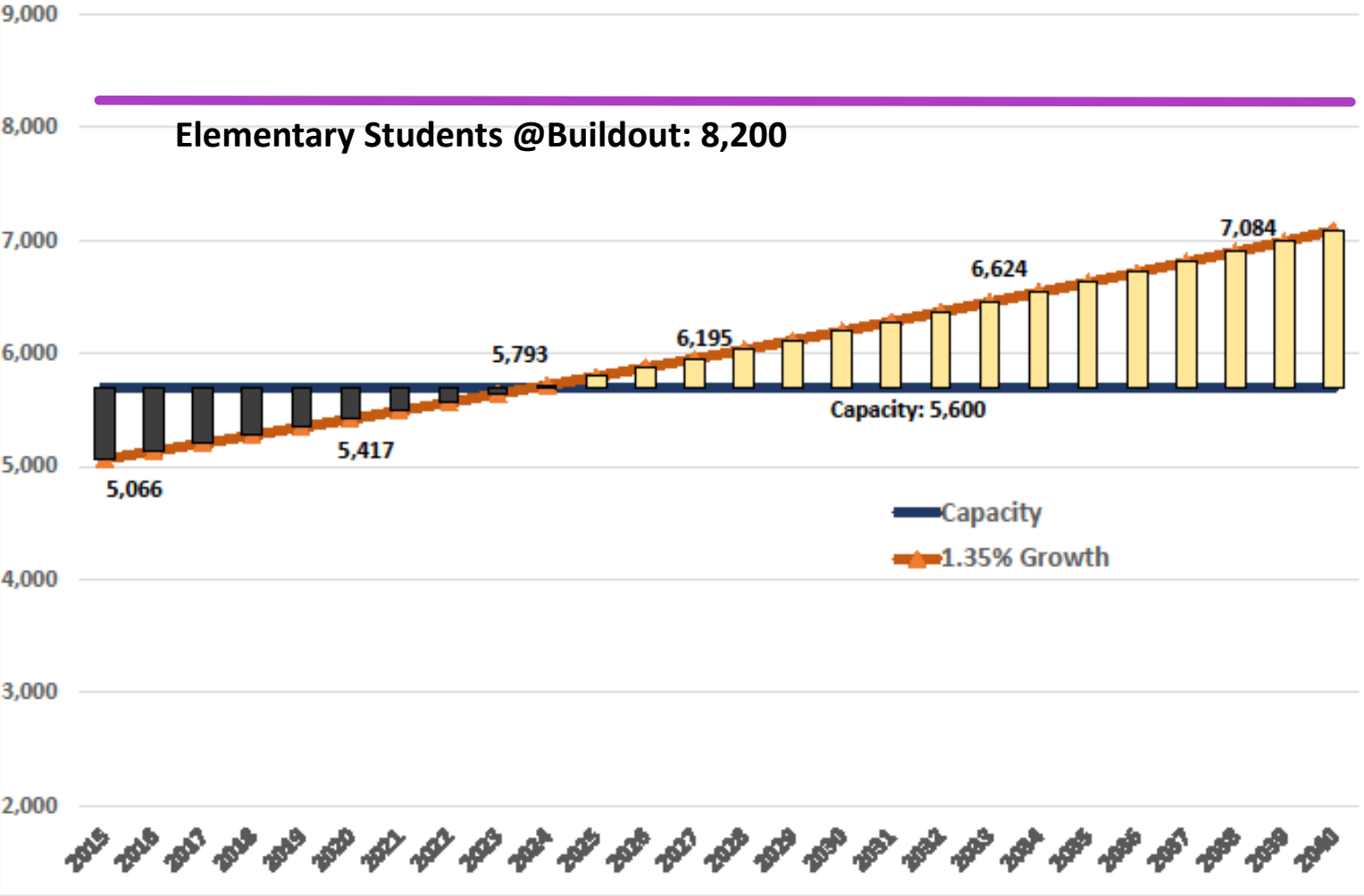
Total: 17,800



ELEM	CAPACITY	ENROLLMENT	% USE
Gulf Breeze	913	720	79%
Oriole Beach	846	811	96%
Holley Navarre	1,858	1,665	90%
West Navarre	2,034	1,870	92%
ESA Total	5,651	5,066	90%



Santa Rosa County Schools  
South End Elementary Enrollment Forecast



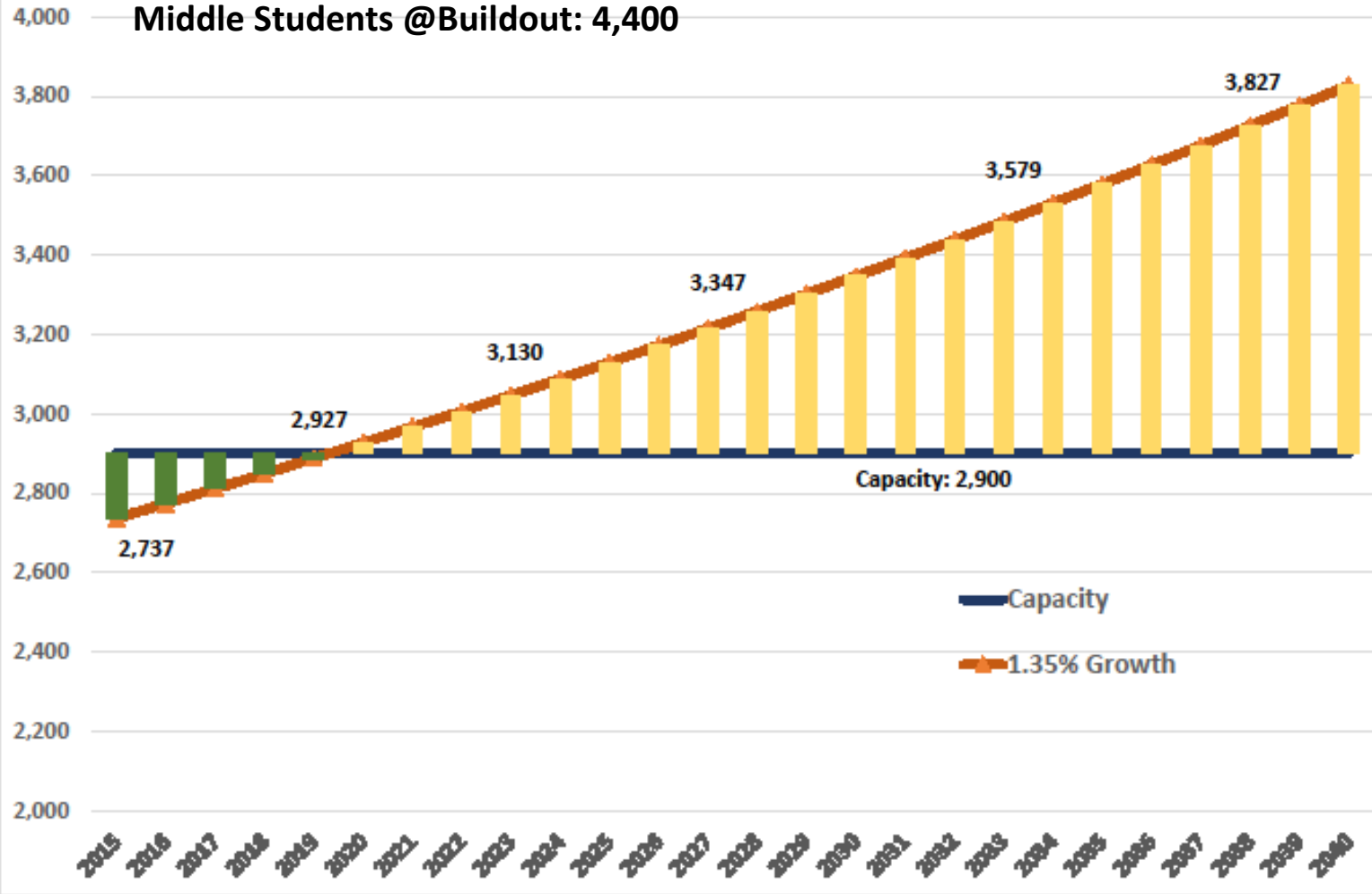
CAPACITY	4,800
2015	600
2020	200
2025	-200
2030	-600
2035	-1,000
2040	-1,500



MIDDLE	CAPACITY	ENROLLMENT	% USE
Gulf Breeze	942	883	94%
Holley Navarre	895	843	94%
Woodlawn Beach	1,058	1,011	96%
ESA Total	2,895	2,737	95%

# Santa Rosa County Schools South End Middle Enrollment Forecast

Middle Students @Buildout: 4,400



CAPACITY	4,800
2015	150
2020	0
2025	-200
2030	-400
2035	-700
2040	-900

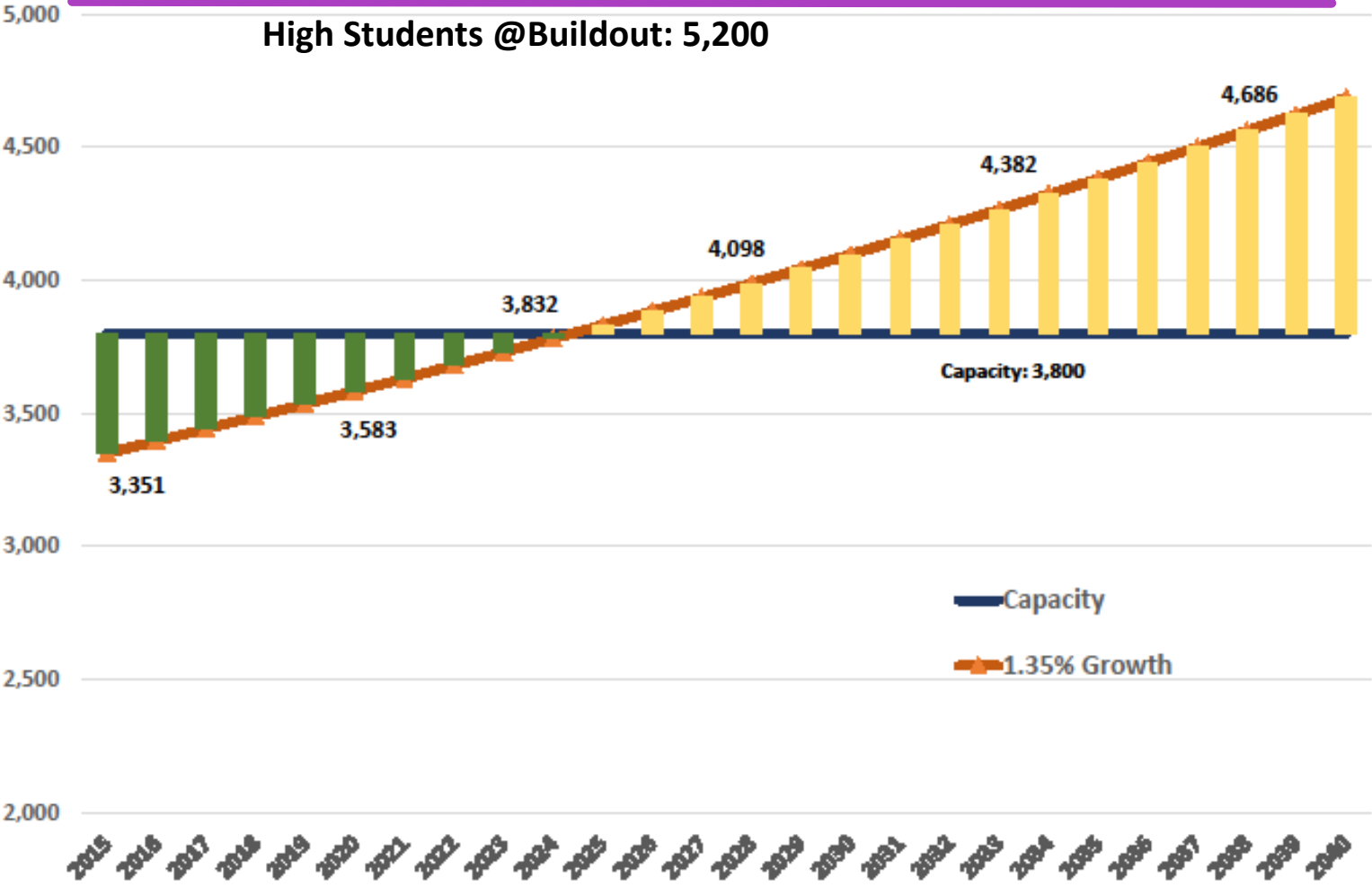




HIGH	CAPACITY	ENROLLMENT	% USE
Gulf Breeze	1,656	1,496	90%
Navarre	2,161	1,855	86%
ESA Total	3,817	3,351	88%

Santa Rosa County Schools  
South End High Enrollment Forecast

High Students @Buildout: 5,200



CAPACITY	4,800
2015	500
2020	300
2025	0
2030	-300
2035	-600
2040	-900