



# SANTA ROSA SCHOOLS

LINKING RESIDENTIAL DEVELOPMENT AND SCHOOL CAPACITY

# Our Challenge

HOW DO WE  
BUILD THE  
COMMUNITY WE  
CAN LIVE IN ?

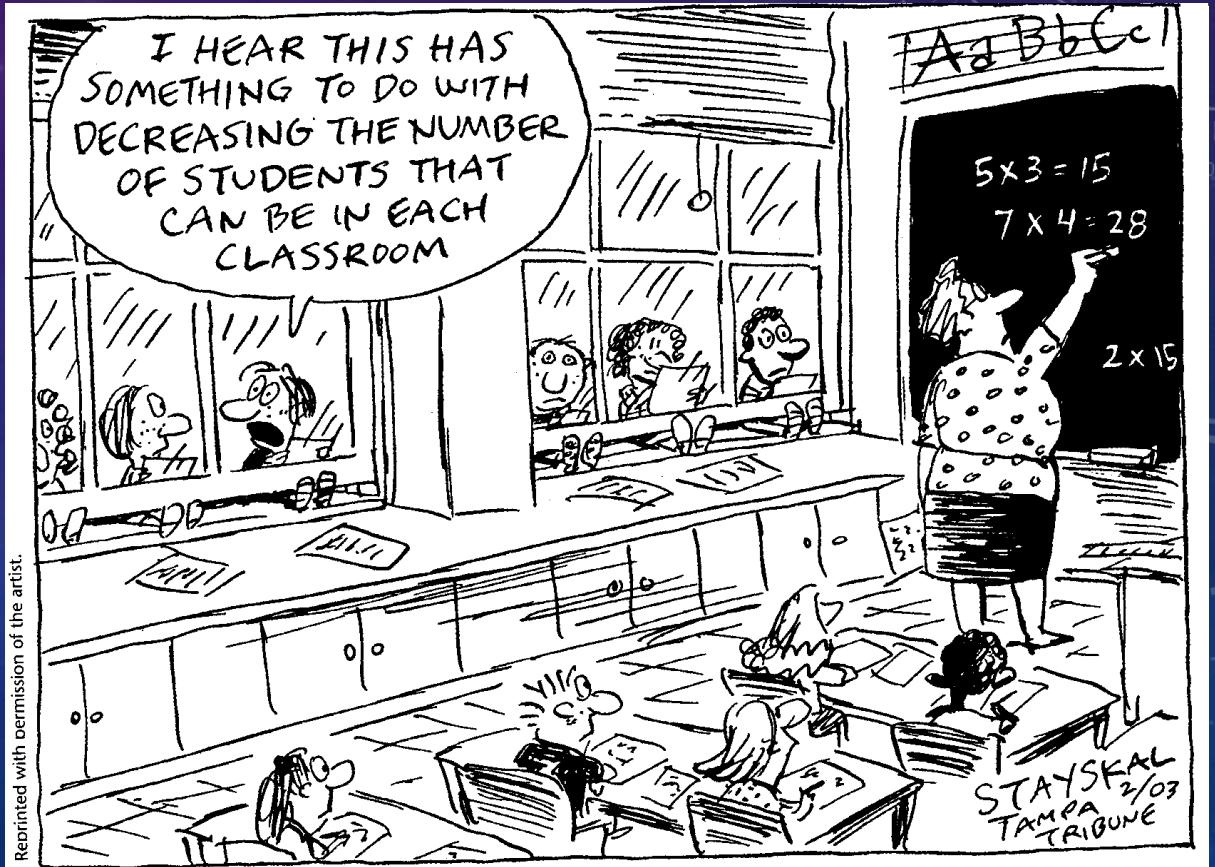
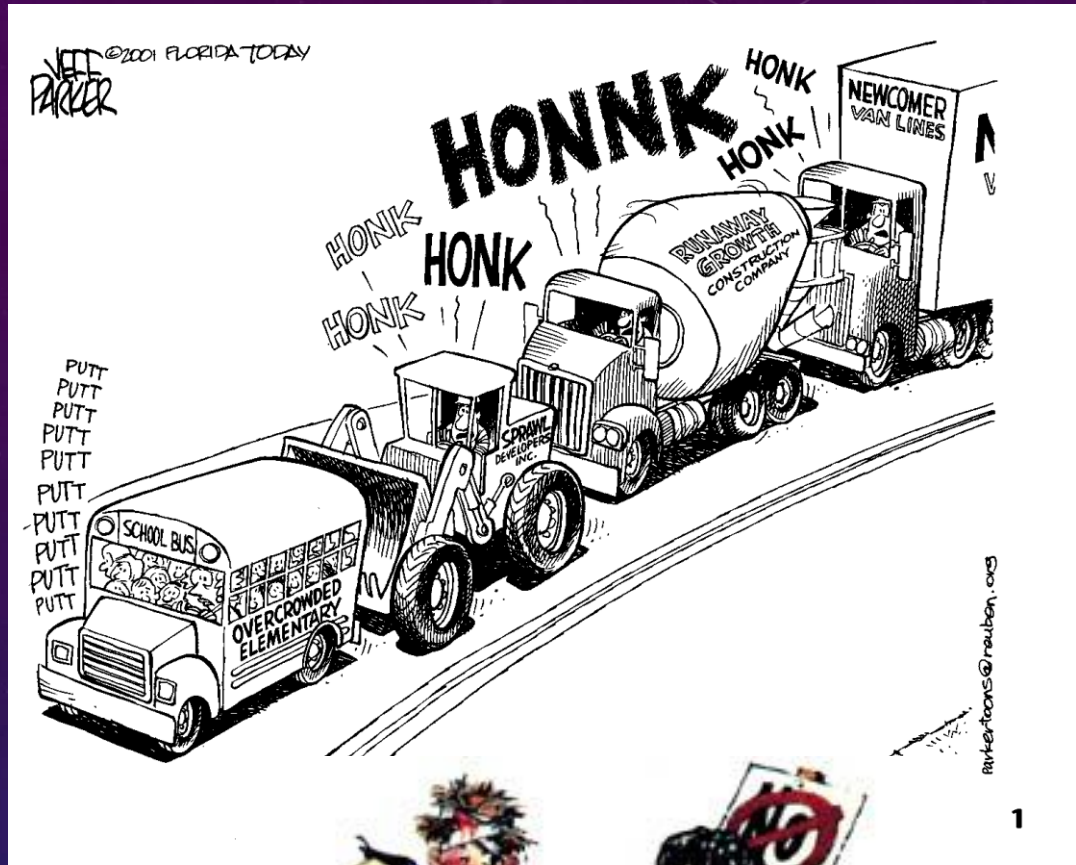


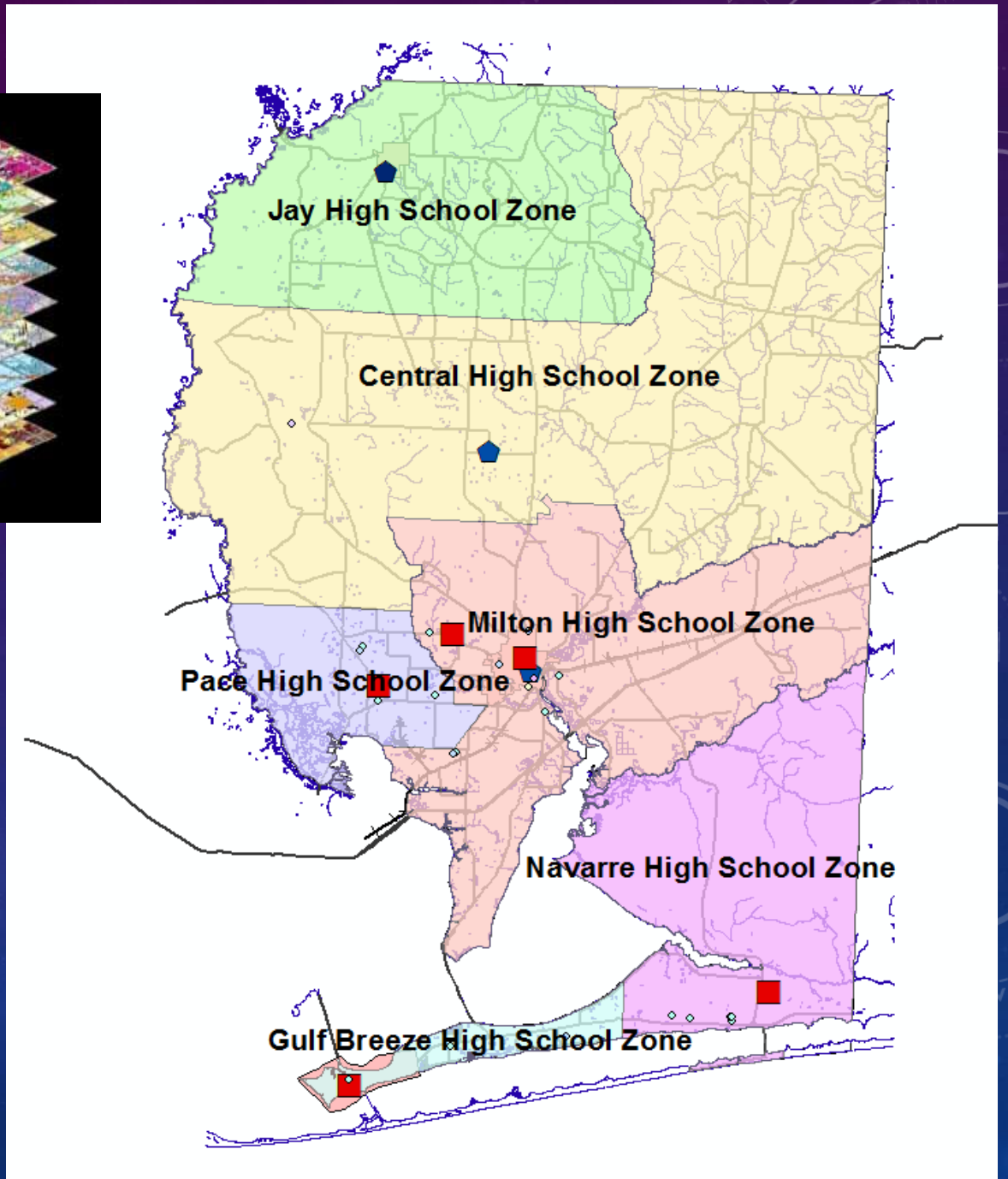
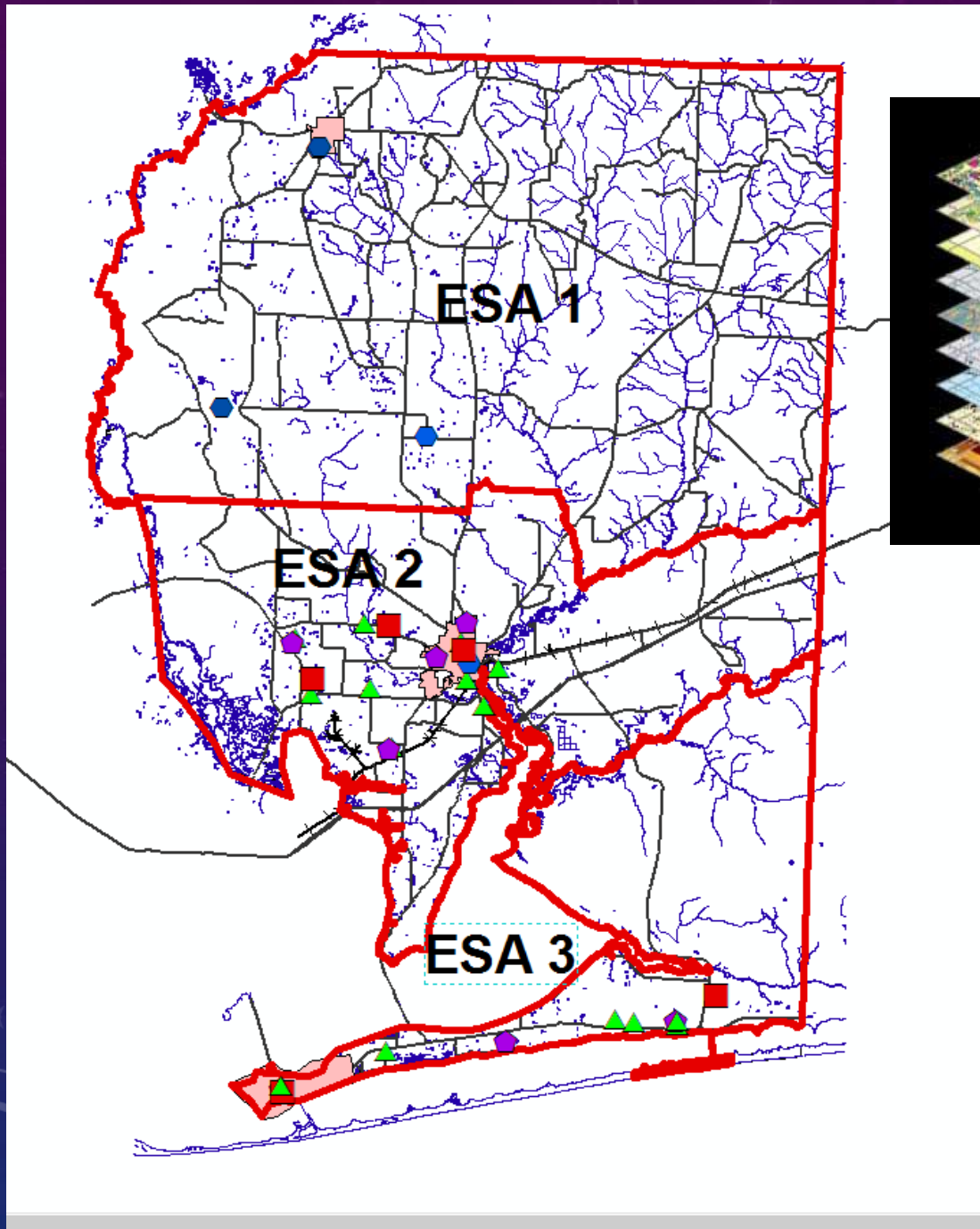
# Our Challenge



LIVE  
WORK PLAY  
LEARN

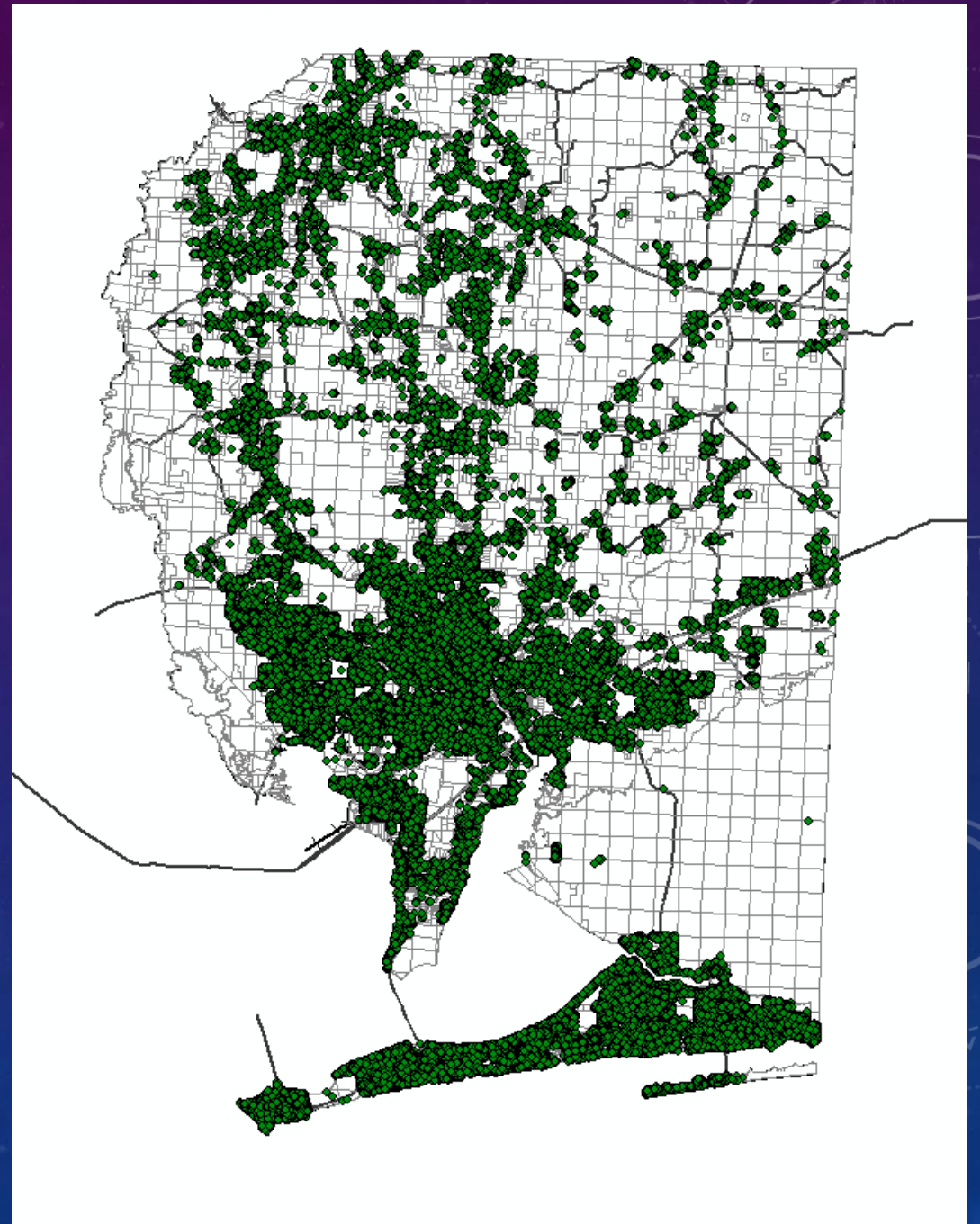






95,268 Parcels

113,084 Address Points



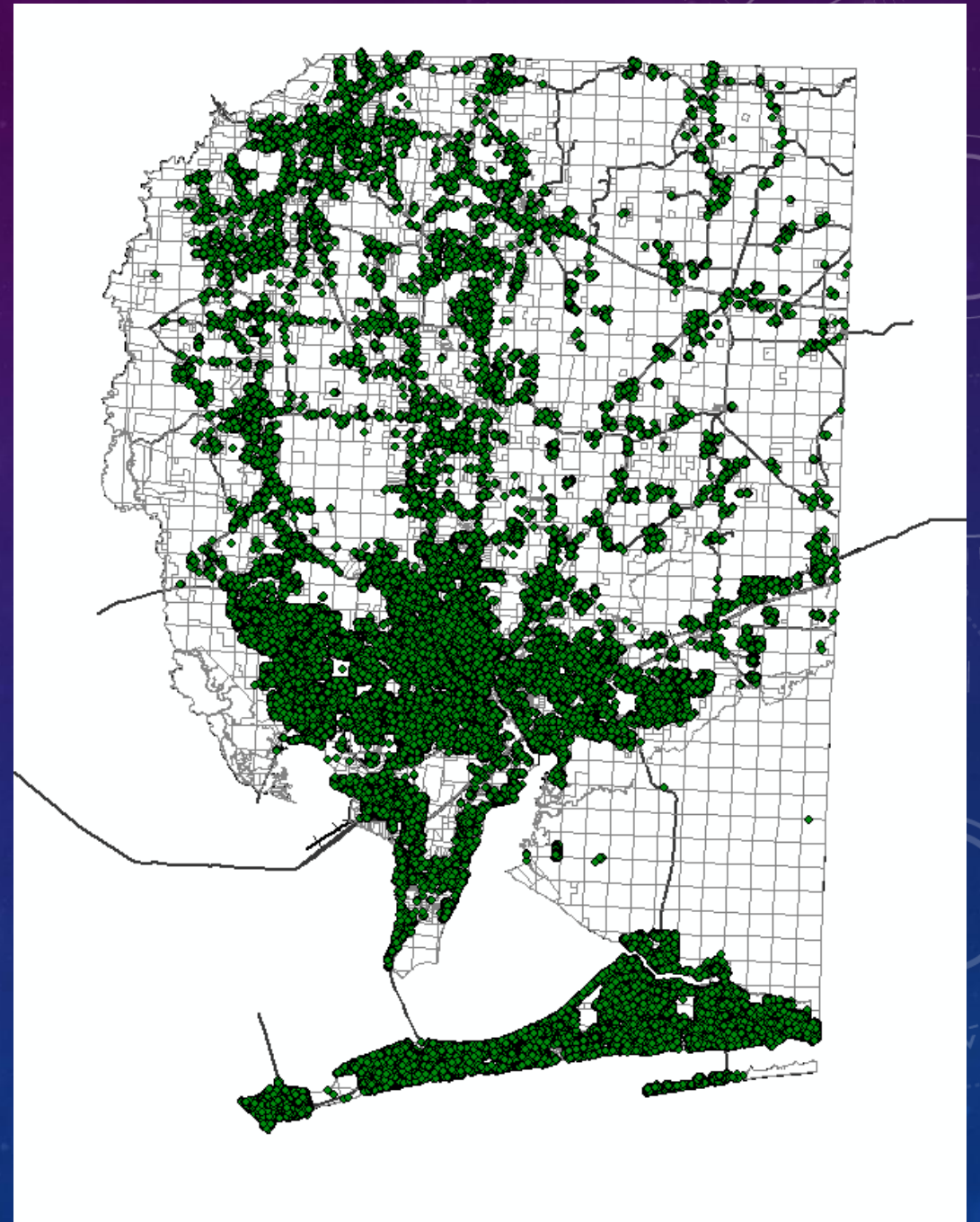
69,316 Dwelling Units

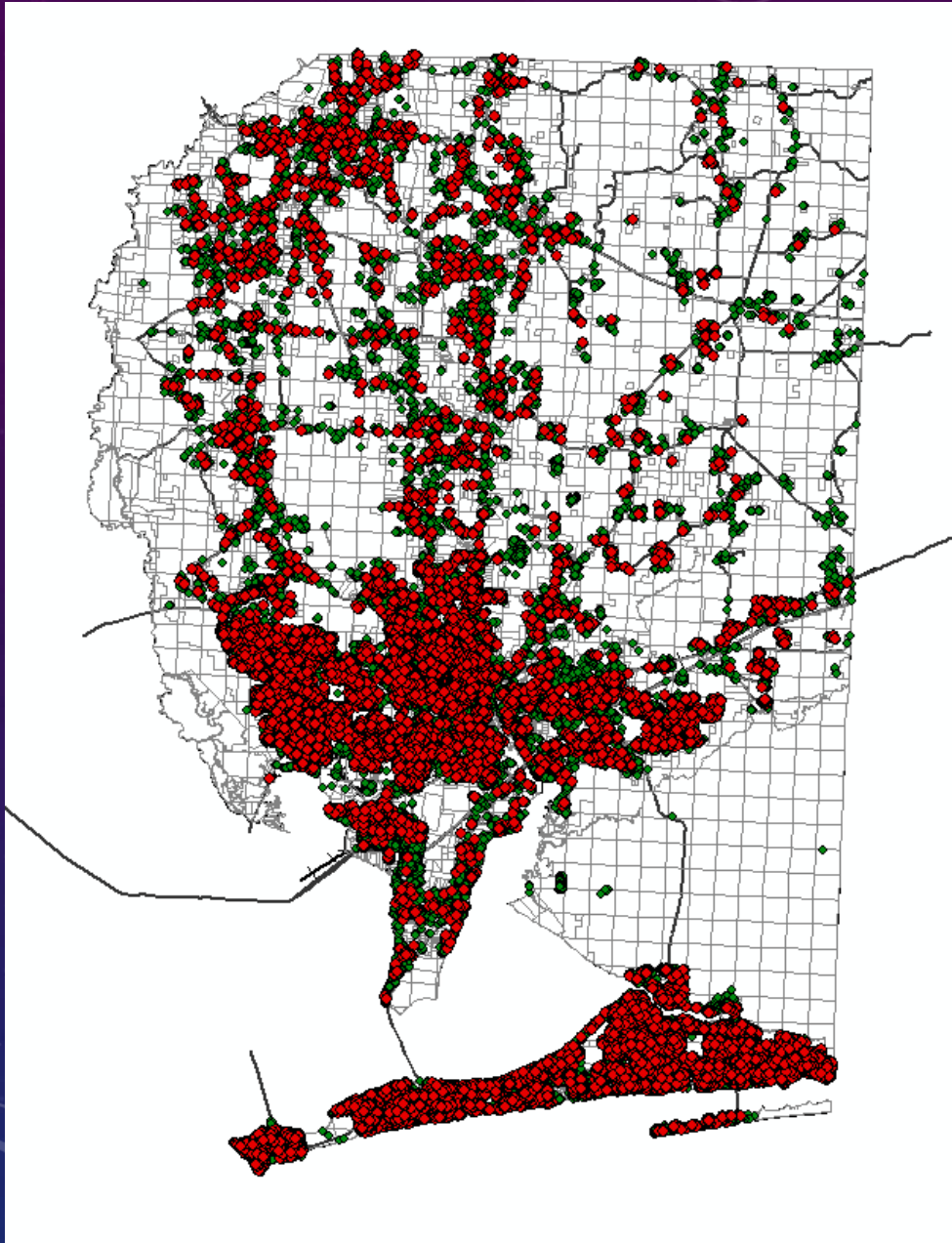
53,605 Single Family

9,066 Mobile Homes

2,303 Condominium

4,342 Multi Family



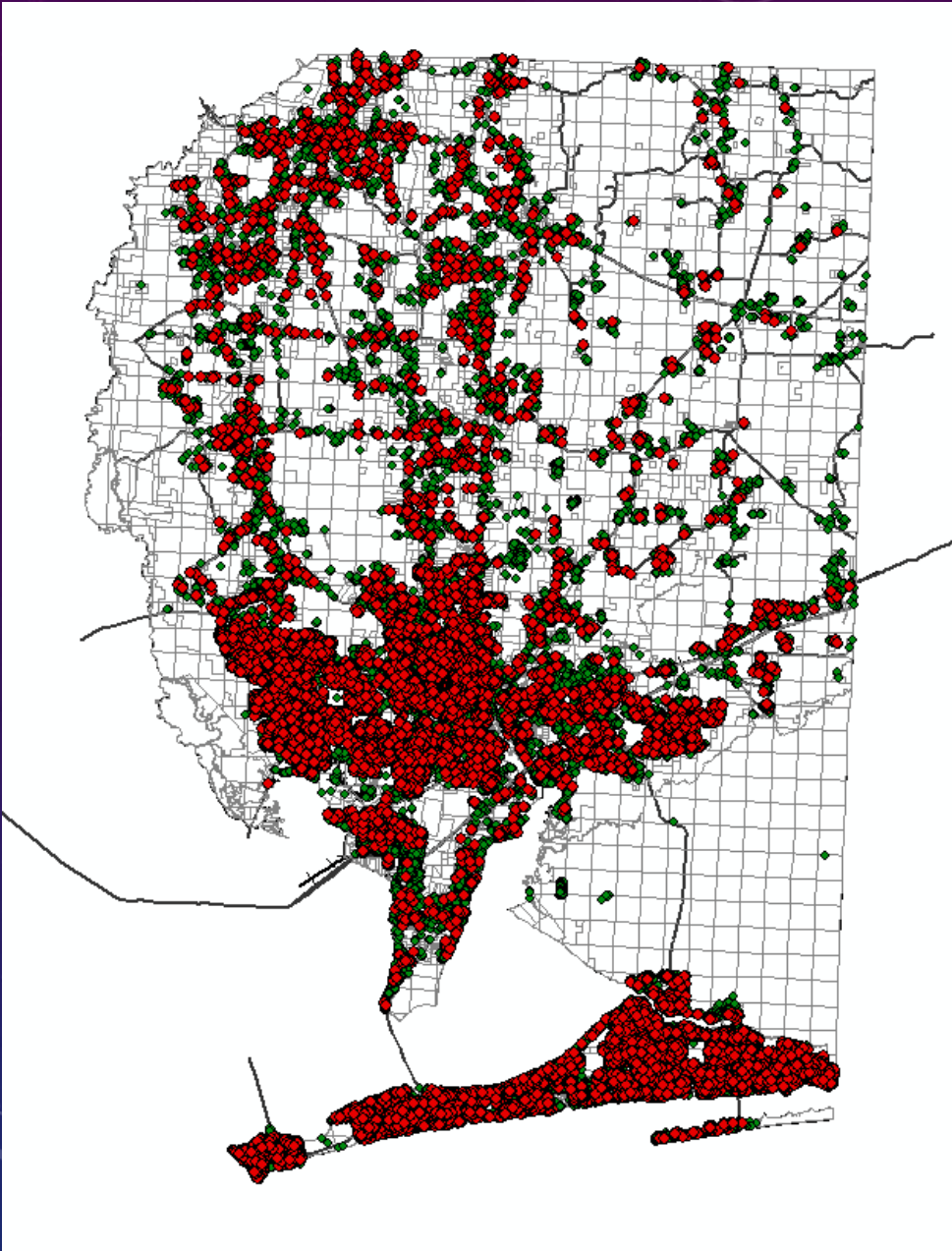


## Students

PK-5: 12,641

6-8: 6,400

9-12: 8,117



## Single Family

- Single Family Detached
- Mobile Homes

**100 SF = 41 Students**

## Multi – Family

- Multi Family
- Condos

**100 MF = 16 Students**

## North County

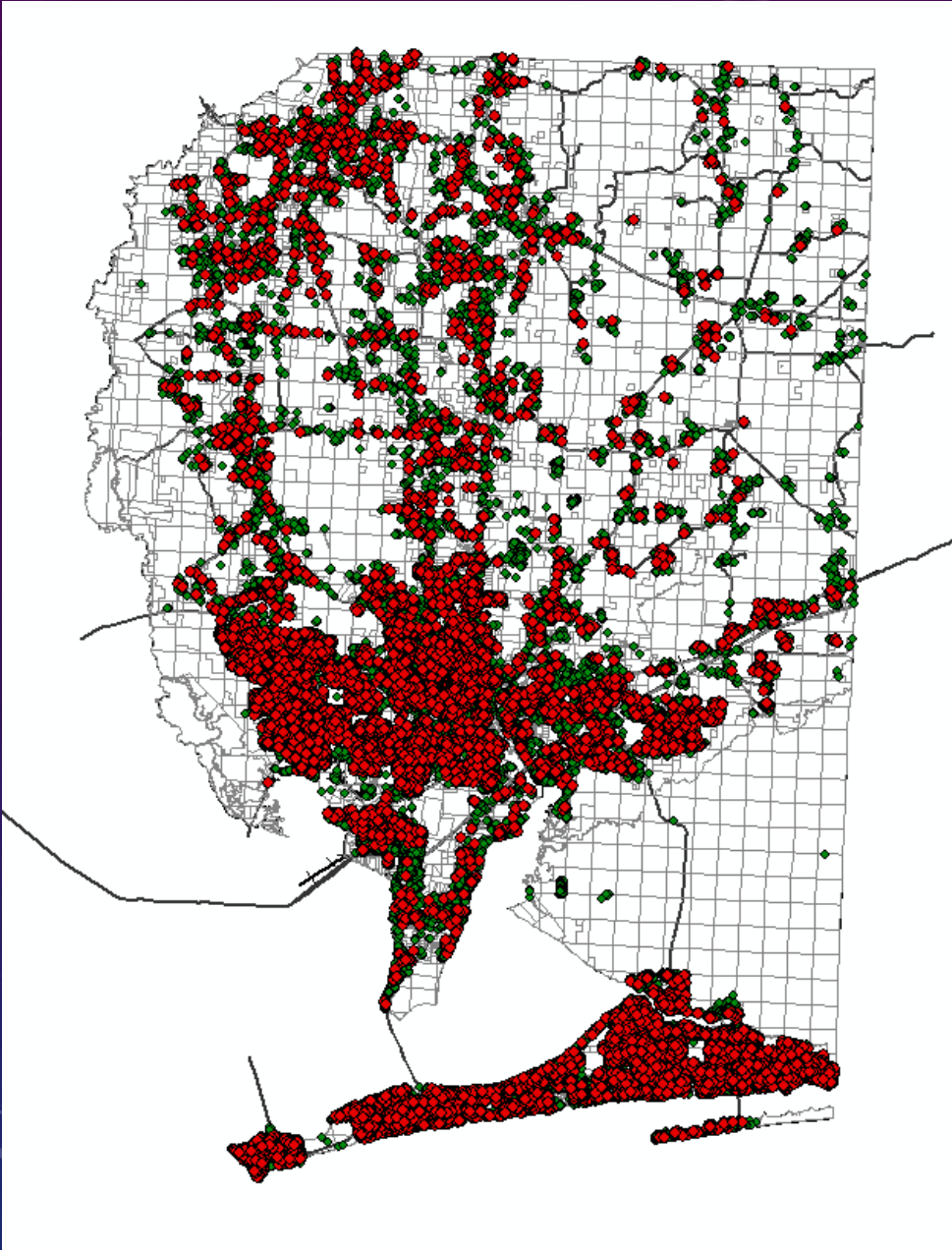
**100 SF = 41 Students**

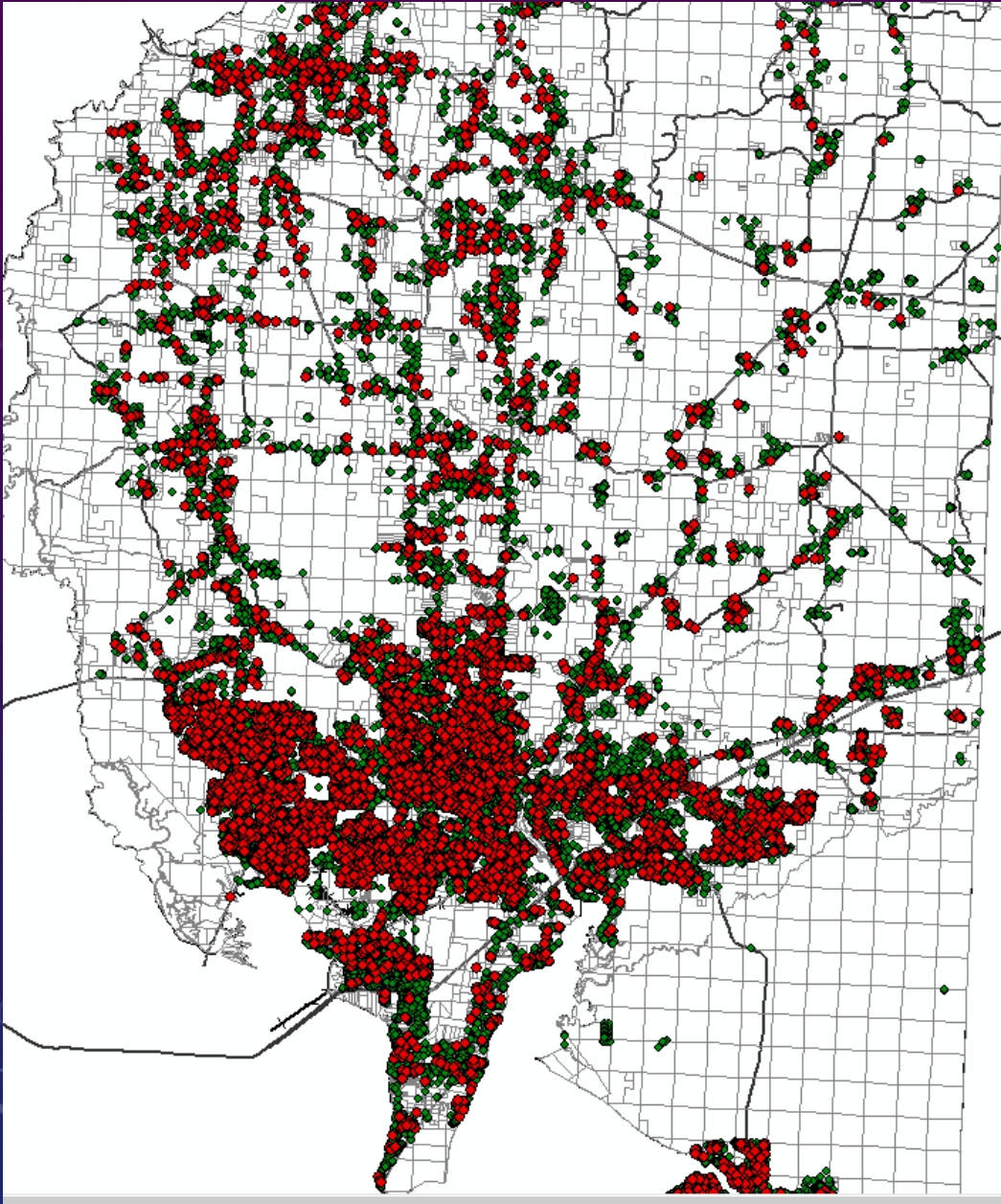
**100 MF = 18 Students**

## South County

**100 SF = 41 Students**

**100 MF = 15 Students**





## ESA North / ESA Central

100 Single Family

19 ELEM

10 MIDDLE

12 HIGH

100 Multi Family

10 ELEM

4 MIDDLE

4 HIGH



# ESA South

100 Single Family

100 Multi Family

19 ELEM

10 MIDDLE

12 HIGH

7 ELEM

4 MIDDLE

4 HIGH

# SANTA ROSA COUNTY SCHOOL DISTRICT TOTAL SCHOOL ENROLLMENT PROJECTIONS

- 2007 COFTE
- 2010 COFTE
- 2011 COFTE
- 2012 COFTE
- 2013 COFTE
- 2014 COFTE
- 2015 COFTE
- Actual Enroll
- CAPACITY

Total Capacity: 30,000

2005-2006 2006-2007 2007-2008 2008-2009 2009-2010 2010-2011 2011-2012 2012-2013 2013-2014 2014-2015 2015-2016 2016-2017 2017-2018 2018-2019 2019-2020 2020-2021 2021-2022 2022-2023 2023-2024 2024-2025

25,939

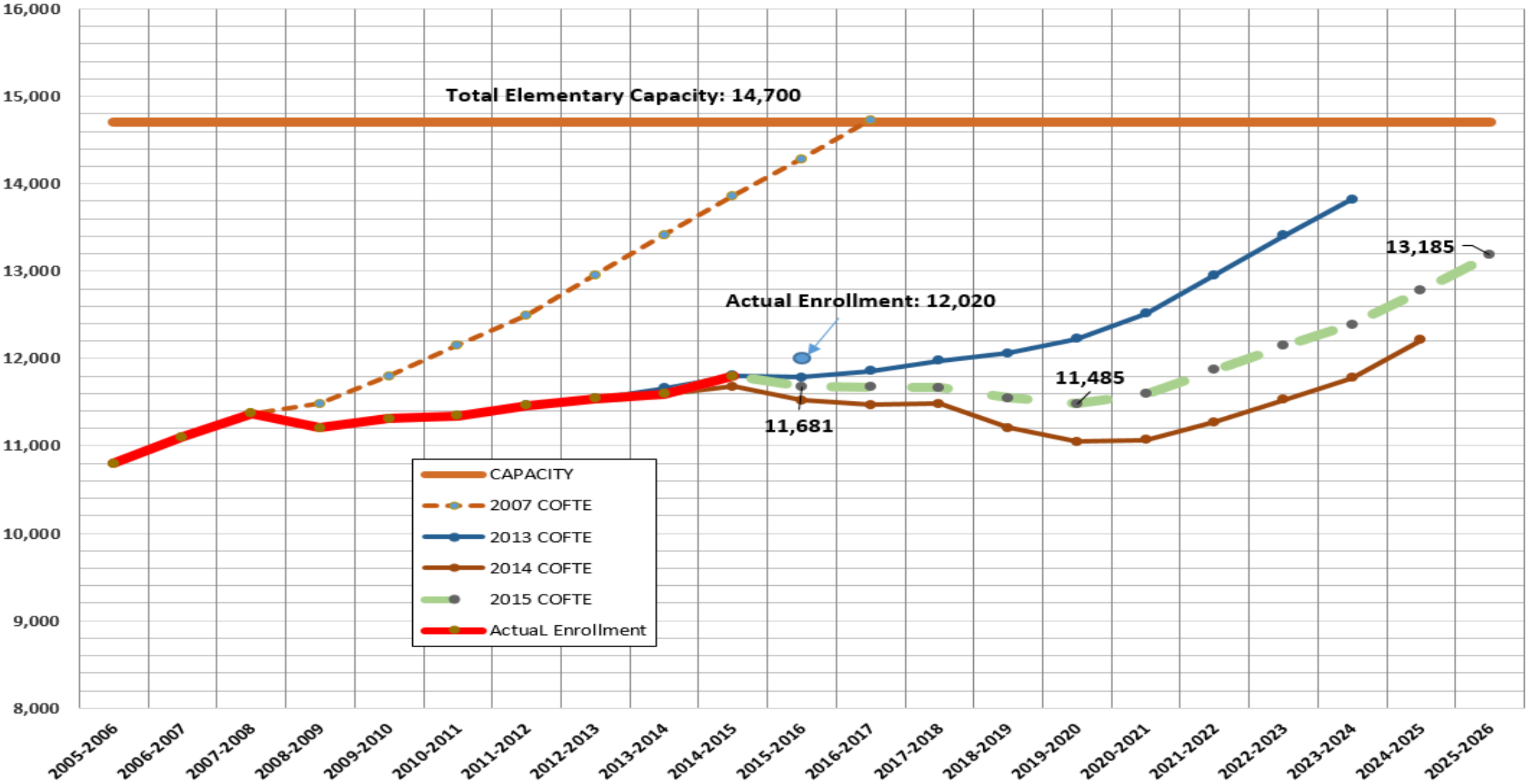
26,016

27,887



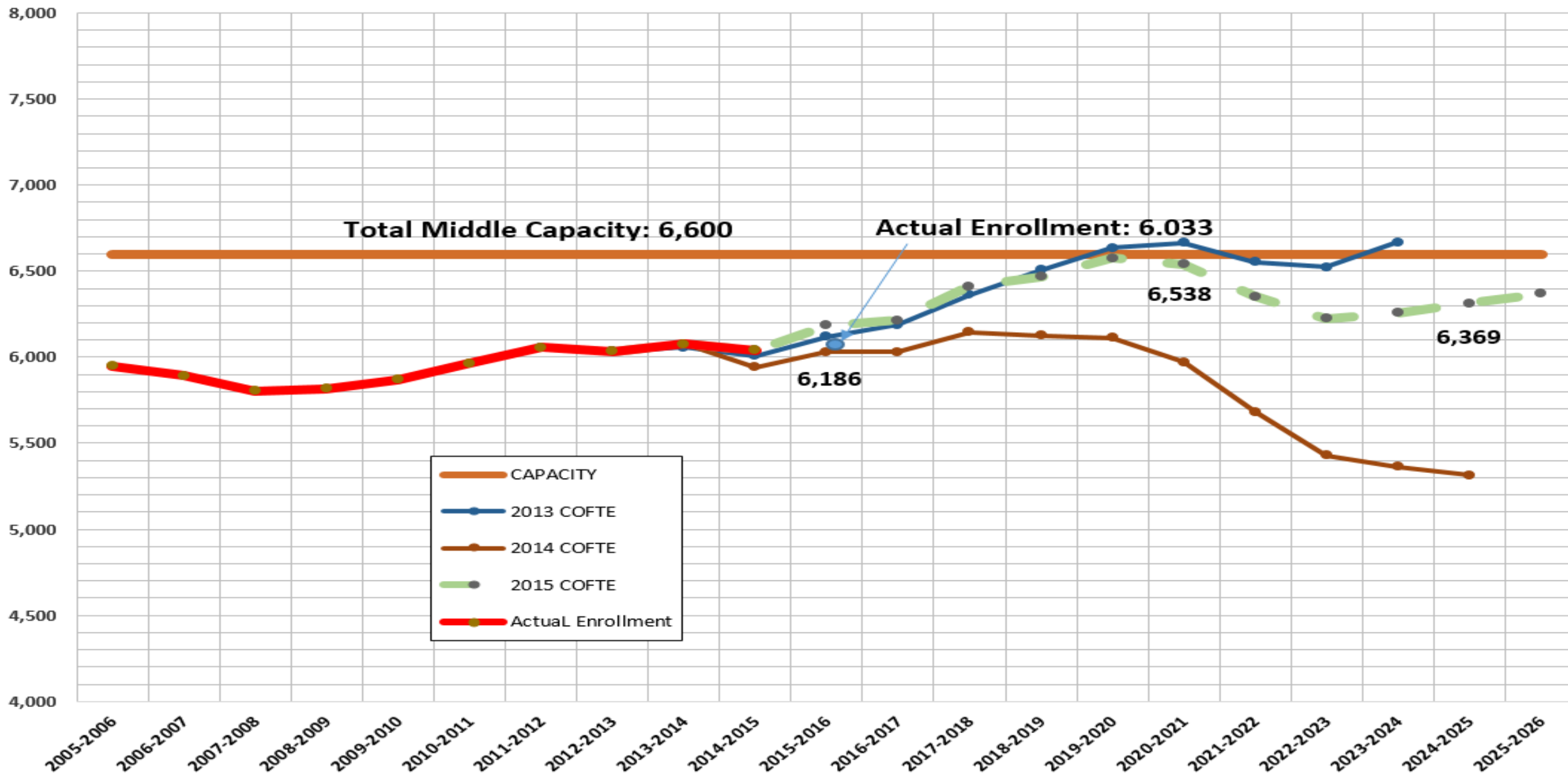
# Santa Rosa Elementary School

## Comparison of COFTE Enrollment Projections



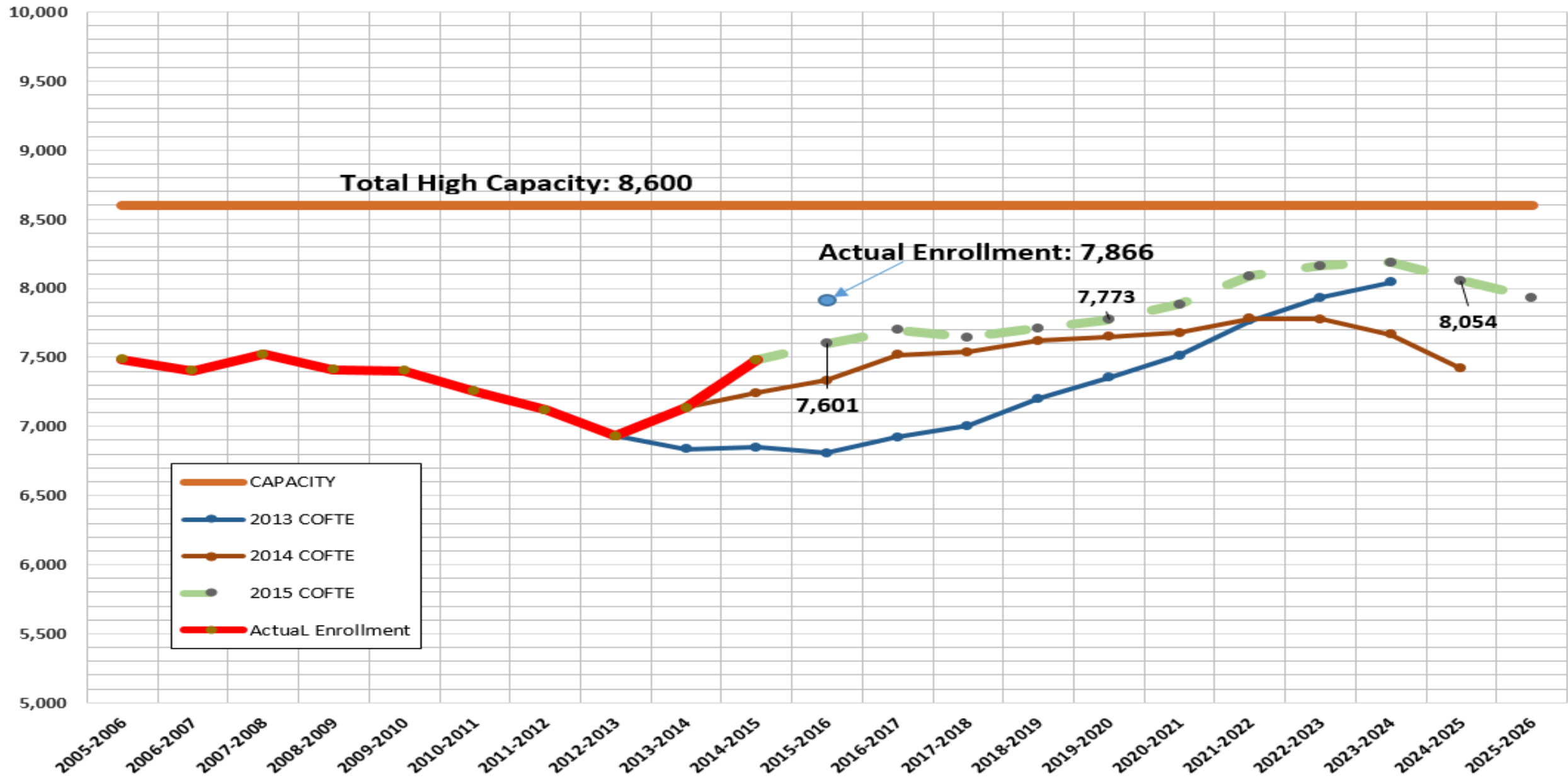
# Santa Rosa Middle School

## Comparison of COFTE Enrollment Projections

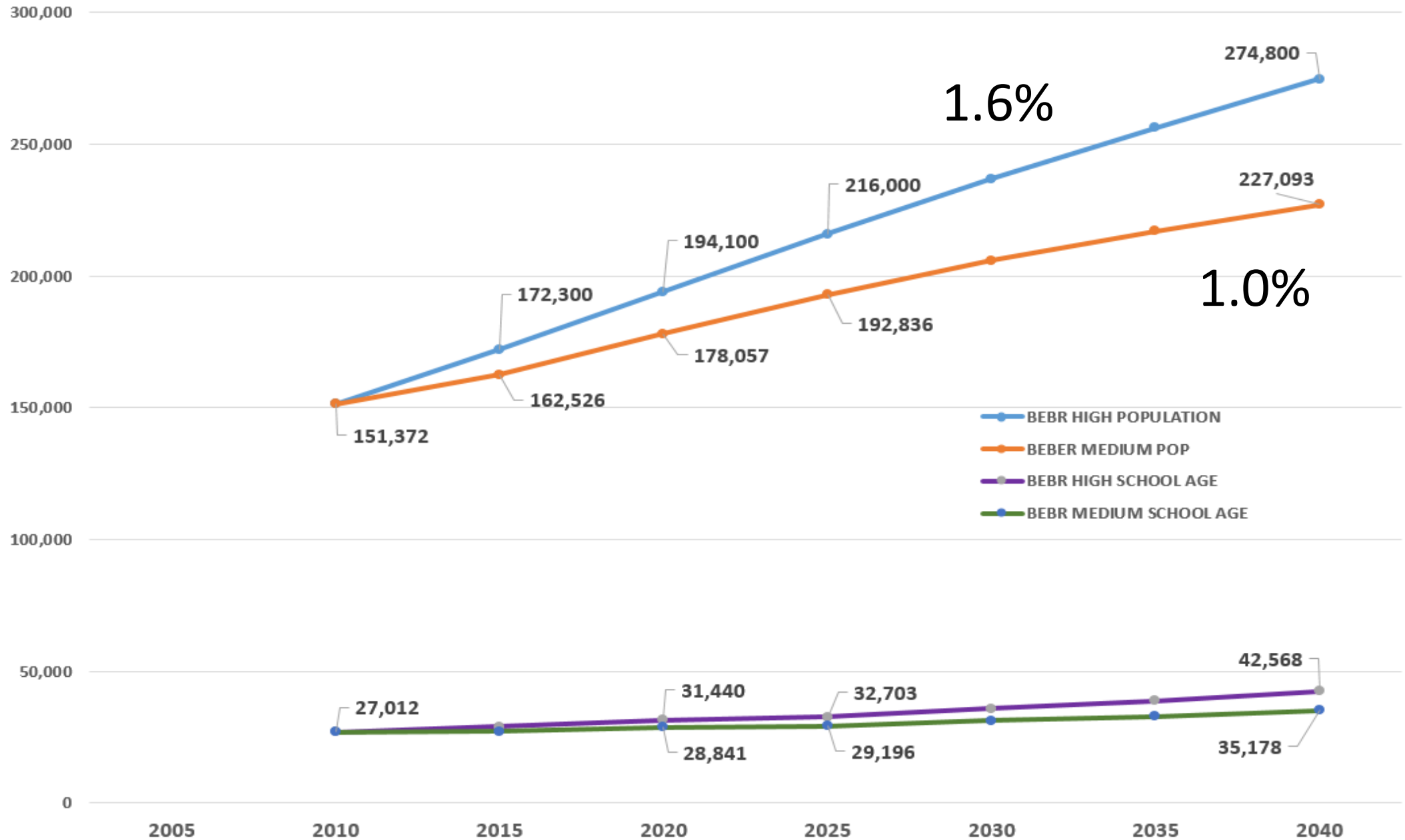


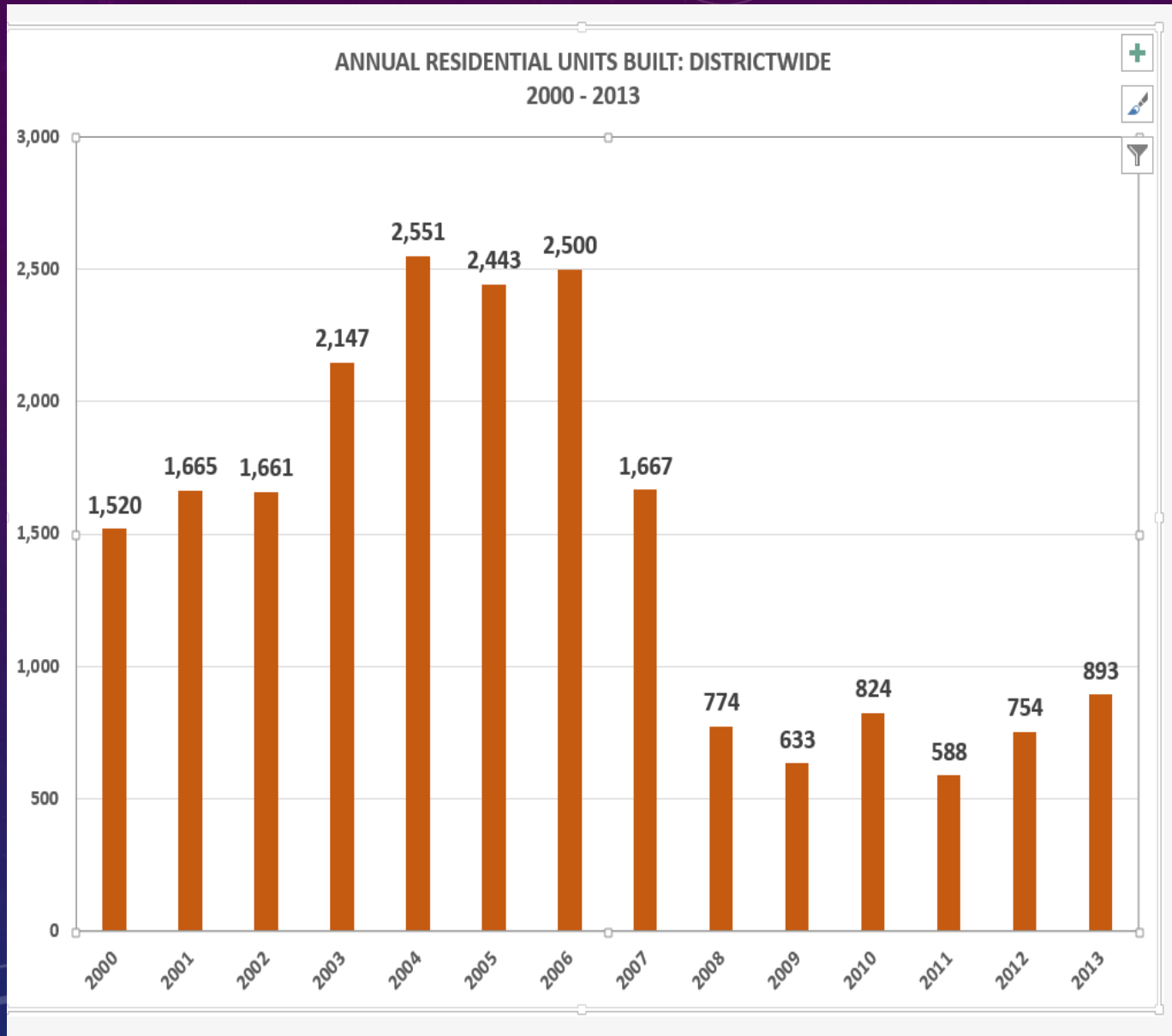
# Santa Rosa High School

## Comparison of COFTE Enrollment Projections



# Santa Rosa County BEBR Population / School Age Projections





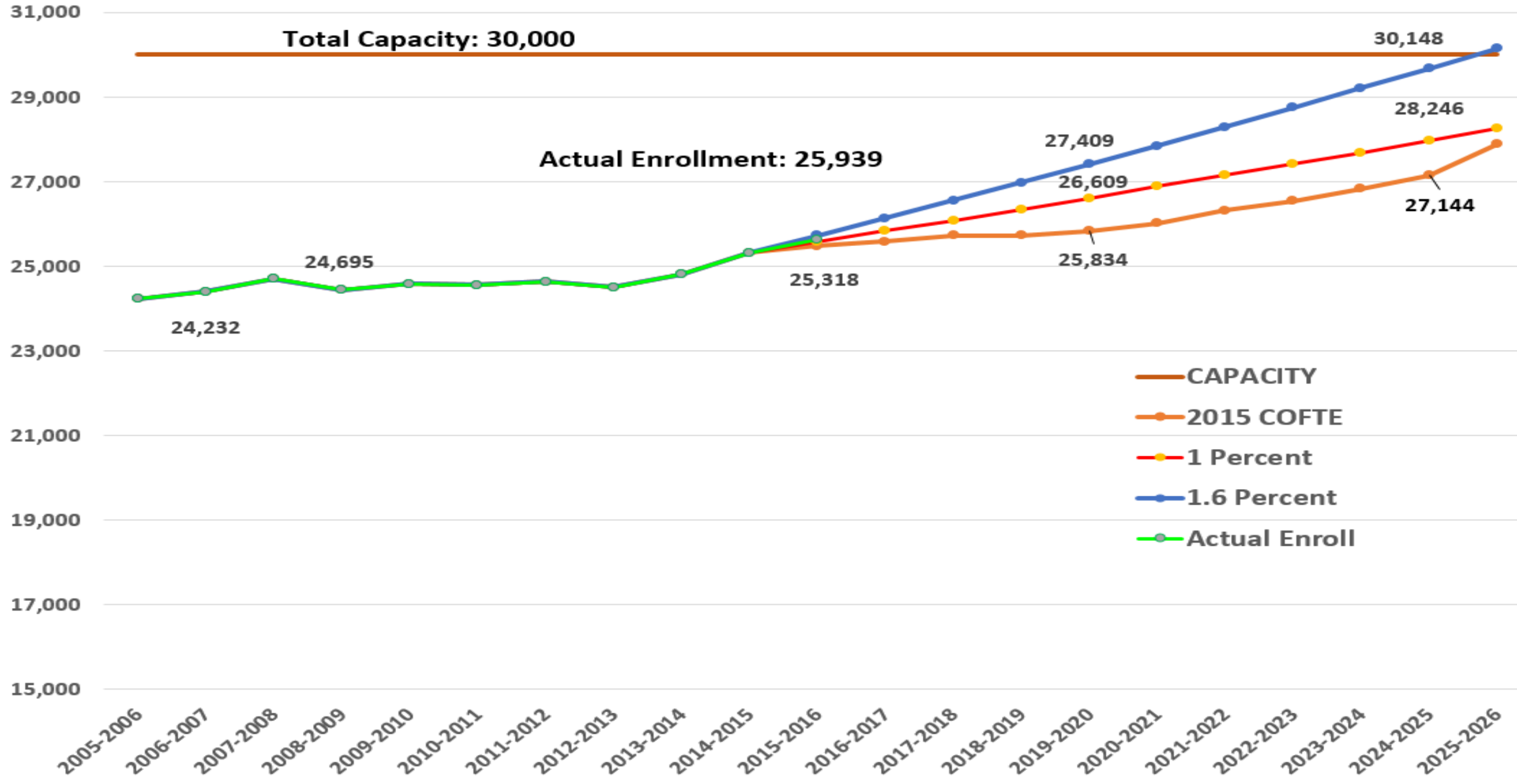
Annualized Growth Rate 2000 - 2007

4.8%

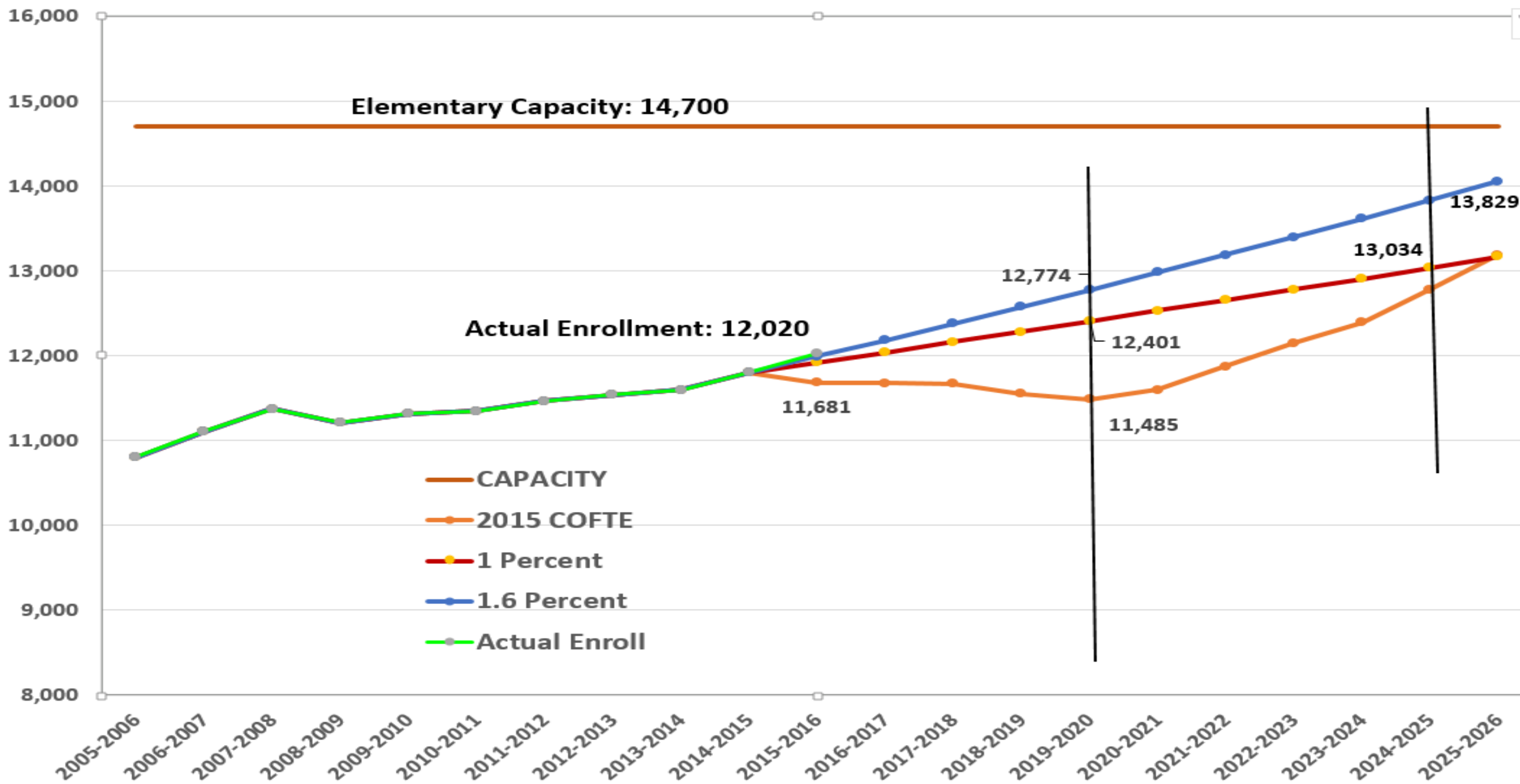
Annualized Growth Rate 2008 - 2013

1.1%

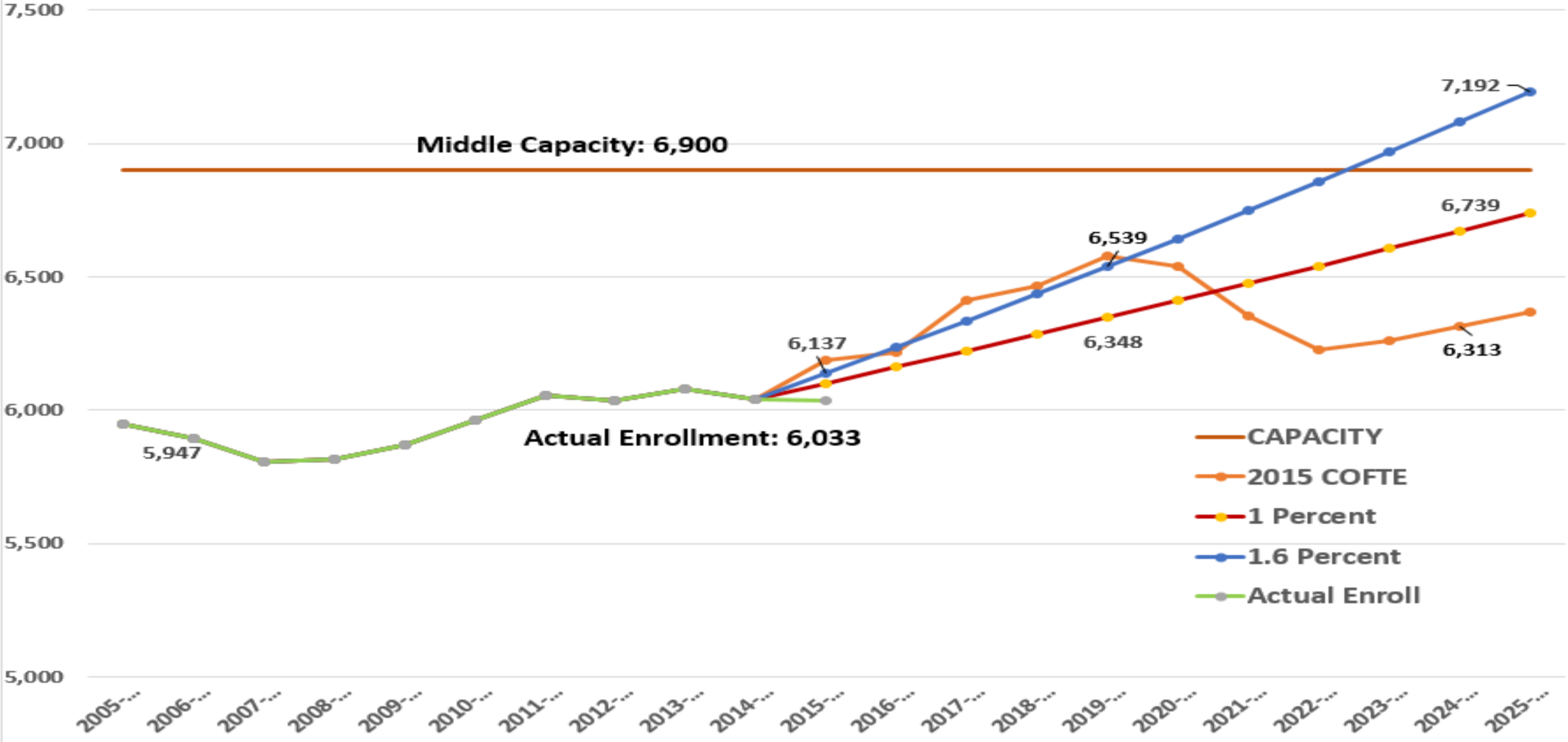
# SANTA ROSA COUNTY SCHOOL DISTRICT TOTAL STUDENT ENROLLMENT PROJECTIONS



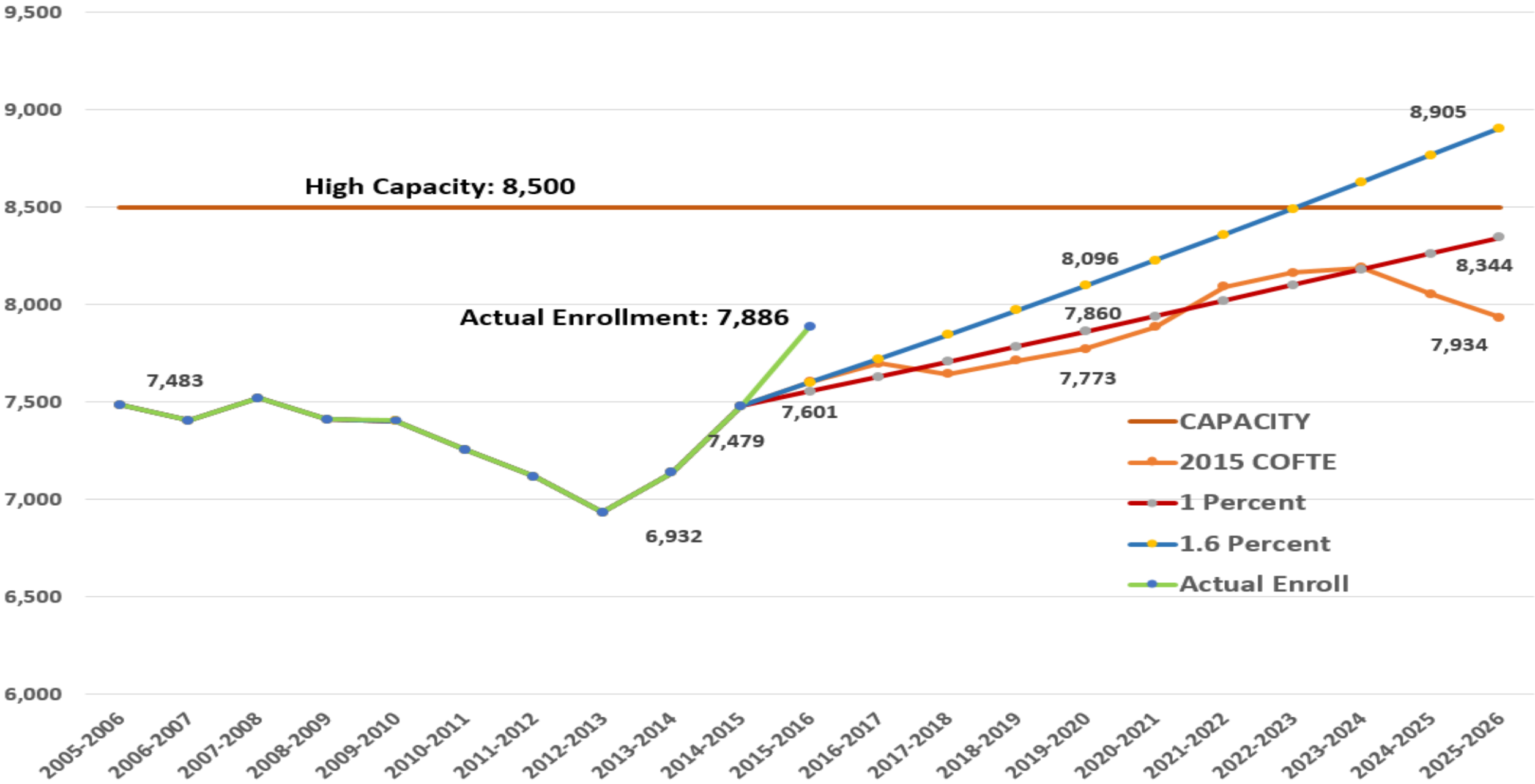
# SANTA ROSA COUNTY SCHOOL DISTRICT ELEMENTARY STUDENT ENROLLMENT PROJECTIONS

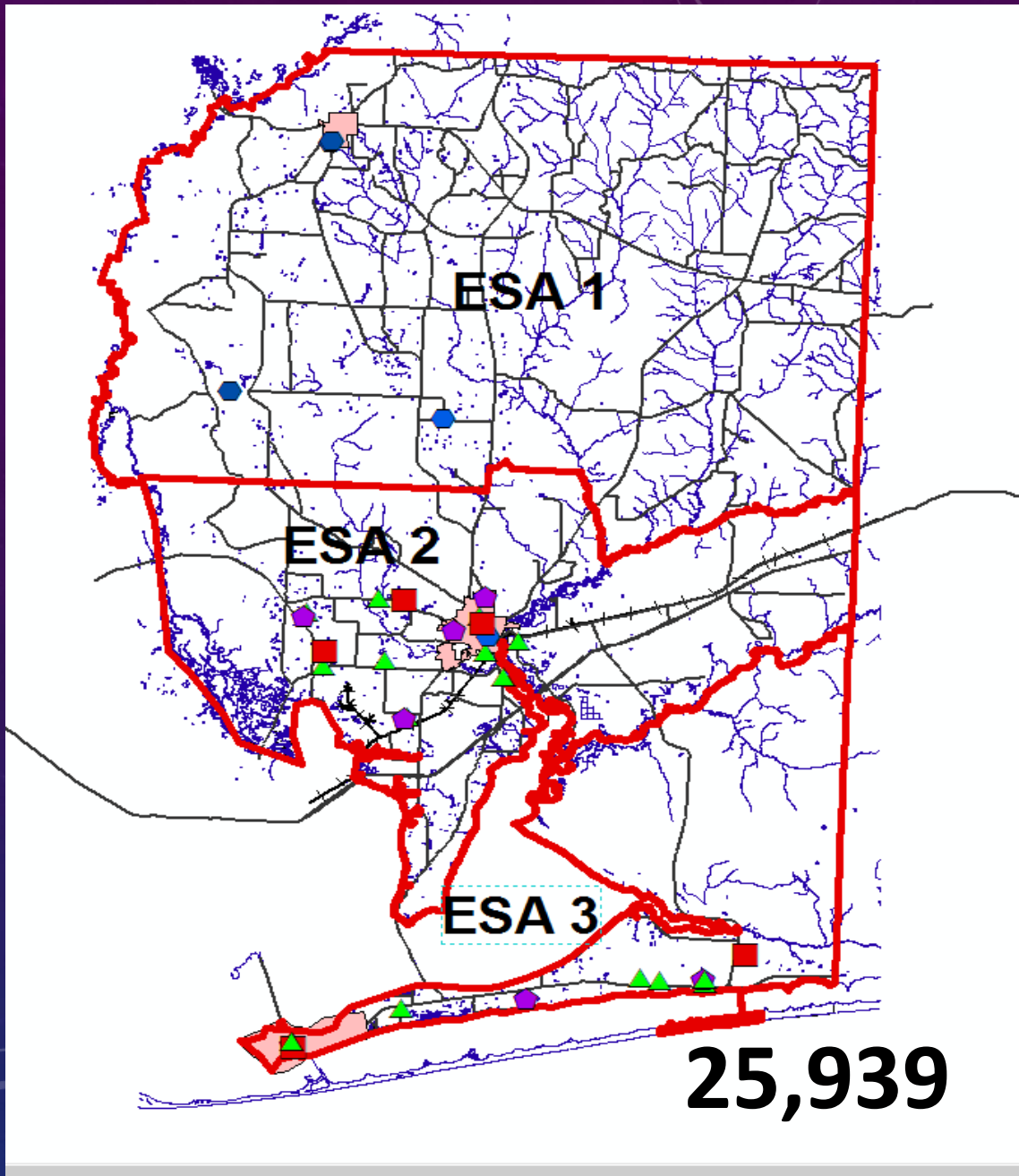


SANTA ROSA COUNTY SCHOOL DISTRICT  
MIDDLE STUDENT ENROLLMENT PROJECTIONS



SANTA ROSA COUNTY SCHOOL DISTRICT  
HIGH STUDENT ENROLLMENT PROJECTIONS

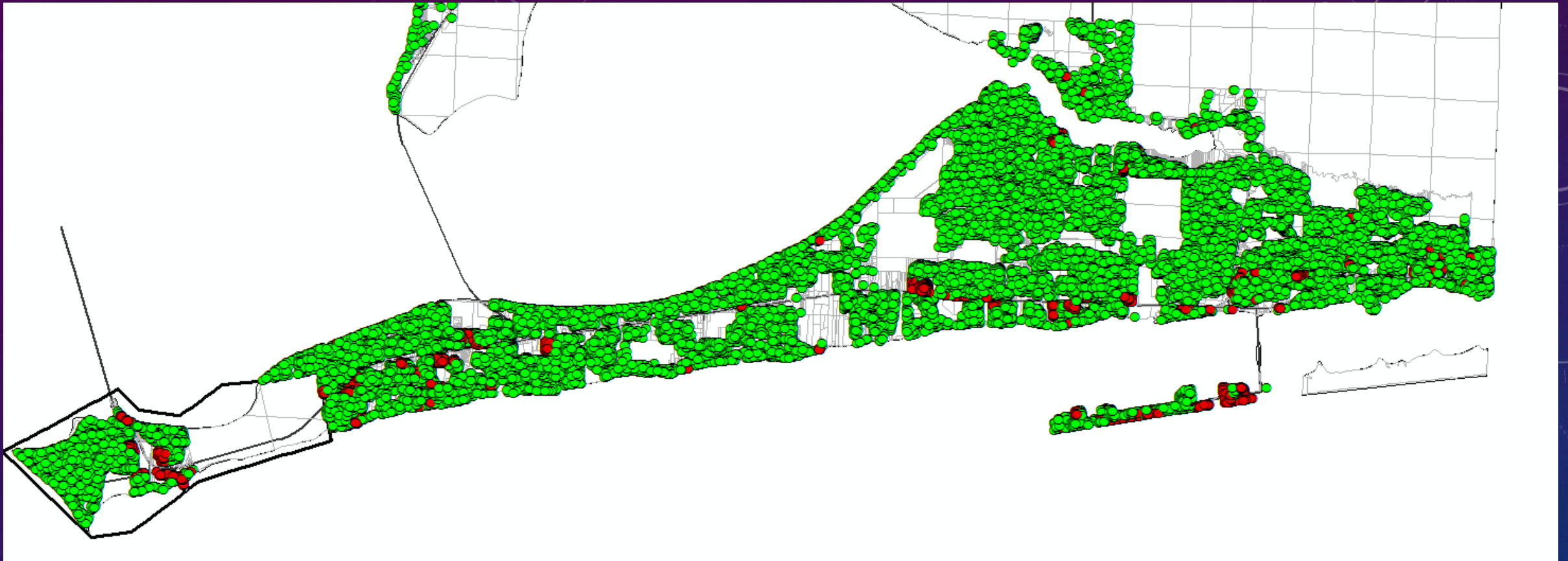




ESA 1	CAPACITY	ENROLLMENT	% USE
ELEMENTARY	1,460	996	68%
MIDDLE	415	301	72%
HIGH	708	504	71%
TOTAL	2,583	1,802	70%

ESA 2	CAPACITY	ENROLLMENT	% USE
ELEMENTARY	7,569	6,025	80%
MIDDLE	3,289	2,914	89%
HIGH	4,073	3,676	90%
TOTAL	14,930	12,625	84%

ESA 3	CAPACITY	ENROLLMENT	% USE
ELEMENTARY	5,652	4,999	88%
MIDDLE	2,881	2,818	98%
HIGH	3,818	3,706	97%
TOTAL	12,351	11,523	93%



## ESA SOUTH

Existing Dwelling Units: 29,926

Single Family: 25,526

Multi Family: 4,400

## STUDENTS RESIDING

Elementary: 5,049

Middle: 2,737

High: 3,351

Total: 11,137

## DEVELOPMENT POTENTIAL

Infill: 6,824 SF

Developable SF: 14,824

Developable MF: 14,022



## STUDENTS @ MAX BUILDOUT

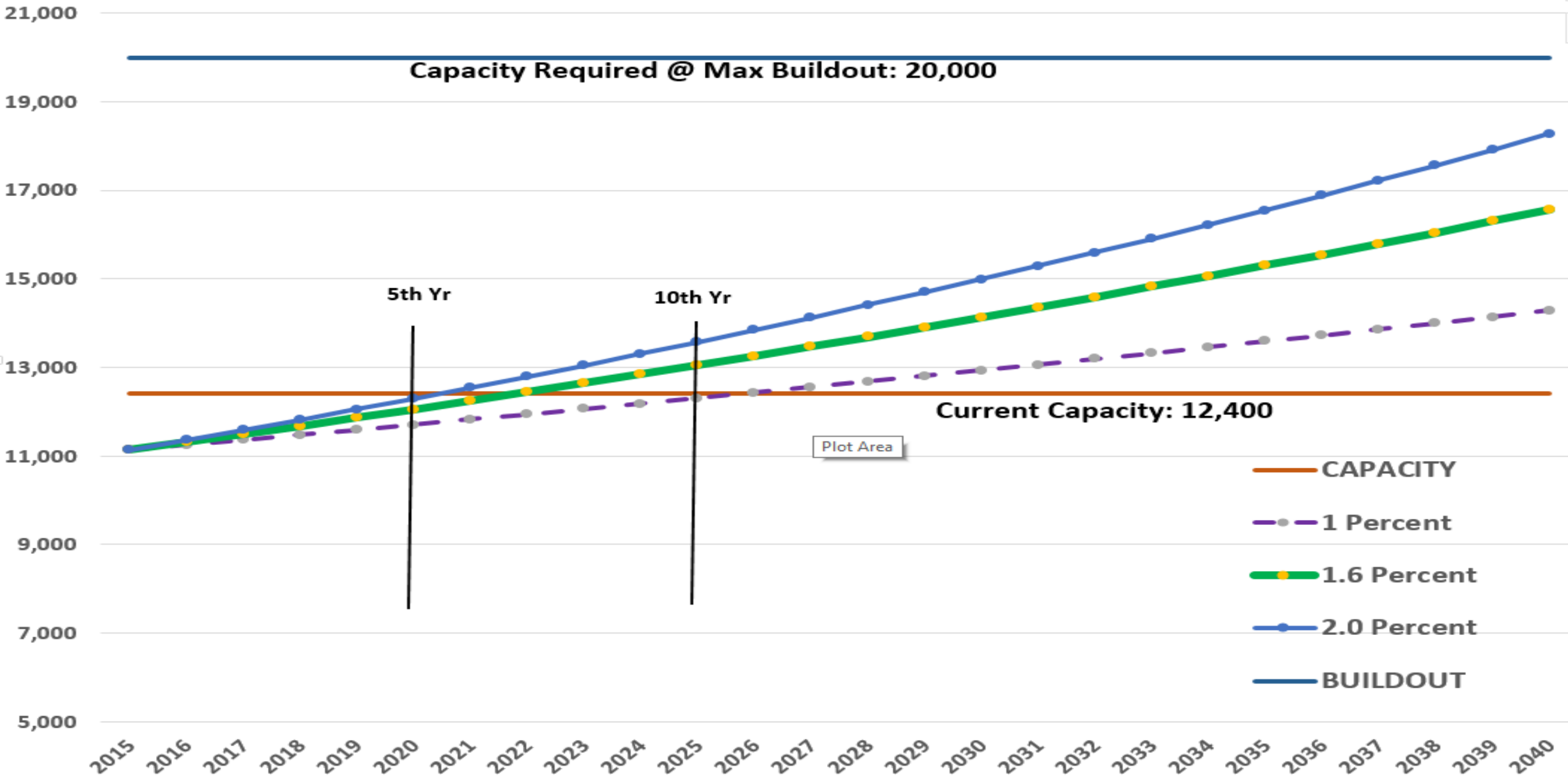
Elementary: 9,200

Middle: 4,900

High: 5,900

Total: 20,000

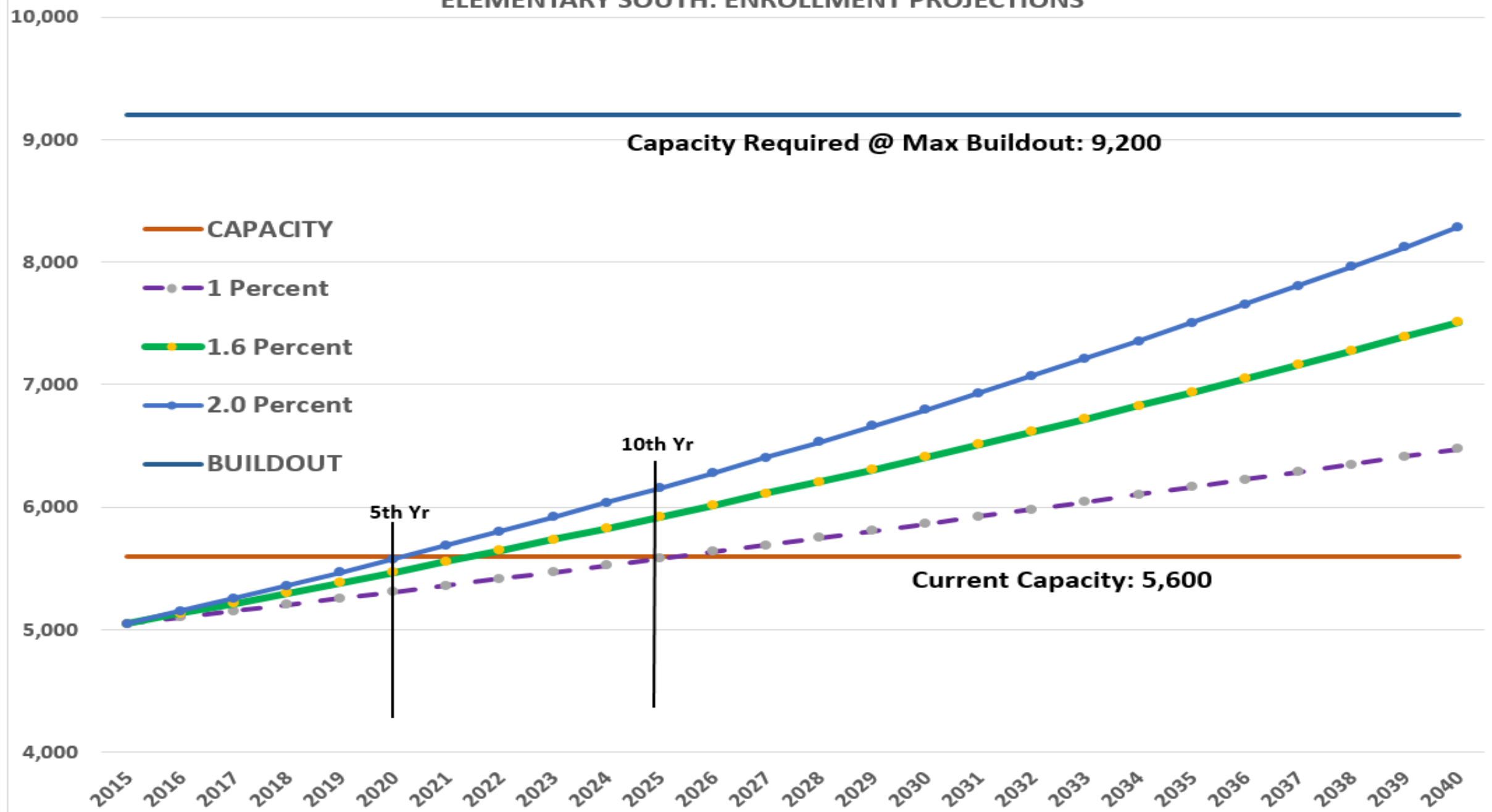
# SANTA ROSA COUNTY SCHOOL DISTRICT TOTAL ESA SOUTH ENROLLMENT PROJECTIONS





ELEM	CAPACITY	ENROLLMENT	% USE
Gulf Breeze	913	706	77%
Oriole Beach	846	817	97%
Holley Navarre	1,859	1,719	92%
West Navarre	2,034	1,757	86%
ESA Total	5,652	4,999	88%

# SANTA ROSA COUNTY SCHOOL DISTRICT ELEMENTARY SOUTH: ENROLLMENT PROJECTIONS





MIDDLE	CAPACITY	ENROLLMENT	% USE
Gulf Breeze	907	894	99%
Holley Navarre	915	868	95%
Woodlawn Beach	1,058	1,056	100%
ESA Total	2,881	2,818	98%

# SANTA ROSA COUNTY SCHOOL DISTRICT MIDDLE ESA SOUTH: ENROLLMENT PROJECTIONS

Chart Area

Capacity Required @ Max Buildout: 4,900

CAPACITY

1 Percent

1.6 Percent

2.0 Percent

BUILDOUT

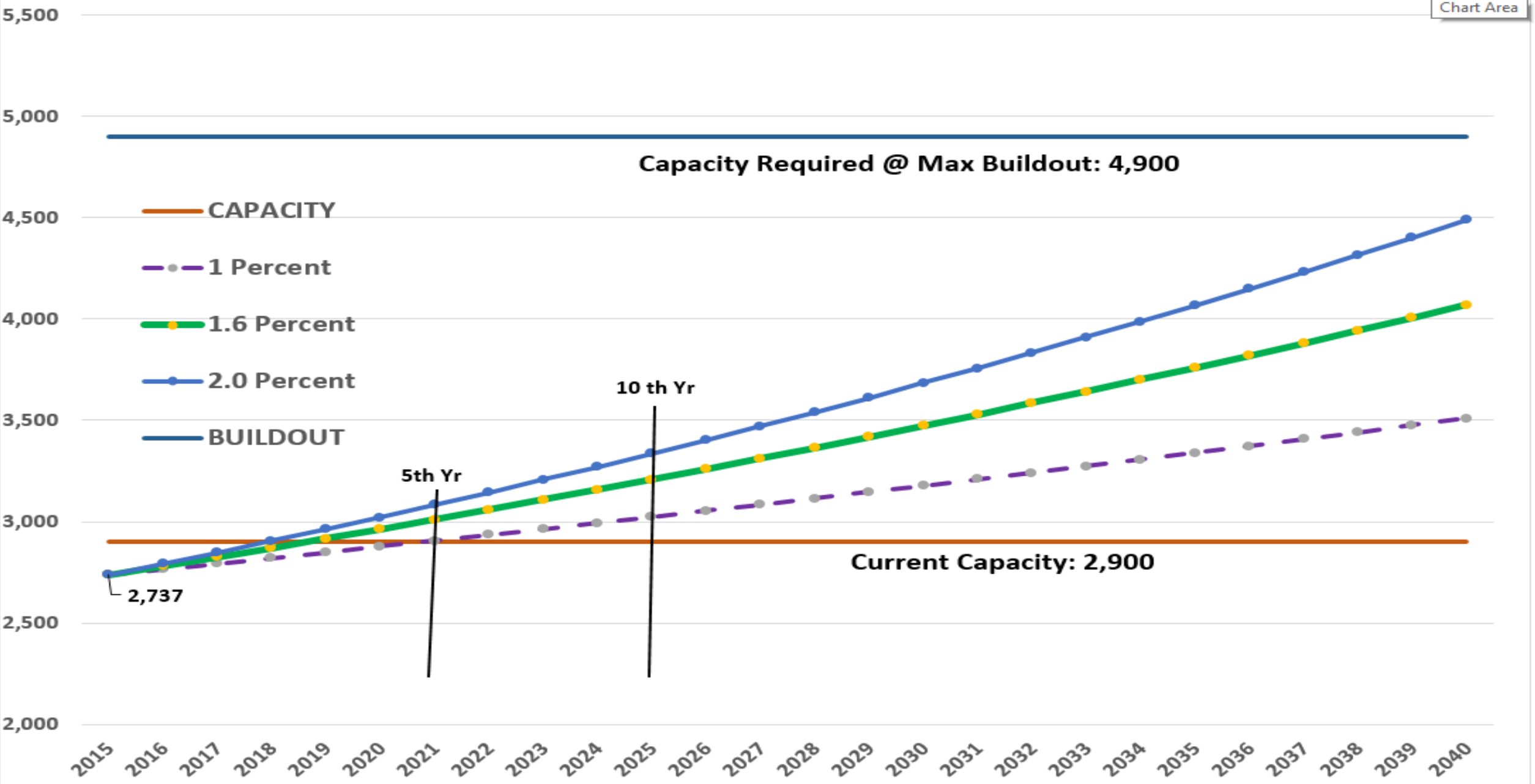
5th Yr

10 th Yr

Current Capacity: 2,900

2,737

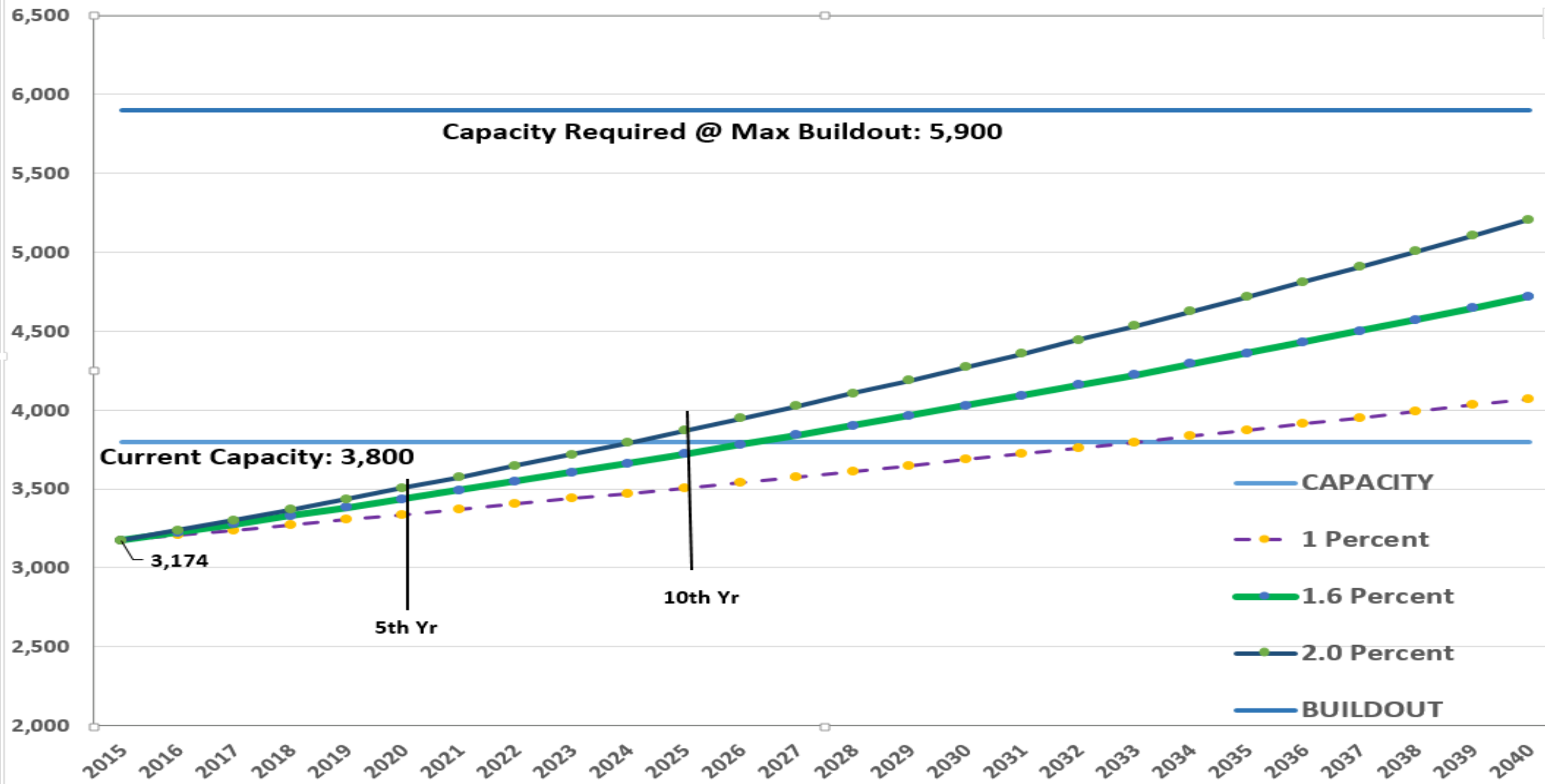
2015 2016 2017 2018 2019 2020 2021 2022 2023 2024 2025 2026 2027 2028 2029 2030 2031 2032 2033 2034 2035 2036 2037 2038 2039 2040

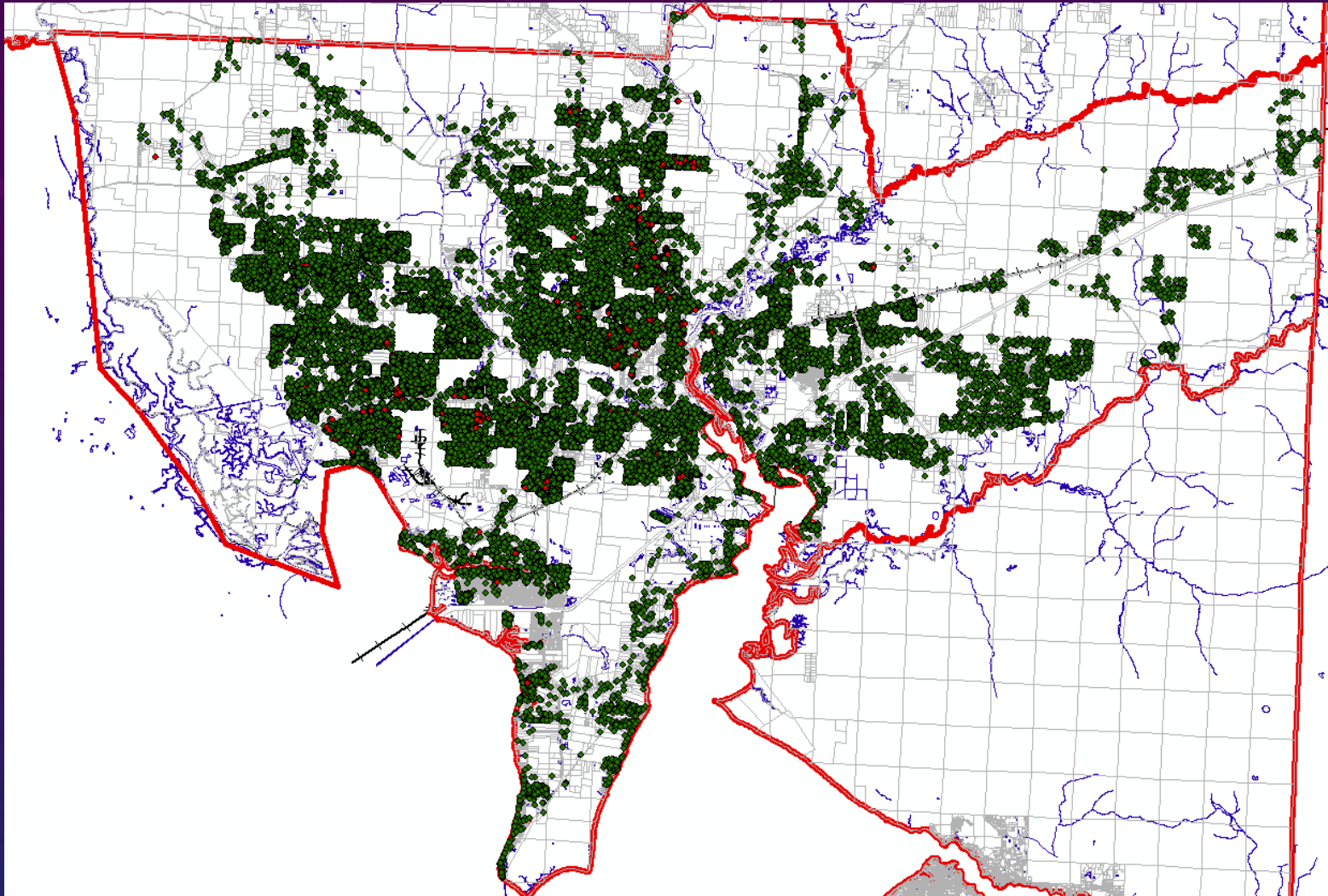




HIGH	CAPACITY	ENROLLMENT	% USE
Gulf Breeze	1,657	1,638	99%
Navarre	2,161	2,068	96%
ESA Total	3,818	3,706	97%

# SANTA ROSA COUNTY SCHOOL DISTRICT HIGH ESA SOUTH ENROLLMENT PROJECTIONS





## ESA CENTRAL

Existing Dwelling Units: 27,019

Single Family: 24,381

Multi Family: 2,638

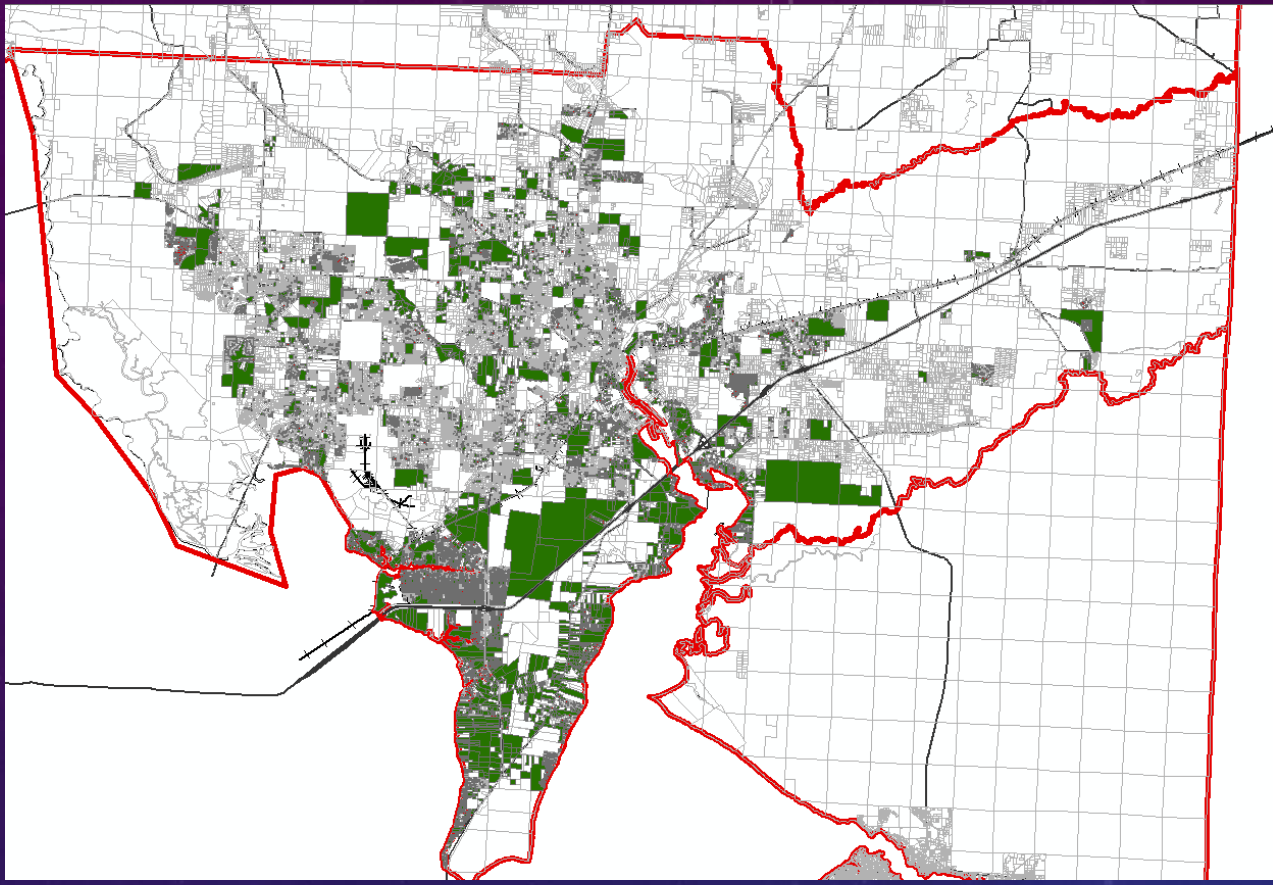
## STUDENTS RESIDING

Elementary: 7,569

Middle: 3,288

High: 4,071

Total: 14,928



## DEVELOPMENT POTENTIAL

Infill: 10,062

Developable SF: 47,783

Developable MF: 12,524

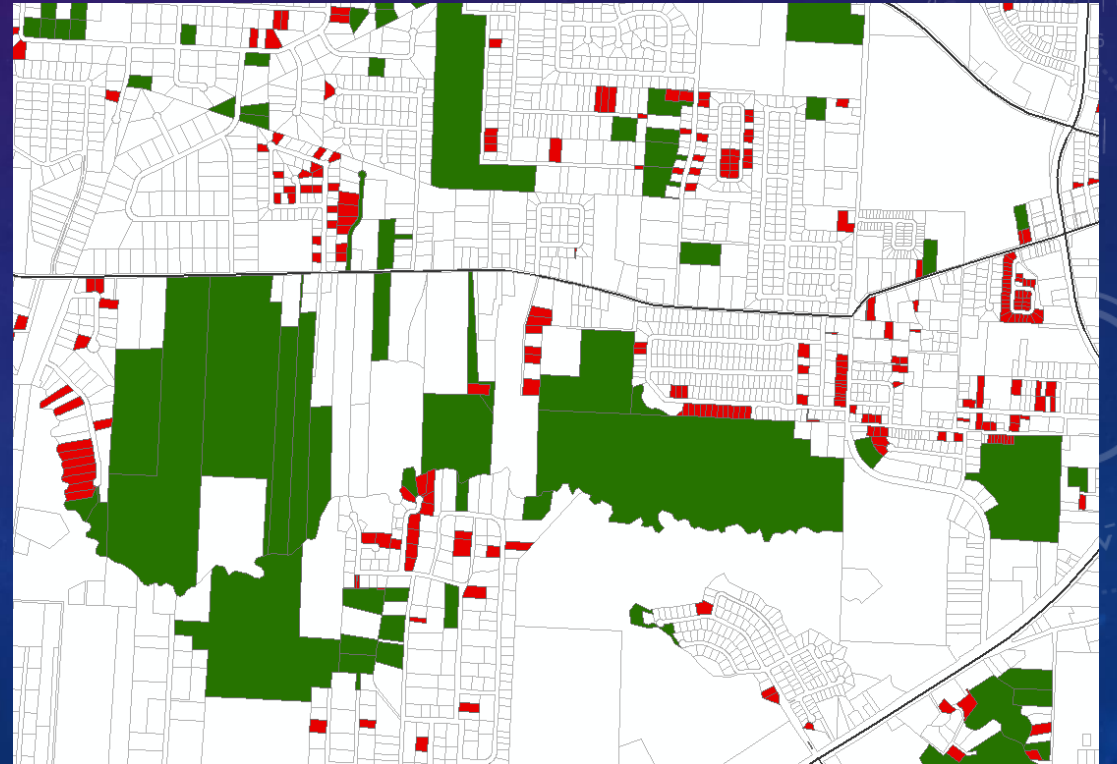
## STUDENTS @ MAX BUILDOUT

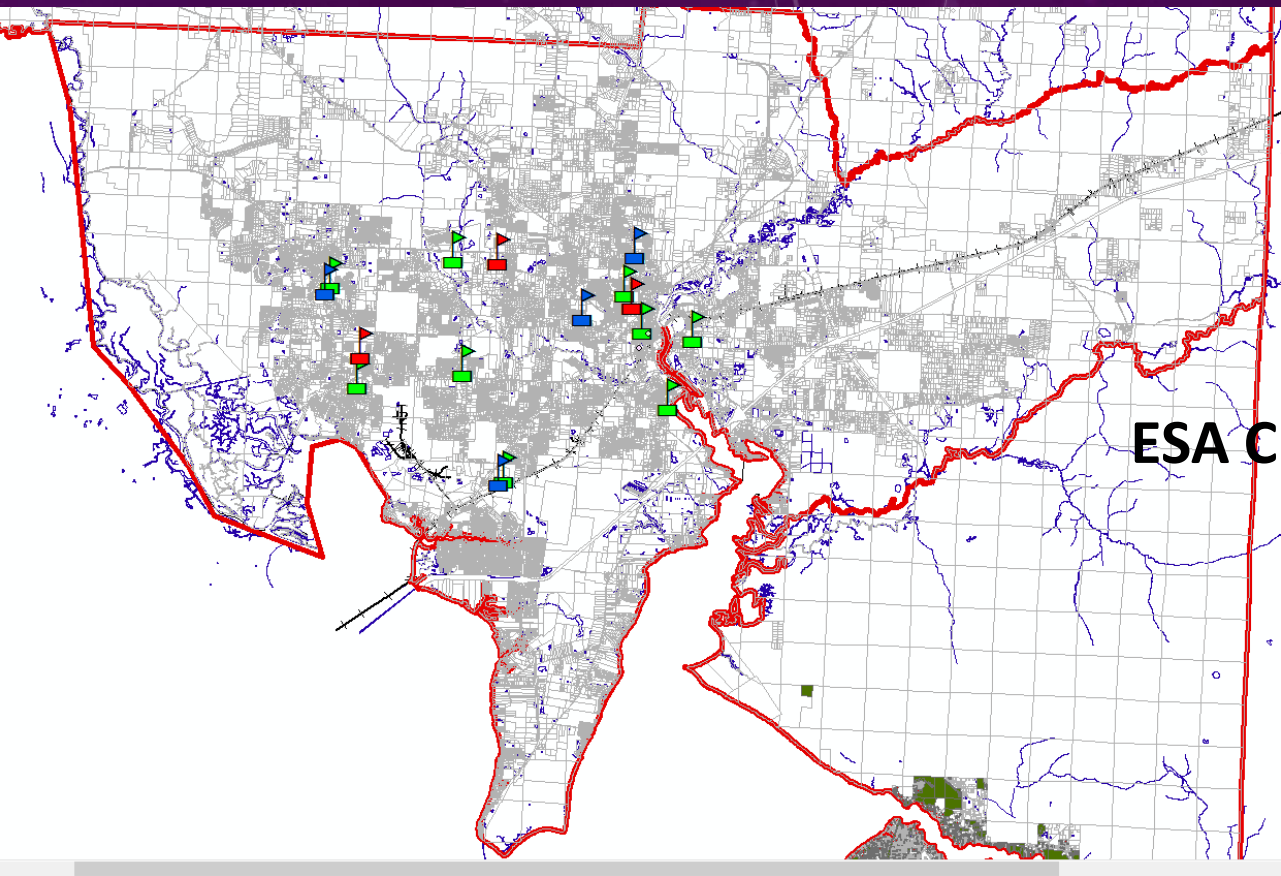
Elementary: 19,000

Middle: 9,000

High: 11,000

Total: 39,000

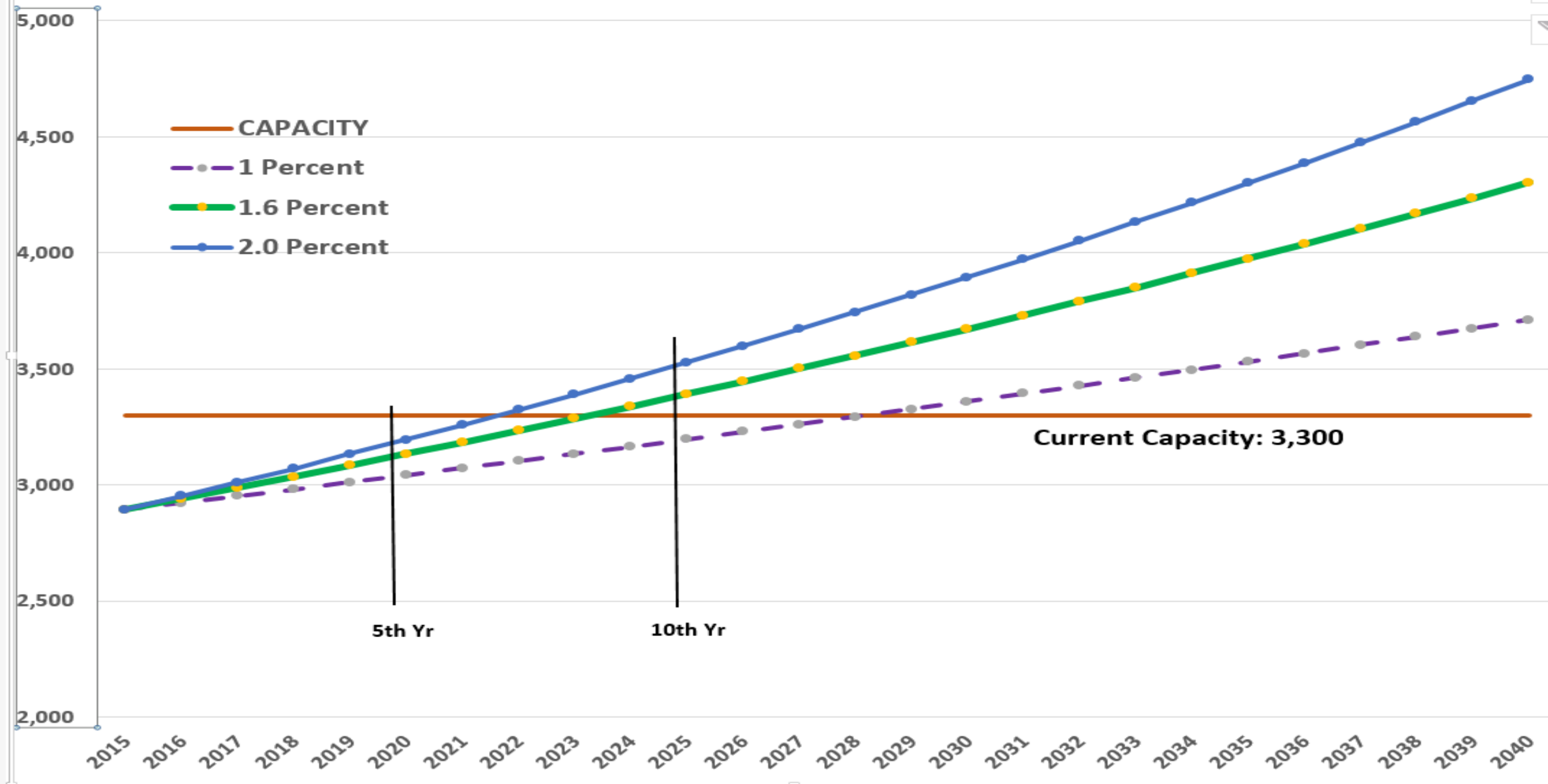




**ESA CENTRAL**

	CAPACITY	ENROLLMENT	% USE
Elementary	7,569	6,025	80%
Middle	3,289	2,914	89%
High	4,073	3,676	90%
Total	14,930	12,615	84%

# SANTA ROSA COUNTY SCHOOL DISTRICT ESA CENTRAL MIDDLE ENROLMENT PROJECTIONS



# SANTA ROSA COUNTY SCHOOL DISTRICT ESA CENTRAL HIGH ENROLLMENT PROJECTION

