



Santa Rosa County District Schools in Partnership with Durham School Services



AGENDA

- SAFETY
- MEASURING UP
 - STAFFING
 - Q & A

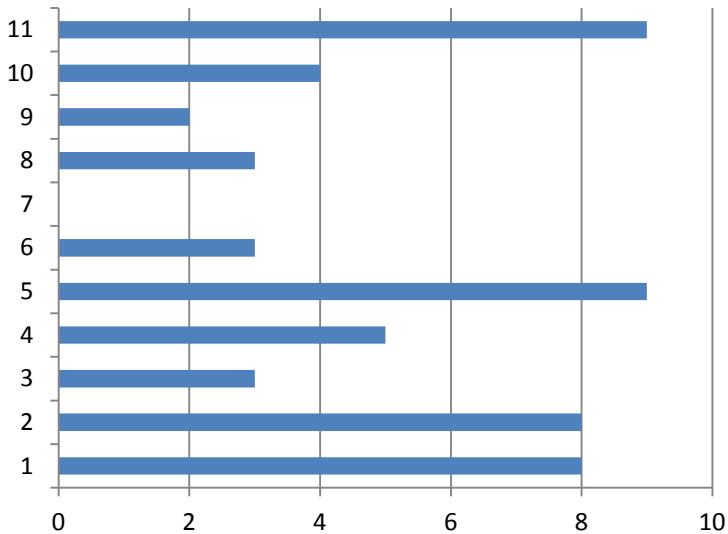


DURHAM'S MESSAGE TO PARENTS AND THE COMMUNITY:

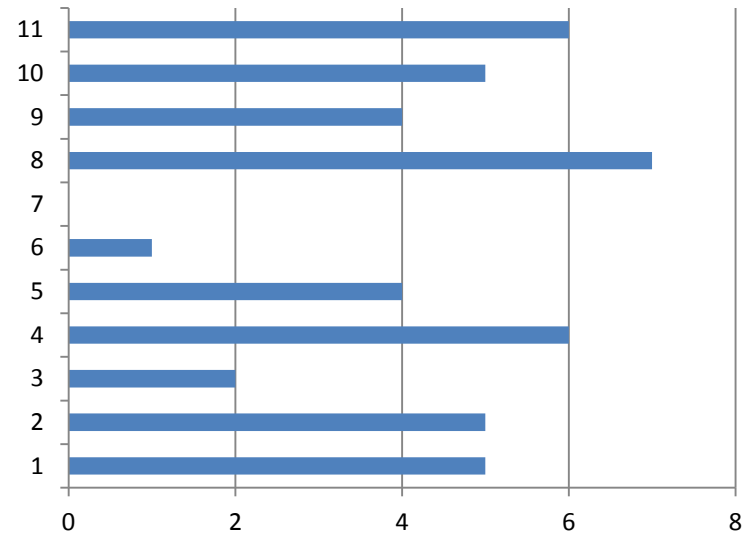
Durham's priority is getting your children to school safely, on time, and ready to learn.

BUS SAFETY

PREVENTABLE ACCIDENTS



Jan – Nov 2013: 54



Jan – Nov 2014: 45

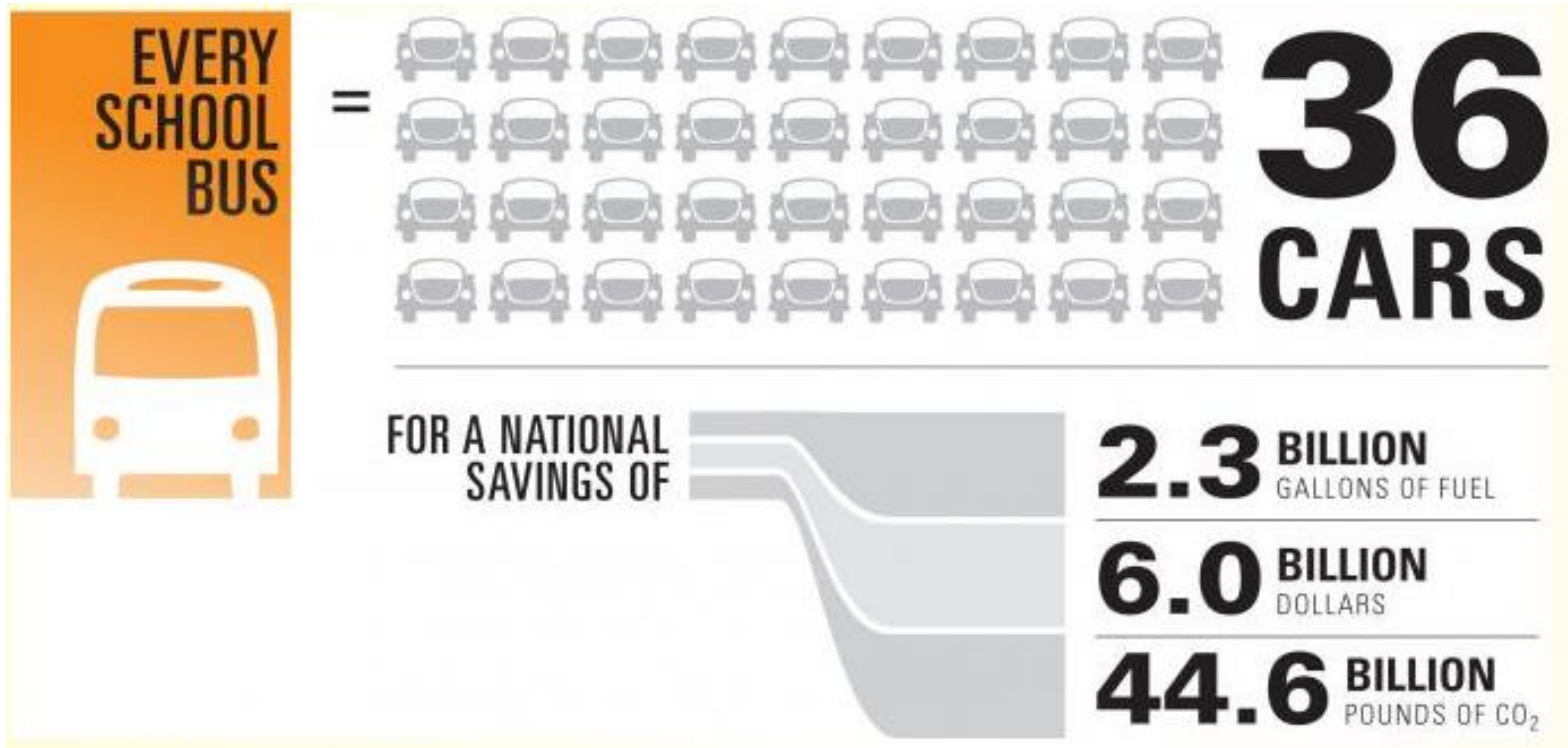
17% DECREASE IN PREVENTABLE ACCIDENTS

BUS SAFETY

HOW DO WE GET BETTER?

- Increased number of Trainers
 - 7 TO 11
- New Safety & Training Supervisor
- Advanced training at DOE
 - 4 Trainers to attend 3RD Party Evaluator course in Tallahassee in January
- Adjusted Behind the Wheel Training (BTW)

MEASURING UP



MEASURING UP

- The average school bus transports 54 student passengers, replacing approximately 36 family vehicles.
 - Santa Rosa School District's average is 34 student passengers, replacing approximately 22 family vehicles
- Approximately 55% of the 45,625,458 children enrolled in public K-12 schools were bused to school at public expense.
 - Santa Rosa School District buses approximately 73% (19,000) of the 26,000+ students

As much as 20 to 30% of morning traffic is generated
by parents driving their children to schools.

STAFFING

- 192 Routes
 - Required 211 Drivers (110%)
 - Authorized 230 Drivers (120%)

STAFFING

NOVEMBER 2014

- Milton/NE
 - Routes: 72
 - Drivers: 74
 - Required: 79 (94%)
 - Authorized: 86 (86%)
- Navarre/GB/SE
 - Routes: 71
 - Drivers: 79
 - Required: 78 (101%)
 - Authorized: 85 (93%)
- Pace
 - Routes: 49
 - Drivers: 52
 - Required: 54 (96%)
 - Authorized: 59 (88%)

REQUIRED: 211
97%

AUTHORIZED: 230
89%

AVAILABLE: 205

STAFFING

DECEMBER 2014

- | | | |
|------------------------|------------------------|------------------------|
| • Milton/NE | • Navarre/GB/SE | • Pace |
| – Routes: 72 | – Routes: 71 | – Routes: 49 |
| – Drivers: 79 | – Drivers: 84 | – Drivers: 55 |
| – Required: 79 (100%) | – Required: 78 (108%) | – Required: 54 (102%) |
| – Authorized: 86 (92%) | – Authorized: 85 (99%) | – Authorized: 59 (93%) |

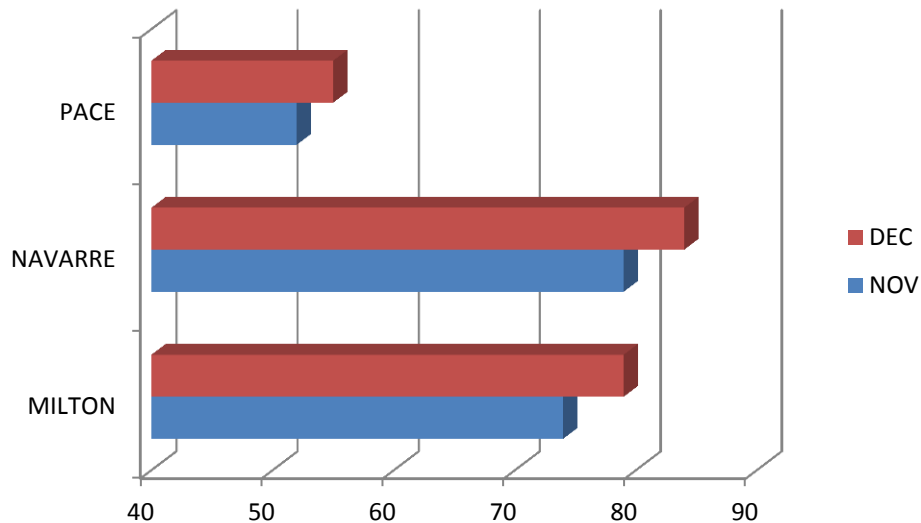
REQUIRED: 211
103%

AUTHORIZED: 230
95%

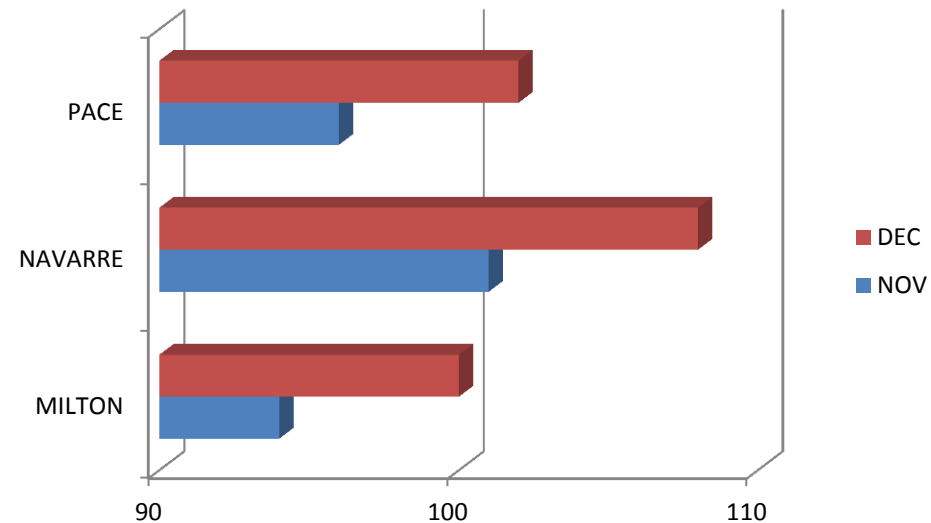
AVAILABLE: 218

STAFFING

AVAILABLE DRIVERS



PERCENT AUTHORIZED





Questions?

