

# KITCHEN EXPANSION FOR THE SANTA ROSA COUNTY SCHOOL BOARD

- PROPOSED KITCHEN  
EXPANSION

# S. S. Dixon Intermediate School

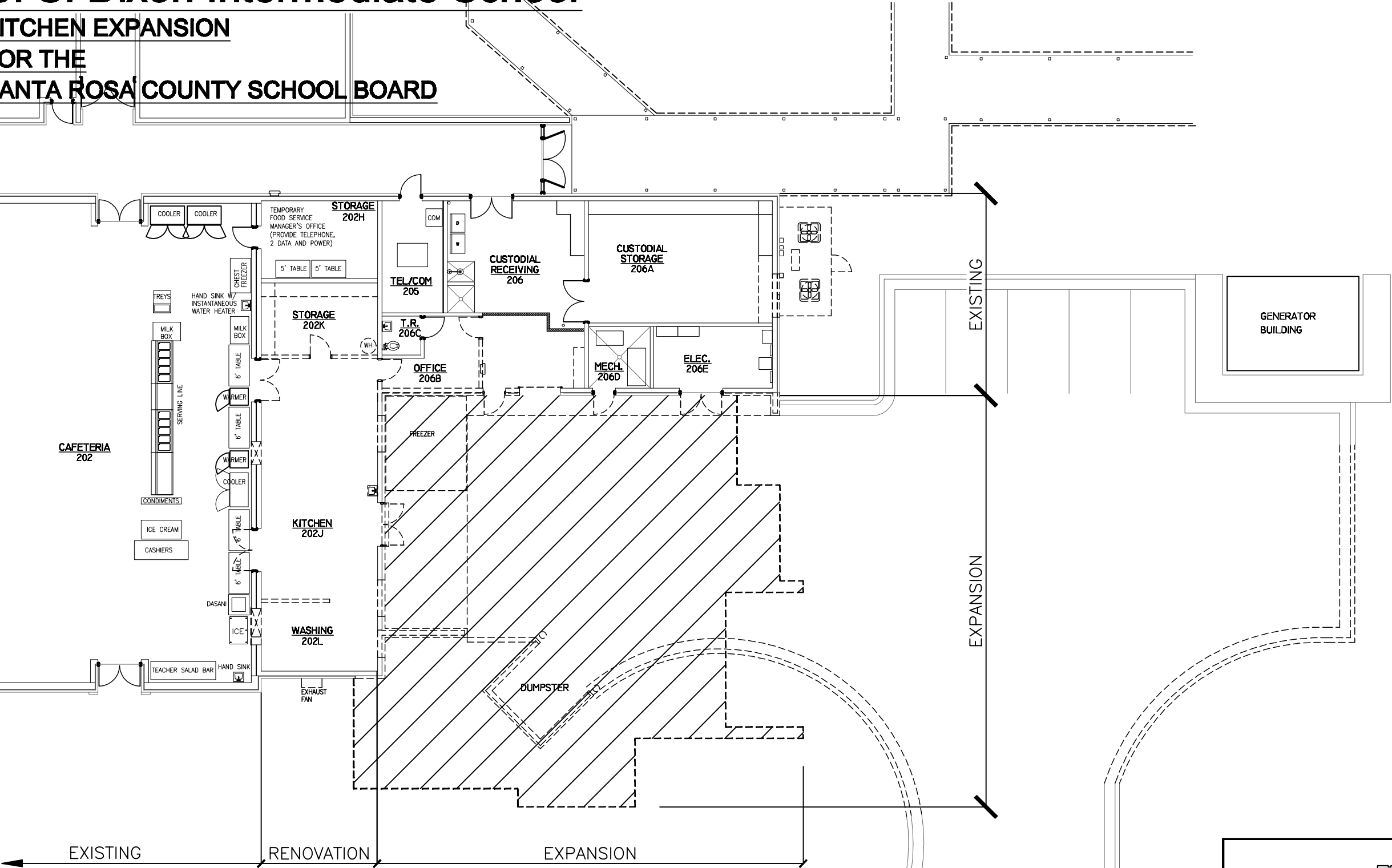
## KITCHEN EXPANSION FOR THE SANTA ROSA COUNTY SCHOOL BOARD



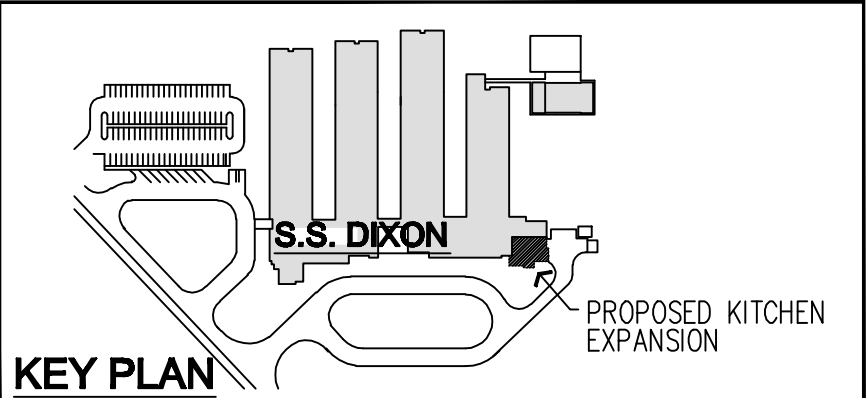
PMA  
architecture

PINDER-MARTIN  
ASSOCIATES, INC  
1001 N. 12th AVENUE  
PENSACOLA, FL 32501  
850-439-9110

AA26000896



### DECONSTRUCTION FLOOR PLAN / TEMPORARY SERVING LINE FLOOR PLAN



### KEY PLAN

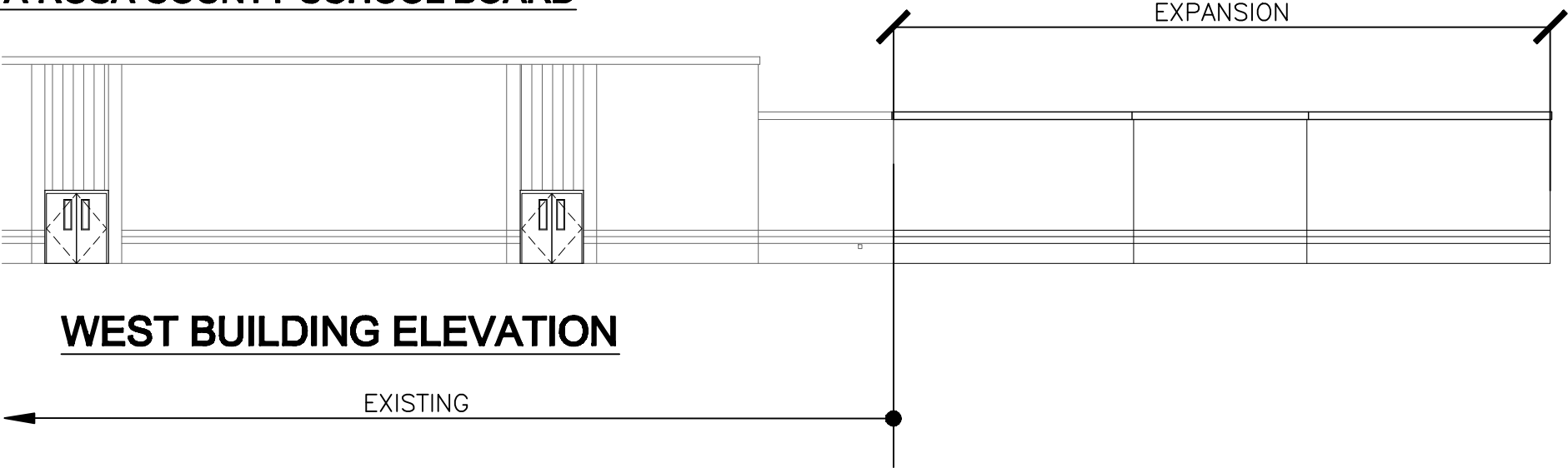
# S. S. Dixon Intermediate School

KITCHEN EXPANSION  
FOR THE  
SANTA ROSA COUNTY SCHOOL BOARD

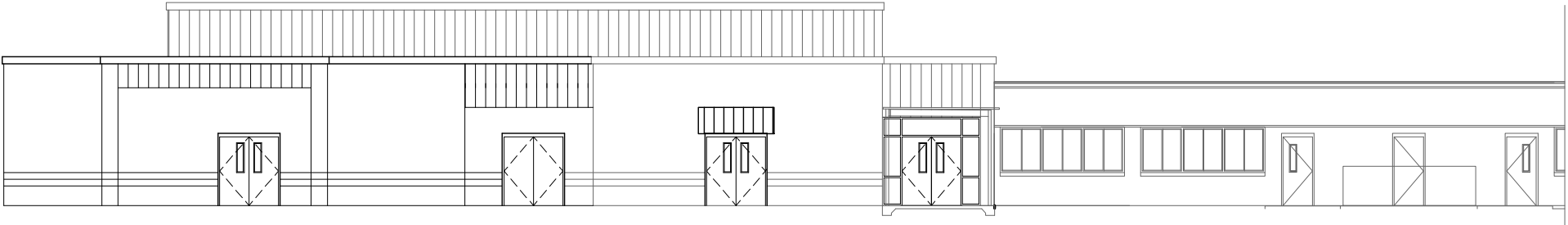


PINDER-MARTIN  
ASSOCIATES, INC  
1001 N. 12th AVENUE  
PENSACOLA, FL 32501  
850-439-9110

AA26000896



WEST BUILDING ELEVATION



SOUTH BUILDING ELEVATION

