

# Santa Rosa County School District

## *Quarterly Custodial Review*

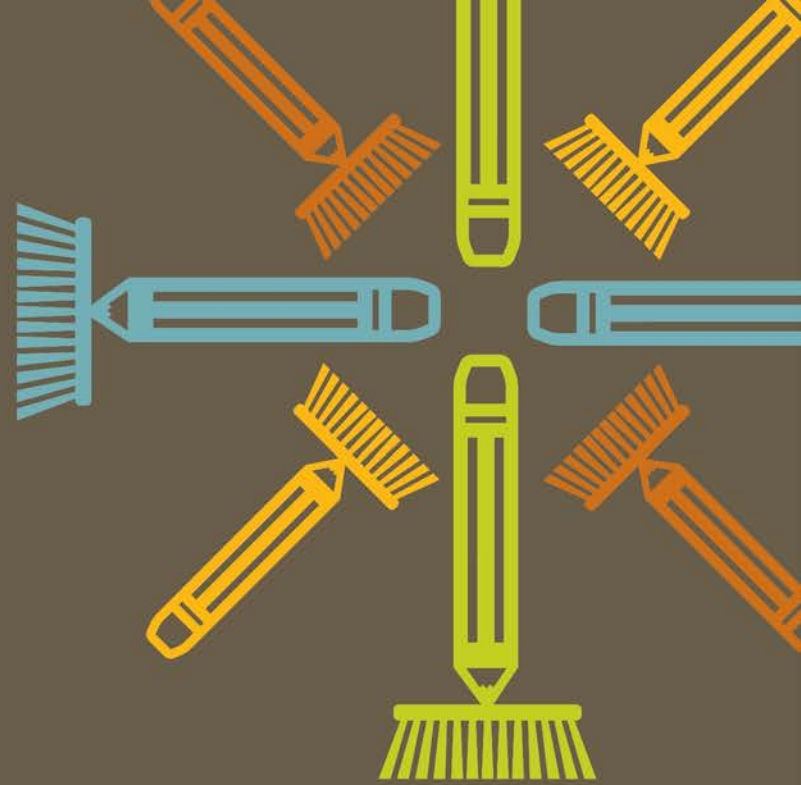
*February 21, 2013*



**SOUTHERN**  
— MANAGEMENT —

*keeping schools clean*





# Quality Control Scores

# Elementary & Intermediate Schools

| Santa Rosa County Schools   | Score |
|-----------------------------|-------|
| T R JACKSON                 | 3     |
| BAGDAD ELEM.                | 3     |
| BENNY RUSSELL ELEM          | 3     |
| BERRYHILL ELEM.             | 4     |
| CHUMUCKLA ELEM.             | 4     |
| DIXON PRIMARY               | 3     |
| DIXON INTERMEDIATE          | 3     |
| EAST MILTON ELEM.           | 3     |
| GULF BREEZE ELEM.           | 3     |
| JAY ELEM.                   | 3     |
| ORIOLE BEACH ELEM.          | 3     |
| PEA RIDGE ELEM.             | 3     |
| RHODES ELEM.                | 3     |
| HOLLEY-NAVARRE INTERMEDIATE | 4     |
| HOLLEY-NAVARRE PRIMARY      | 4     |
| WEST NAVARRE PRIMARY        | 3     |
| WEST NAVARRE INTERMEDIATE   | 3     |
|                             |       |

# Middle & Intermediate Schools

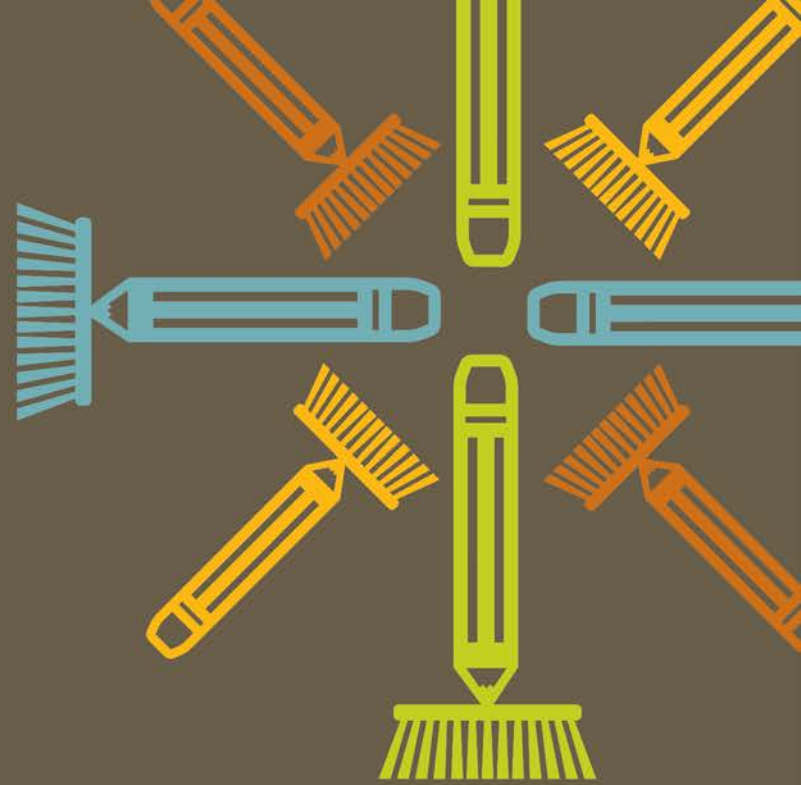
| Santa Rosa County Schools | Score |
|---------------------------|-------|
| AVALON MIDDLE             | 4     |
| GULF BREEZE MIDDLE        | 3     |
| HOBBS MIDDLE              | 4     |
| HOLLEY-NAVARRE MIDDLE     | 3     |
| KING MIDDLE               | 3     |
| SIMS MIDDLE               | 3     |
| WOODLAWN MIDDLE           | 3     |
|                           |       |

# High Schools

| Santa Rosa County Schools | Score |
|---------------------------|-------|
| GULF BREEZE HIGH          | 3     |
| JAY HIGH                  | 3     |
| MILTON HIGH               | 4     |
| NAVARRE HIGH              | 3     |
| PACE HIGH                 | 3     |
| CENTRAL SCHOOL            | 3     |
| LOCKLIN TECH              | 3     |
|                           |       |

# Admin & Support Services

| Santa Rosa County Sites | Score |
|-------------------------|-------|
| CANAL STREET ADMIN.     | 4     |
| SUPPORT SERVICES        | 3     |
| BERRYHILL ADMIN.        | 4     |
|                         |       |



# Five Year History Of Quality Control Scores

## INSPECTION RATING GUIDLINE

**1 = Unsatisfactory – Contract requirements are not being met as outlined in the specifications. Southern Management has not been responsive to the demands and needs of the school or building.**

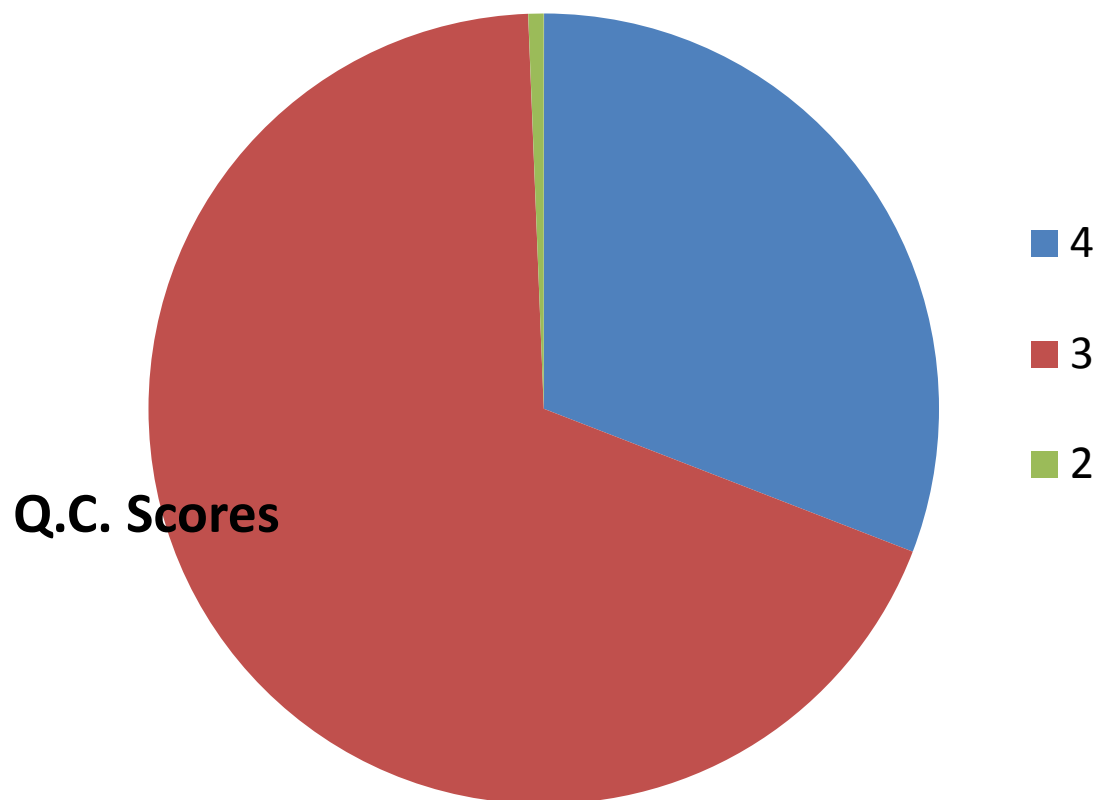
**2 = Needs Improvement – Contract requirements are being met below the acceptable standard as outlined in the specifications. Southern Management needs to improve on their performance in the school or building.**

**3 = Satisfactory – Contract requirements are being met as outlined in the specifications. Southern Management is doing an acceptable job in meeting the school or building needs and demands.**

**4 = Exceptional – Contract requirements are being met above and beyond the outline in the specifications. Southern Management is doing more than necessary to meet the needs and demands of the schools.**



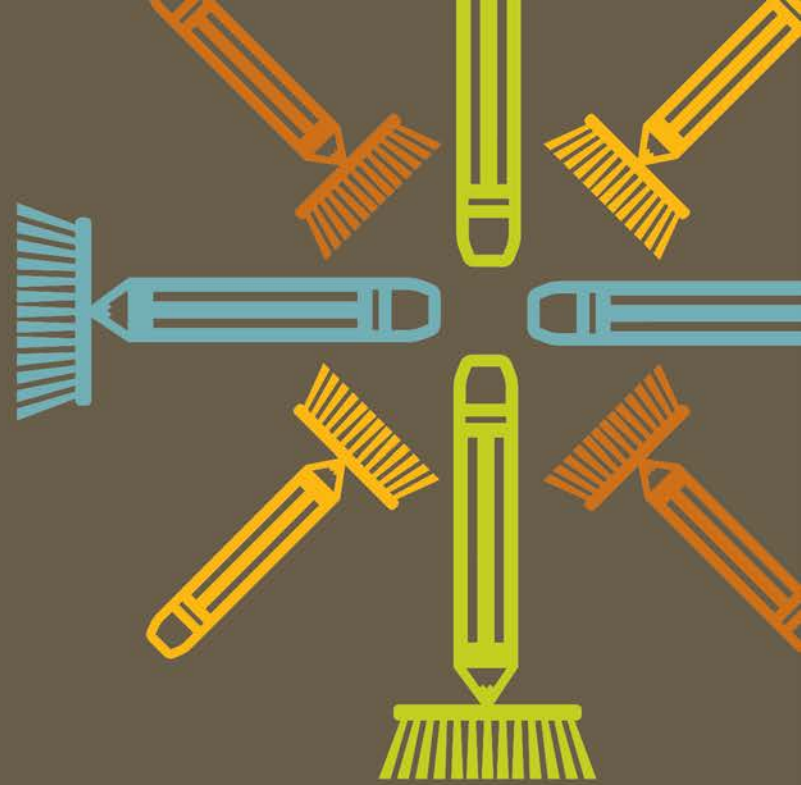
# LAST FIVE YEARS QUALITY CONTROL SCORES



680 FORMAL INSPECTIONS

# OVERALL AVERAGE QUALITY CONTROL SCORE FOR THE PAST FIVE YEARS

3.3



# Employee of the Quarter

# Employee of the Year!



**GROUNDS CREW**  
**Supervisor**  
**Amy Howard**

# Thank You

## Questions/Comments